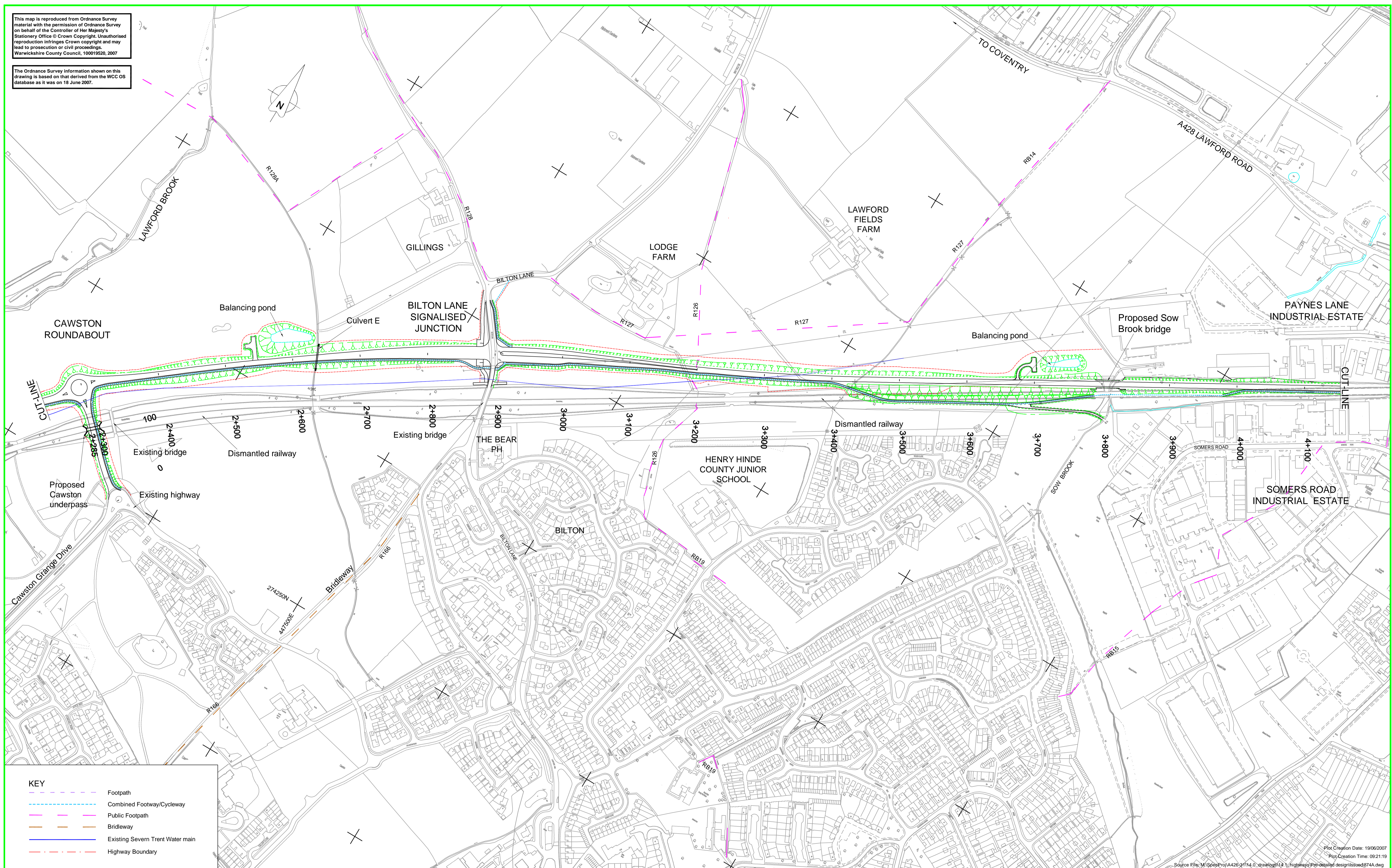


This map is reproduced from Ordnance Survey material with the permission of Ordnance Survey on behalf of the Controller of Her Majesty's Stationery Office © Crown Copyright. Unauthorised reproduction infringes Crown copyright and may lead to prosecution or civil proceedings. Warwickshire County Council, 100019520, 2007

The Ordnance Survey information shown on this drawing is based on that derived from the WCC OS database as it was on 18 June 2007.



KEY	
	Footpath
	Combined Footway/Cycleway
	Public Footpath
	Bridleway
	Existing Severn Trent Water main
	Highway Boundary

DEPARTMENT OF PLANNING, TRANSPORT & ECONOMIC STRATEGY

Warwickshire County Council

Design Services

Certificate No. FS 26655

NOTES

SUFFIX	AMENDMENTS	DATE	TITLE
A	OS background updated.	18/6/07	RUGBY WESTERN RELIEF ROAD SCHEME LAYOUT PLAN SHEET 2 OF 3

DRN	CKD
JPB	NS
DATE JANUARY 2007	
SCALE 1:2500 @ A1	
DRG. NO. H/A426-31/874A	

Plot Creation Date: 19/06/2007
 Plot Creation Time: 09:21:19
 Source File: M:\Spp\Proj\A426-31\14.0_drawings\14.1_highways\Pre-Detailed_design\soe\874A.dwg