

Warwickshire Community Safety Agreement 2010-11

Vision

Prior to the commencement of the 2008 - 11 Local Area Agreement, partners agreed a vision to form the basis of community safety work in Warwickshire:

‘Protecting our Communities Together.’

This vision was further endorsed at a Public Service Board Advisory Forum event in January 2009.

Within this overarching vision, the goal is to improve the quality of life for our citizens, preventing harm and reducing risk through proactive, targeted interventions. This is achieved by working in partnership and with the community to:

- reduce crime, anti-social behaviour and substance misuse
- create safer environments
- promote community cohesion
- raise community confidence and build resilience
- raise the aspirations of young people and vulnerable individuals.
- reduce death and injury on the roads

This document is the third countywide Community Safety Agreement for Warwickshire. The 2008-09 document provides a detailed explanation of how the 2008-11 Local Area Agreement (LAA) priority National Indicators were agreed.

Section One of this 2010-11 document details how the priorities for this year have been determined, with Section Two setting out actions to be undertaken to meet each of the priorities and establishing links to the three year LAA targets. All work to be undertaken will sit within the overarching vision above.

Section One

Towards a Community Safety Agreement for Warwickshire 2010-11

Background

Statutory Requirements

In August 2007 Regulation 2007 No. 1830 came into force amending the Crime and Disorder Act 1998. In two tier areas such as Warwickshire, there is now a requirement to have in place a county strategy group whose function shall be to prepare a community safety agreement for the county area on behalf of the responsible authorities for that area before the end of each year.

The county community safety agreement should:

- Identify ways of co-ordinating across the county to address priorities
- Identify how responsible authorities might otherwise contribute to reducing crime, disorder and substance misuse through closer joint working across the county

The community safety agreement is developed in parallel and aligned with the Community Safety Partnership (CSP) and Police Strategic Assessments. The countywide priorities on which this agreement is based have been developed using the key findings from the CSP and Police Strategic Assessments. This approach enables local, community priorities which have emerged through consultation and engagement to be fed up through the Strategic Assessments and into the countywide priority setting process.

Local Area Agreement National Indicators

The LAA in Warwickshire has targets for 35 indicators, selected locally from a menu of 198 available (plus 17 statutory targets on educational attainment and early years). Six of these indicators fall under the remit of the “Safer” Block and were established at a partnership event in early 2008, to align with the 2008-09 Community Safety priorities. The LAA is a three year agreement, with 2010-11 being the final year of the current priorities and targets.

The six Safer Block LAA indicators are:

- NI 15 - Most serious violent crime rate
- NI 16 - Serious acquisitive crime rate
- NI 21 - Dealing with local concerns about anti-social behaviour (ASB) and crime by the local council and police
- NI 30 - Re-offending rate of prolific and priority offenders (PPOs)
- NI 40 - Drug users in effective treatment
- NI 47 - People killed or seriously injured in road traffic accidents.

Targets have been set for these indicators, plus those deemed to be local ‘priority’ indicators, for 2010/11. These can be found at Appendix 1.

Current performance

Performance data is collected by the Warwickshire Observatory and is used to evaluate and manage performance in relation to the six Safer Block LAA targets listed above. Table 1 below shows performance against these targets in 2009-10.

Table 1 - Countywide performance 2009-10

Indicator	2008/09 Actual	2009/10 Target	2009/10 Actual	Performance vs same period 2008/09	Year end status against target
NI 15 - Most serious violent crime	306	294	323	+5.6% (red)	+9.9% (red)
NI16 – Serious acquisitive crime	7,964	7,582	6,937	-12.9% (green)	-8.5% (green)
NI21 – Dealing with local concerns about ASB and crime ¹	23%	26.3%	25%	+2% (green)	-1.3% (red)
NI30 - Re-offending rate of prolific and priority offenders	351	285	120 ²	-20.5% (green)	-31.6% (green)
NI40 - Drug users in effective treatment	1,111	1,063	1,127 ³	+5.9% (green)	+6.0% (green)
NI47 - People killed or seriously injured in road traffic accidents	348 ⁴	389	308 ⁵	-11.5% (green)	-20.8% (green)

¹ Annual measure, measured in 2009/10 through the Partnership Place Survey

² Figures for quarter 2 only - delay with data as this has to be received from national sources.

³ Figures to end of Nov 2009 - delay with the indicator caused by definition of 'effective treatment.'

⁴ All data for NI 47 is calendar year data

⁵ This is an actual end of year figure for 2009

Determining Priorities for 2010-11

Strategic Assessments were undertaken for each of the CSP areas within Warwickshire (based on the period August 2008 – July 2009). These were then considered by each CSP and used to formulate the following priorities for 2010-11.

North Warwickshire

High Risk Priorities	Key Themes
Violent Crime <i>(with a focus on domestic abuse, youth related violence and alcohol related violence)</i>	Alcohol – <i>links to domestic violence, youth related violence, youth related anti-social behaviour</i>
Anti-Social Behaviour <i>(with a focus on youth related anti-social behaviour, alcohol related anti-social behaviour and criminal damage to vehicles)</i>	Cross Border Prolific and other Priority Offenders (PPOs) – <i>links to serious acquisitive crime</i>
Serious Acquisitive Crime <i>(with a focus on domestic burglary and theft from vehicles)</i>	
Public Perceptions and Public Confidence <i>(with a focus on the perceptions of all crime and disorder)</i>	

North Warwickshire CSP supports the following work, coordinated at a County level:

- Road Safety (Warwickshire Casualty Reduction Partnership)
- Business Crime (Beating Business Crime Team)
- Community Cohesion (with a focus on Counter Terrorism)

Nuneaton and Bedworth

Partnership Priorities
Preventing youth offending
Drugs and Alcohol
Community Confidence
Road Safety
Violence
Serious Acquisitive Crime
Anti Social Behaviour
Organised Crime Groups

Rugby

Partnership Priorities
Violent Crime, with a specific focus on: <ul style="list-style-type: none">• Domestic Abuse• Most Serious Violence• Alcohol-Related Violence
Domestic Burglary and Theft from Motor Vehicle
Anti-Social Behaviour, with a specific focus on tackling Youth Related Anti-Social Behaviour incidents and improving Public Perceptions
Counter Terrorism
Road Safety

South Warwickshire

Partnership Priorities
Serious Violent Crime
Anti-Social Behaviour
Serious Acquisitive Crime
Road Safety with particular emphasis on controlling the speed of vehicles in residential areas

Warwickshire Police

Warwickshire Police have also undertaken a Strategic Assessment, from which the following priorities are proposed:

ACCOUNTABILITY		
"RAISING THE BAR" & "NARROWING THE GAP"		
DEATH/INJURY	ALL HARMS	
COUNTER-TERRORISM & DOMESTIC EXTREMISM DOMESTIC ABUSE ALCOHOL/DRUG RELATED VIOLENT CRIME ROAD RELATED DEATH	PRIORITY AREAS [WITHIN RUGBY, NUNEATON & LEAMINGTON]	ORGANISED CRIME COMMUNITY COHESION
TACKLING HARM CAUSERS		
PUBLIC CONFIDENCE		

Warwickshire Priorities 2010-11

Taking into account information provided through the CSP and Police Strategic Assessments and the 2008-11 LAA targets, the following priorities have been agreed for Warwickshire in 2010-11.

High Risk Issues

- Violent Crime, with a specific focus on Domestic Abuse and alcohol related violence (1)
- Road Safety (2)
- Anti-Social Behaviour, with a specific focus on tackling youth related incidents (3)
- Public confidence and perceptions (of all types of crime and disorder) (4)
- Serious Acquisitive Crime, with a specific focus on domestic burglary and theft from vehicles (5)
- Community Cohesion, including preventing violent extremism (6)

Cross Cutting Themes

- Alcohol
- Drugs
- Reducing Re-Offending

The risk harm matrix model used to prioritise the high risk issues is shown below. Further information on the use of the matrix is available on request.

Crime Type	Probability Score	Level of Harm Score	Overall Risk Score	Risk to Partnership
Violent Crime	16	24	384	HIGH
Road Safety	16	21	336	HIGH
Anti-Social Behaviour	16	18	288	HIGH
Community Confidence*	18	16	288	HIGH
Serious Acquisitive Crime (inc domestic burglary, vehicle crime and robbery)	16	12	192	MEDIUM

Please note that it is not possible to score Community Cohesion using this matrix as it is a wide ranging issue, with no single quantifiable measure of success. It would be hard to justify Community Cohesion as a higher priority for the Safer Block than any of the other high risk issues.

Work to be undertaken to meet these countywide priorities at a local level will be included within the individual CSP Partnership Plans whilst elements that can be most effectively implemented on a countywide basis are detailed in Section Two of the Community Safety Agreement.

Table 2 below shows the links between the countywide priorities, CSP priorities and national drivers from the National Community Safety Plan 2008-11.

Table 2 - Linking Local, County and National Drivers

High risk issues	Local (CSP) Priorities	Countywide Priorities		National Community Safety Plan 2008-11
		County	Police	
Violent Crime	Yes	Yes	Yes	Reduce the most serious violence
Road Safety	Yes (some escalate to county level)	Yes	Yes	No, but this priority sits within 'Tomorrow's Roads: Safer for Everyone' – the government's road safety strategy and casualty reduction targets for 2010
ASB	Yes	Yes	Not specifically, although focus on all harms in priority areas	Tackle the crime, disorder and anti-social behaviour issues of greatest importance in each locality
Public confidence and perceptions	Yes	Yes	Yes	Tackle the crime, disorder and anti-social behaviour issues of greatest importance in each locality
Serious Acquisitive Crime	Yes	Yes	Not specifically, although focus on all harms in priority areas	Continue to make progress on serious acquisitive crime
Community Cohesion	Yes (some escalate to a county level)	Yes	Yes	Reduce the risk to the UK and its interests overseas from international terrorism

Section Two

The Warwickshire Community Safety Agreement

Having identified the countywide community safety priorities in section one, section two goes on to show the actions to be undertaken to tackle each of these priorities. It identifies the key areas where work will be required to enable Warwickshire to meet the targets set within the LAA, with more detail on the specific actions to be undertaken during 2010-11 provided in the strategies and action plans referred to under each priority and also the SCS / LAA Delivery Plan. Only work to be undertaken or co-ordinated at a county level can be found within this agreement. Work to be undertaken at a more local level (including but not restricted to ASB, where partners have agreed that the lead should sit at a District / Borough level), can be found within the CSP Partnership Plans.

Principles

Work undertaken to meet all priorities will be underpinned by the following principles, as well as the overarching vision of 'protecting our communities together' outlined at the beginning of this Agreement:

- Our focus will be on the prevention of harm to the community, and on the causes or risk factors which impact upon it including crime, disorder and anti-social behaviour
- We are committed to working in partnership, both internally and with external agencies and the voluntary and business sectors to deliver our community safety priorities
- Our activities will be intelligence led and informed by sound analysis and information will be shared appropriately with internal and external partners
- We will focus on areas where we can have most impact and contribute to 'narrowing the gaps' between our most disadvantaged communities and the rest of the county.

Performance Management

Overall performance management of the Safer Communities Block of the LAA will take place through the monitoring of the Delivery Plan by both the Warwickshire Safer Communities Partnership (WSCP) and the Warwickshire Public Service Board (PSB). A chart showing the Safer Block governance structure can be found at Appendix 2, although please note that this is likely to be amended during the course of 2010-11 following a governance review which has recommended a merger of the Safer and Stronger Blocks of the LAA.

Quarterly reporting on progress against the headline national indicators will be to WSCP, and then to the PSB, with an annual report at year-end.

Monthly reports on performance will be produced and discussed by practitioners via a timely partnership conference call. This will enable remedial actions to be implemented to address drops in performance, especially in priority areas

Resourcing

The resources required to meet the priorities within this agreement will be contributed by all partners, mainly through the targeted use of existing resources.

Whilst it is not possible to identify the exact level of resourcing contributed around the county, the table below provides an idea of the significant sums invested by countywide agencies to meet community safety priorities. This table only refers to the resources of countywide agencies and it is worth noting that further significant contributions are also made by a range of partners at a more local level.

Agency	Budget	Amount
Warwickshire Police	Net revenue budget	£95,069,000
	including:	
	Community Protection	£1,123,100
	Special Constabulary	£44,300
	PCSOs	£685,700
Warwickshire County Council	Community Safety	£589,911
	Domestic Abuse	
	Core budget	£217,897
	Supporting People funding	£458,205
	Children's Services funding	£123,000
	Trading Standards (<i>estimated</i> from a range of budgets, in particular underage sales and rogue trading)	~£350,000

	Road Safety Controllable Revenue Budget Capital – Casualty Reduction Schemes Capital – Safety Cameras	~£400,000 £620,000 £350,000
	Youth Justice Service (budget from a number of sources including Youth Justice Board, Area Based Grant, Supporting People, Pooled Budget and core funding)	~ £2,666,801
Warwickshire Probation Trust	Total budget excluding YJS contribution: Managing offenders in custody and community Managing offenders in approved premises	£5,660,000 £1,121,000
Warwickshire Fire and Rescue Service	Budgets relating to all FRS community safety themes including domestic fires, arson and road safety.	£888,884
Drugs and Alcohol (funding from a range of agencies)	Managed by the DAAT on behalf of WSCP (Drugs)	~ £4,588,285
	Managed by the DAAT on behalf of WSCP (Alcohol)	~ £1,016,046
Partnership Funding Sources	Area Based Grant revenue (including the Road Safety Grant)	£2,138,355
	Basic Command Unit revenue	£283,750
	Safer and Stronger Communities Fund capital	£86,711

Whilst providing an idea of the significant resources available, the above table does not represent a comprehensive list of all countywide funding that is used to meet community safety priorities. A number of other agencies and Warwickshire County Council departments, for example the Observatory, Positive about Young People, the Youth Service, Parenting Service, Highways and Law and Governance, all contribute to this agenda, although the figures involved are harder to quantify.

Narrowing the Gaps

A central role for countywide agencies, specifically Warwickshire County Council and Warwickshire Police analysts, for each of the priorities below will be the identification of hotspot areas. This will ensure agencies can target resources towards locations that will enable them to have the greatest impact and 'narrow the gaps' within their area.

Differential Targets

All blocks of the LAA are moving towards Differential Targets, whereby geographically defined areas work towards a target that is specific to that area. Differential targets provide a clear focus on the threats, risks and harms facing Warwickshire, and enable issues to be highlighted and tackled effectively. Warwickshire Police has adopted this approach and identified three, long term Priority Policing Areas⁶ which were implemented in 2009/10 to run alongside their focus on High Harm Causers.

Scrutiny

Under the Police and Justice Act 2006, every local authority is required to have in place a committee with power to review and scrutinise, and make reports or recommendations, regarding the functioning of the responsible authorities that comprise a CSP. The Warwickshire Crime and Disorder Scrutiny Protocol was agreed in 2009 and sets out which elements of scrutiny will be undertaken at a County level, and which will sit at a District / Borough level. A table showing the agreed County and District / Borough areas of responsibility can be found at Appendix 3. This shows that responsibility for scrutinising WSCP and this agreement sit at a County level.

⁶ These are Rugby (Town, Brownsover, Benn, and New Bilton), Leamington Spa (Town, Clarendon, and some of Brunswick and Willes), and Nuneaton (Town, Abbey, Camphill, and parts of Bar Pool and Kingswood)

High Risk Issue 1 – Violent Crime, with a specific focus on Domestic Abuse and alcohol related violence

Links to targets within the Warwickshire LAA

NI 15: Most serious violent crime

Work undertaken at a county level to meet this priority during 2009/10

- Substantial piece of research into early intervention to prevent violence undertaken. Recommendations for multi-agency initiatives arising from this report approved by WSCP.
- Family Centred Intervention work implemented in Nuneaton and Bedworth and under development for Rugby and Warwick.
- Warwickshire Domestic Abuse Strategy 2008-11 now into its second year. Accompanying annual action plan for 2009/10 developed and implemented.
- Actions designed to reduce the harm caused by alcohol and drug misuse implemented (see Cross Cutting Themes 1 and 2: Alcohol and Drugs).

Key Areas of Countywide Business for 2010/11

- Implement Family Centred Intervention work in priority areas, utilising LPSA2 Reward Grant funding to work with up to 110 families
- Continue to implement Domestic Abuse Strategy 2008-11 through development and delivery of the 2010-11 action plan.
- Begin to deliver the outcomes of the domestic abuse strategic review, including consultation on the proposed service model, through monthly domestic abuse implementation group.
- Implement actions designed to reduce the harm caused by alcohol and drug misuse (see Cross Cutting Themes 1 and 2: Alcohol and Drugs)

Performance Management

Key Area of Business	Where can further information and targets be found?	How will this be monitored?
Family Centred Intervention work	Family Centred Intervention Project Plan	Through the Family Centred Intervention Steering Group, which reports into WSCP and the Children's Trust
Domestic abuse	Domestic abuse strategy and action plan for 2010/11	Annual reports to WCC Overview and Scrutiny Committee
Delivery of outcomes of domestic abuse strategic review	Domestic abuse implementation group	Through timely reports to WSCP
Alcohol and drug misuse	See cross cutting themes 1 and 2	See cross cutting themes 1 and 2

High Risk Issue 2 – Road Safety

Links to targets within the Warwickshire LAA

NI 47: People killed or seriously injured in road traffic accidents.

Work undertaken at a county level to meet this priority during 2009/10

The road safety objectives within the Local Transport Plan continue to be delivered. Key interventions during 2009/10⁷ included:

- Government's stretching targets for casualty reduction exceeded for 2009.
- Toolkit of measures designed for use with local communities to tackle excessive and inappropriate speed devised.
- Review of A and B road speed limits completed and implemented, making Warwickshire the first authority in the country to complete this review. 120 speed limits throughout the county changed as a result of the review.
- Criteria widened to offer more drivers detected speeding the opportunity to attend a Speed Awareness Workshop as an alternative to prosecution or fixed penalty.

Key Areas of Countywide Business for 2010/11

The key areas of countywide business are published on the Warwickshire Web as policies RS 1 to RS 25 of the Road Safety Strategy which forms part of the Local Transport Plan 2006/11; in particular:-

- Policy RS 1 which commits to meeting the Government's stretching targets for casualty reduction
- Policy RS 4 which commits to working in partnership.
- Policy RS 7 which commits to improving communications with local communities
- Policy RS 8 which commits to give priority to safety issues in disadvantaged areas
- Policy RS 19 which commits to combating excessive and inappropriate speed through an integrated programme of education, engineering and enforcement
- Policy RS 25 which commits to regular monitoring and evaluation

Performance Management

Key Area of Business	Where can further information and targets be found?	How will this be monitored?
Road Safety (that is casualty reduction)	Road Safety Strategy, which forms part of Warwickshire's Local Transport Plan 2006/11. Targets found in the WCC Corporate Business Plan, and as part of the Local Area Agreement	Progress monitored by Department for Transport. Through WCC Overview and Scrutiny Committee and WSCP

⁷ The range of road safety activities is too wide to cover in full in this agreement. A report on progress in delivering the road safety objectives of the Local Transport Plan is published on the Warwickshire Web. The document is entitled 'Warwickshire LTP2 Progress Report 2008/09' and is available via <http://www.warwickshire.gov.uk/ltp> (the section on road safety starts on p7).

High Risk Issue 3 - Anti-Social Behaviour, with a specific focus on tackling youth related incidents

Links to targets within the Warwickshire LAA

NI 21: Dealing with local concerns about anti-social behaviour and crime by the local council and police

Work undertaken at a county level to meet this priority during 2009/10

- Warwickshire ASB strategy now into its second year. Accompanying annual action plan for 2009/10 developed and implemented.
- Anti Social Fire Intervention Team (ASFIT) continued to support the reduction of small arson fires and associated ASB in high risk areas.
- Safer Schools programme implemented and further developed. Thirteen PCSOs now linked to priority schools around the county.
- Work undertaken with young people aged 8-13 at risk of engaging in anti-social or criminal behaviour, alongside school holiday provision for all young people in this age range.

Key Areas of Countywide Business for 2010/11

- Develop and implement the countywide ASB action plan for 2010/11.
- Utilise funding secured through the Home Office to provide interventions within priority areas, training for practitioners and support to victims of ASB.
- Implement and deliver new Minimum Standards for ASB.
- Explore opportunities to mainstream ASFIT and develop a dedicated small fire team.
- Implement Positive Activities Intervention Programme and a full range of diversionary activities targeted at vulnerable children and young people.

Performance Management

Key Area of Business	Where can further information and targets be found?	How will this be monitored?
Anti-social behaviour action plan	Anti-social behaviour strategy and action plan	Annual reports to WCC Overview and Scrutiny Committee
ASB funding and minimum standards	ASB working group papers	Through the ASB working group
Arson reduction	Arson reduction strategy and operational guidance	Fire and Community Safety Strategic Group
Positive Activities Intervention Programme	Targeted Youth Support Action Plan	Reports to a number of partnership and WCC meetings.

High Risk Issue 4 - Public confidence and perceptions (of all types of crime and disorder)

Links to targets within the Warwickshire LAA

NI 21: Dealing with local concerns about anti-social behaviour and crime by the local council and police

Also: This priority has strong links to the single confidence measure for Police Forces, asking residents the extent to which they agree that the police and local council are dealing with the ASB and crime issues that matter in their area.

Work undertaken at a county level to meet this priority during 2009/10

- Partnership confidence strategy and action plan developed through multi-agency Task and Finish Group.
- Joint 'safe in' concept under which to badge all partnership work to improve confidence developed and agreed.
- Strong links with Neighbourhood Watch developed and maintained.
- Enforcement action undertaken against Rogue Traders and "Yee Ha" campaign launched to provide residents with information on staying safe from Cowboy Traders.
- 'Right Service, First Time' approach for handling incidents implemented.

Key Areas of Countywide Business for 2010/11

- Implement confidence strategy and action plan.
- Implement confidence communications and marketing plan, utilising 'safe in' theme to provide countywide consistency for messages whilst maintaining local flexibility.
- Roll out 'days of action' in priority locations around the county.
- Implement 'Your Town, Your Choice' projects in priority locations, utilising funding allocated from the LPSA2 Reward Grant
- Ensure good links with local Neighbourhood Watch groups and co-ordinators are maintained.

Performance Management

Key Area of Business	Where can further information and targets be found?	How will this be monitored?
Confidence strategy and action plan	Confidence strategy and action plan	Through the confidence Task and Finish Group, which reports to WSCP
Communications and marketing plan	Communications and marketing plan	
Days of action and Your Town, Your Choice	Confidence action plan	
Links to Neighbourhood Watch	Papers for local and countywide Neighbourhood Watch meetings	Papers for local and countywide Neighbourhood Watch meetings

High Risk Issue 5 - Serious Acquisitive Crime, with a specific focus on domestic burglary and theft from vehicles

Links to targets within the Warwickshire LAA

NI 16: Serious acquisitive crime

Work undertaken at a county level to meet this priority during 2009/10

- Projects and actions designed to reduce business crime undertaken through the Warwickshire Business Crime Unit. Business Crime Advisors completed 1,000 contacts with businesses.
- Development of Watch schemes for businesses continued. Alongside the main Business Watch scheme now sit the more specialised Shop Watch, Rural Watch, Pub Watch, Hotel Watch, Care Watch and Schools Watch.
- Home Security and Personal Safety Packs distributed to help vulnerable consumers reduce the risk of becoming victims of doorstep crime and distraction burglary.

Key Areas of Countywide Business for 2010/11

Much work undertaken to meet this priority is carried out at a local, CSP level.

At a countywide level:

- Continue to deliver projects and actions designed to reduce business crime through the Warwickshire Business Crime Unit, in particular:
 - Respond to concerns raised by business partner organisations
 - Undertake targeted work in areas that become business crime hot spots
- Undertake leaflet drops and publicity in priority areas to provide crime prevention messages and highlight the risks associated with leaving property insecure or on display.
- Contact all victims of domestic burglary, and visit all victims of distraction burglary, to provide appropriate advice and support.
- Undertake joint work designed to tackle doorstep crime and distraction burglary, including Rogue Traders.

Performance Management

Key Area of Business	Where can further information and targets be found?	How will this be monitored?
Business crime	Police Business Crime Unit Action Plan	Through Warwickshire Police Community Protection Team
Leaflet drops and publicity	Warwickshire Police Community Protection team	Co-ordinated by Warwickshire Police Community Protection team
Contact with burglary victims	Warwickshire Policing Plan	Through Warwickshire Police Community Protection Team
Doorstep crime and distraction burglary	Trading Standards Service Plan	Full year performance report annually to WCC Overview and Scrutiny Committee

High Risk Issue 6 - Community Cohesion, including preventing violent extremism

Links to targets within the Warwickshire LAA

NI 1: Percentage of people who believe people from different backgrounds get on well together in their local area (Stronger Block target)

Work undertaken at a county level to meet this priority during 2009/10

- Countywide action plan around the national Prevent strategy developed through new partnership working group.
- Schools plan to prevent violent extremism also developed and delivered.
- Funding secured through Migration Impact Fund for work to engage with gypsy and traveller communities. Staff now in place and projects in development.

Key Areas of Countywide Business for 2010/11

- Develop and implement a partnership community cohesion strategy and deliver, in partnership, key objectives from the Warwickshire Police Community Cohesion plan.
- Implement partnership Prevent action plan.
- Implement projects funded through Migrant Impact Fund to increase engagement with gypsy and traveller communities.

Performance Management

Key Area of Business	Where can further information and targets be found?	How will this be monitored?
Community Cohesion strategy and Police Cohesion plan	Community Cohesion strategy and Police plan	Strategy through the new Safer / Stronger Block 'Board' Plan through Warwickshire Police Community Protection Team
Prevent action plan	Prevent action plan	Through partnership Prevent working group
Migration Impact Fund	Currently within Stronger Communities action plan	Through new Safer / Stronger Block 'Board'

Cross Cutting Theme 1 – Alcohol

Links to targets within the Warwickshire LAA

N/A, but NI 39 measures rate of hospital admissions per 100,000 for alcohol related harm

Work undertaken at a county level to meet this priority during 2009/10

- Specific alcohol reference included within Healthier Communities and Older People Block Health Inequalities Strategy.
- Capacity of alcohol treatment system increased, with numbers treated increasing by 19% (April – Sept figures).
- Alcohol and Domestic Abuse service extended to provide countywide coverage.
- Investment made by NHS Warwickshire into drug and alcohol services confirmed, enabling commissioners to take forward discussions relating to Pooled Budgets.
- Test purchasing campaigns undertaken around the county and appropriate action taken against retailers found selling alcohol to underage young people.
- Target for completion of Community Sentences with Alcohol Treatment Requirements exceeded.

Key Areas of Countywide Business for 2010/11

- Develop 2010-11 alcohol implementation plan which reflects inclusion of alcohol in the Health Inequalities Strategy.
- Take appropriate action to improve community and in-patient alcohol services through the designated commissioning process.
- Tackle sales to children of alcohol and other intoxicating substances, utilising the full range of available campaigning methods and enforcement tools.
- Deliver Community Sentences with appropriate links to reduction of alcohol misuse.

Performance Management

Key Area of Business	Where can further information and targets be found?	How will this be monitored?
Strategy and implementation plan	Strategy for Reducing Alcohol Related Harm and alcohol implementation plan	Quarterly reports to Drug and Alcohol Management Group (DAMG). Issues escalated to WSCP where required.
Commissioning process	Updates reports to DAMG	Quarterly reports to DAMG. Issues escalated to WSCP where required.
Underage sales	Trading Standards Service Plan	Full year performance report annually to WCC Overview and Scrutiny Committee
Community Sentences	Warwickshire Probation Strategic Plan and Business Plan 2010-11	Progress monitored through Probation Service

Cross Cutting Theme 2 – Drugs

Links to targets within the Warwickshire LAA

NI 40: Drug users in effective treatment

Work undertaken at a county level to meet this priority during 2009/10

- Performance against drug users in effective treatment target remained robust, with 2009/10 target being met by August 2009.
- 2009/10 drug treatment plan developed and implemented.
- Investment made by NHS Warwickshire into drug and alcohol services confirmed, enabling commissioners to take forward discussions relating to Pooled Budgets.
- Target for completion of Community Sentences with Drug Rehabilitation Requirements met.

Key Areas of Countywide Business for 2010/11

- Develop and implement 2010-11 drug treatment plan.
- Take appropriate action to continue the development of community and in-patient drug services through the designated commissioning process.
- Deliver Community Sentences with appropriate links to reduction of drug misuse.

Performance Management

Key Area of Business	Where can further information and targets be found?	How will this be monitored?
Strategy and treatment plan	Strategy for Reducing Drug Related Harm and drug treatment plan	Quarterly reports to Drug and Alcohol Management Group (DAMG). Issues escalated to WSCP where required.
Commissioning process	Updates reports to DAMG	Quarterly reports to DAMG. Issues escalated to WSCP where required.
Community Sentences	Warwickshire Probation Strategic Plan and Business Plan 2010-11	Progress monitored through Probation Service

Cross Cutting Theme 3 - Reducing Re-Offending

Links to targets within the Warwickshire LAA

NI 30: Re-offending rate of prolific and priority offenders

Work undertaken at a county level to meet this priority during 2009/10

- 2009/10 Prolific and Priority Offender (PPO) annual plan developed and implemented.
- Manager employed with specific responsibility for cross border PPOs, significantly increasing information sharing with neighbouring areas.
- High Harm Causer scheme introduced to target 'critical few' who cause most harm to local communities.
- Youth Rehabilitation Order and Scaled Approach to Youth Justice implemented.
- New approach to 'deter' groups of PPOs implemented.

Key Areas of Countywide Business for 2010/11

- Develop and implement re-offending strategy, in line with new duty placed on CSPs / CSPs under Policing and Crime Act 2009.
- Develop and implement 2010/11 PPO annual plan.
- Refresh cohort of PPOs and implement revised matrix, to ensure scheme has maximum impact on crime in priority areas.

Performance Management

Key Area of Business	Where can further information and targets be found?	How will this be monitored?
Re-offending strategy	Re-offending strategy	Through timely update reports to WSCP.
PPO annual plan	PPO annual plan	Through PPO county Steering Group.
PPO cohort and matrix	PPO annual plan	Through PPO county Steering Group.

Appendix 1: 2010/11 LAA Targets

Indicator	Measure	2009/10 target	2010/11 target
NI 15 – Most serious violence	Smaller is better	294	288
NI 16 – Serious acquisitive crime	Smaller is better	7,582	7,195
NI 21 – Dealing with local concerns about ASB and crime	Bigger is better	26.3%	29.5%
NI 30 – Re-offending rate of PPOs	Bigger is better	19% reduction	To be confirmed
NI 40 – Drug users in effective treatment	Bigger is better	1,063	1,074
NI 47 – People killed or seriously injured in road traffic accidents ⁸	Smaller is better	389	385

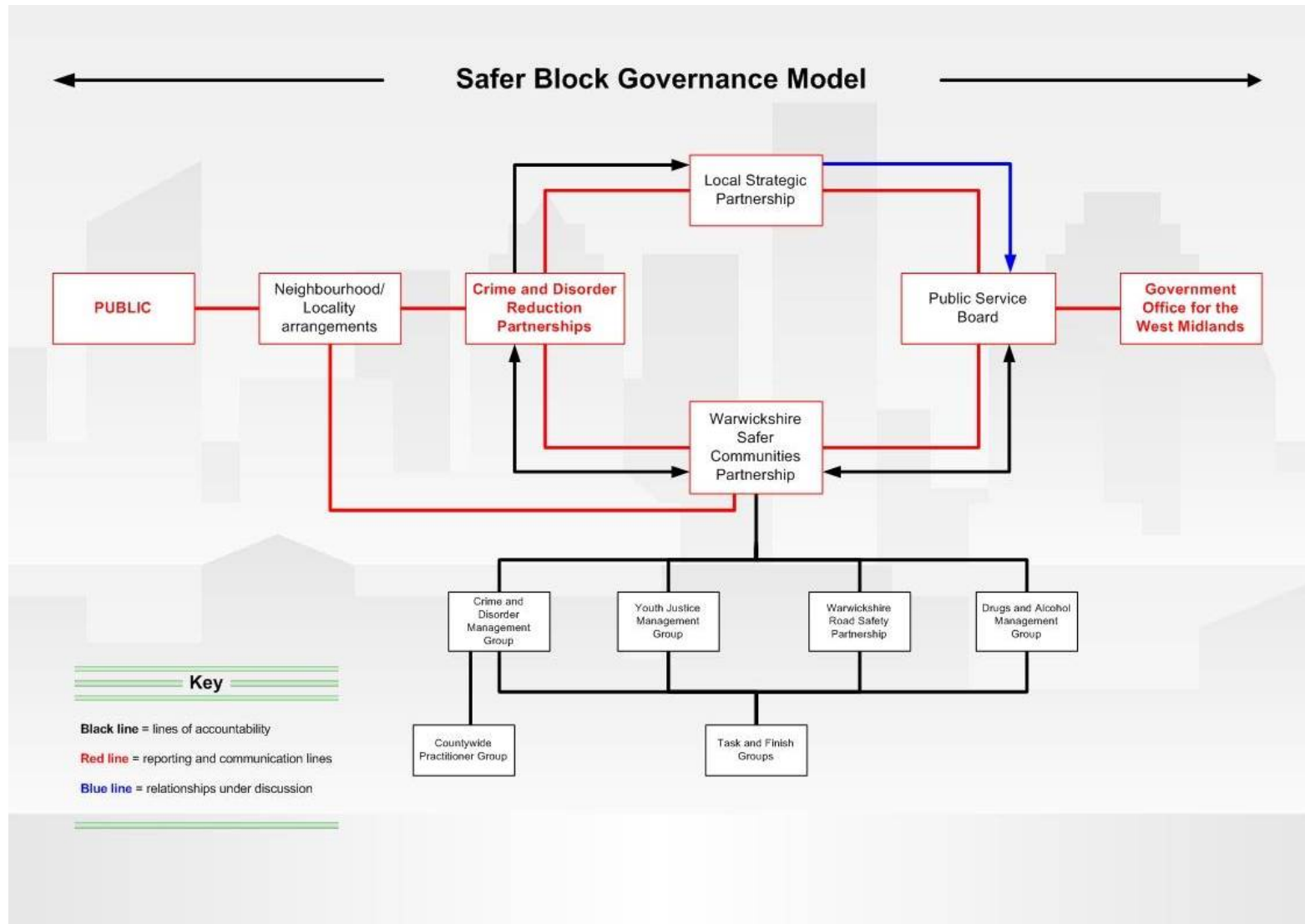
Local Priority Indicators

Indicator	Measure	Baseline period	Baseline	2010/11 target
NI 18 – Adult reoffending rate	Smaller is better	July 08 – June 09	+1.50%	-2%
NI 20 – Assault with injury crime rate	Smaller is better	2008/09	2,738	2,327
NI 47 – People killed or seriously injured in road traffic accidents (local stretch target) ⁹	Smaller is better	2009	308	304

⁸ Figures for 2009 calendar year.

⁹ Target for 2010 calendar year.

Appendix 2: Safer Block Governance Structure



Appendix 3: County and District/Borough areas of responsibility for crime and disorder overview and scrutiny:

County Scrutiny	District/Borough Scrutiny
<p>Scrutiny of the WSCP, including the community safety agreement, associated strategies and performance reports, etc.</p>	<p>Scrutiny of the local CSP, including its partnership plan and associated performance reports, etc.</p>
<p>Scrutiny of all activity relating to crime and disorder matters which is coordinated/ funded at county level, including:</p> <ul style="list-style-type: none"> ▪ Community safety activity (WCC Team) ▪ Domestic abuse strategy and commissioning ▪ Drug and alcohol strategy and commissioning ▪ Youth Offending Service ▪ Anti-social behaviour (County level strategy and actions) ▪ The contribution of several County level services, including: <ul style="list-style-type: none"> ○ Road Safety ○ Trading Standards ○ Warwickshire Fire & Rescue Service ▪ County strategy for community cohesion and counter terrorism ▪ Serious acquisitive crime initiatives, including the Business Crime Unit ▪ Safer neighbourhood strategy ▪ Safer Schools initiative ▪ Positive About Young People ▪ The contribution of the Probation Service ▪ The confidence agenda 	<p>Scrutiny of all activity relating to crime and disorder matters which is coordinated/ funded at district level, including:</p> <ul style="list-style-type: none"> ▪ Community Safety (District/Borough Teams) ▪ Anti-Social Behaviour (District level strategy implementation/ delivery) ▪ Community Warden Schemes ▪ The contribution of several District/Borough level services, including: <ul style="list-style-type: none"> ○ Environmental Services ○ Housing ○ Sports and Recreation ○ Licensing ▪ Specific projects established and managed at a district level e.g. domestic abuse, anti-social behaviour initiatives, acquisitive crime ▪ Local delivery of community cohesion and counter terrorism initiatives ▪ Safer neighbourhood delivery