

The Benefits for Biodiversity

Ecology Unit, Warwickshire
Museum Field Services

Museum Field Services

- Ecology
- Archaeology
- (Geology)

Archaeology

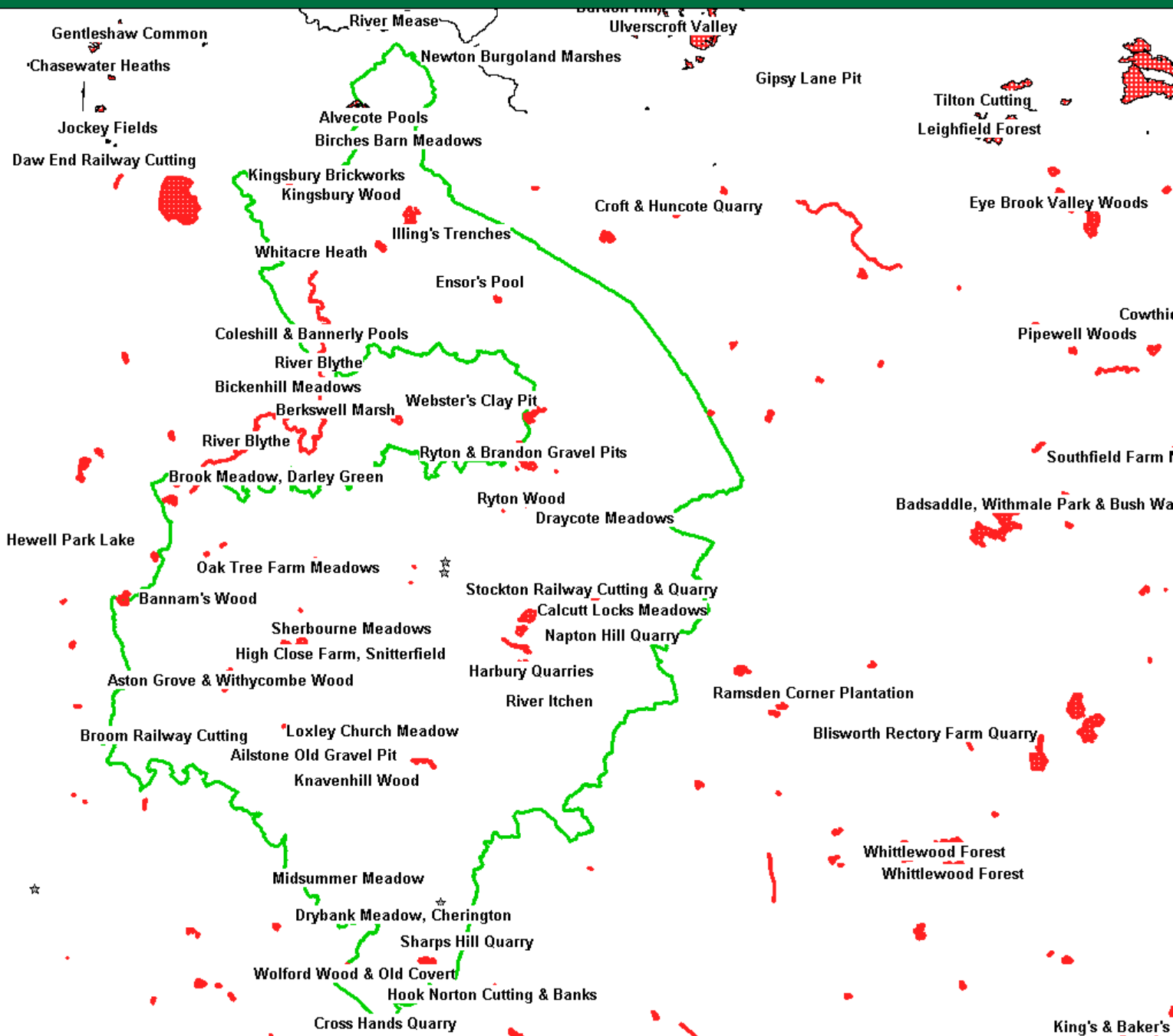
- Warwickshire's Aggregates areas are an important element of the historic environment.
- The Museum has recently begun an ALSF -funded assessment of the archaeology of Warwickshire's aggregates archaeology.
- The Museum is also engaged in another ALSF-funded project, which will produce a strategy for delivering an archaeological outreach programme for the aggregate-producing areas of Warwickshire.

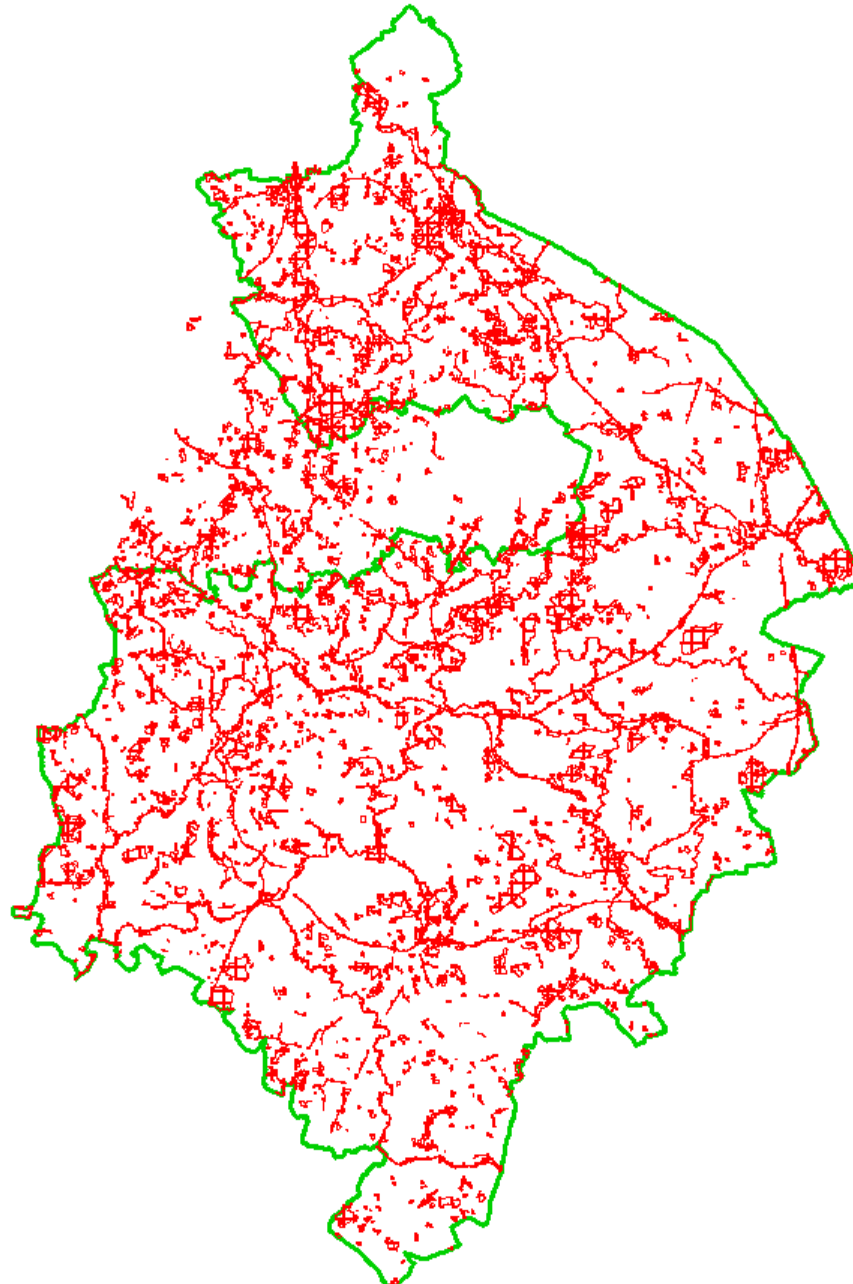
Ecology

- Where is it...
 - SSSIs
 - Local Sites (SINCs)
 - Generally (Habitat Biodiversity Audit, HBA)
 - Species ... everywhere

Adult, Health and Community Services

SSSIs

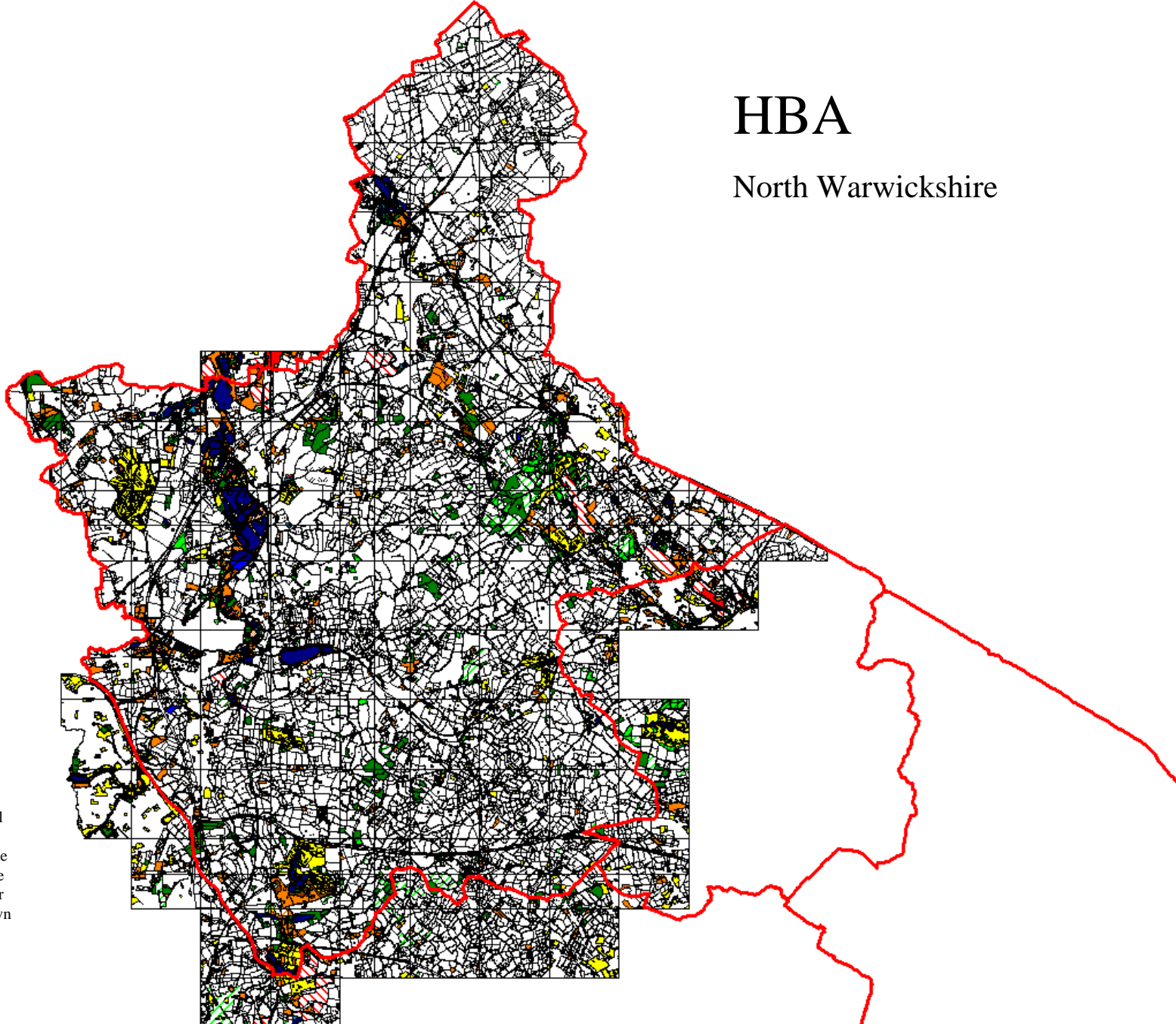




Potential
SINC_s

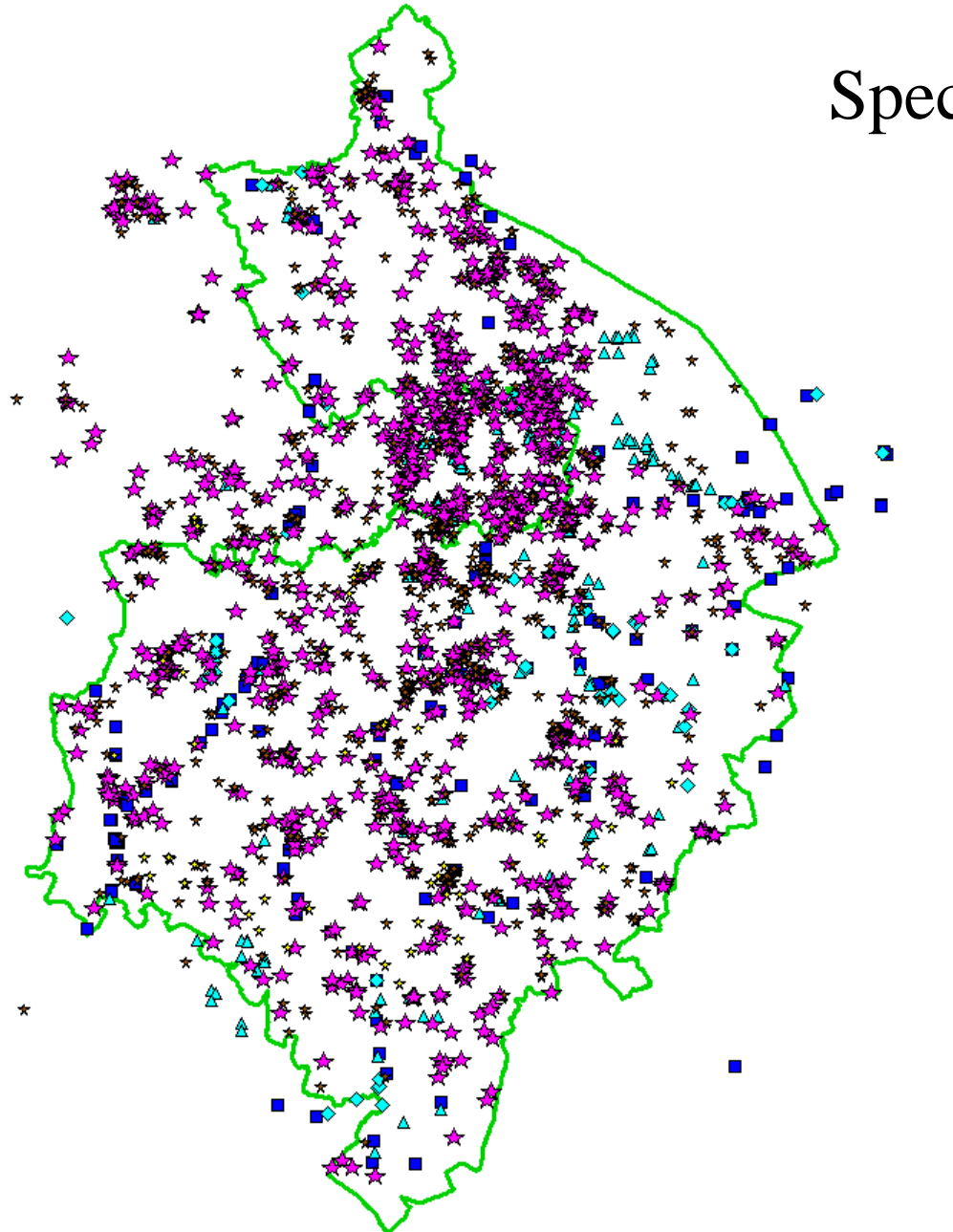
HBA

North Warwickshire



This plan has been produced specifically to supply an individual with value added Local Authority information. Reproduction from the Ordnance Survey mapping with the permission of the Controller of Her Majesty's Stationery Office © Crown Copyright. Unauthorised reproduction infringes Crown Copyright and may lead to prosecution or civil proceedings. Licence number 100018285

Species

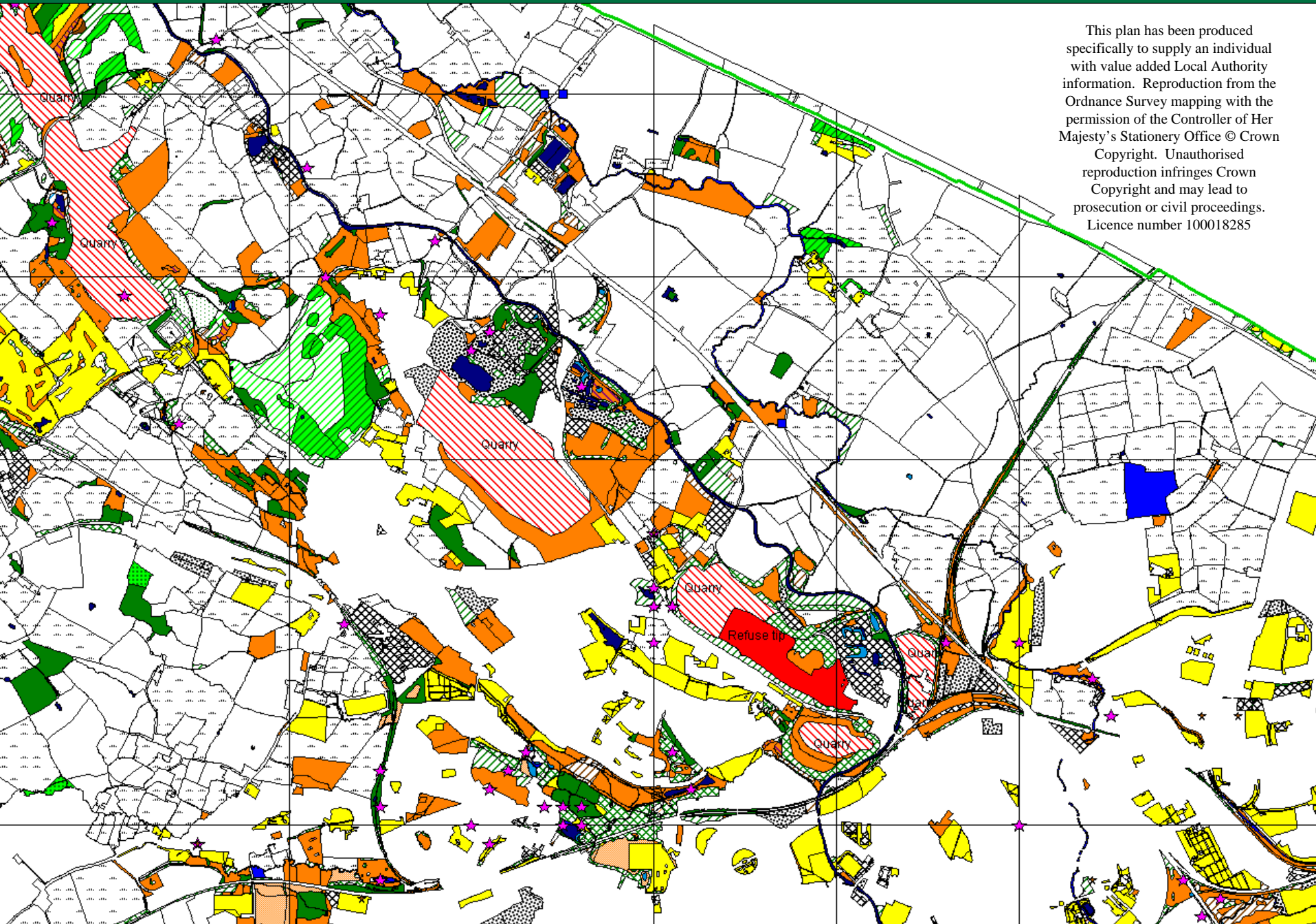


The Plan

- Use this information to
 - Appraise potential (allocated) sites
 - Check these and any other sites as they arise
 - Request further information (we don't know everything! Wildlife is living it moves)

Adult, Health and Community Services

This plan has been produced specifically to supply an individual with value added Local Authority information. Reproduction from the Ordnance Survey mapping with the permission of the Controller of Her Majesty's Stationery Office © Crown Copyright. Unauthorised reproduction infringes Crown Copyright and may lead to prosecution or civil proceedings. Licence number 100018285



Plan Restoration

- Use this information to
 - suggest restoration targets to fulfill Biodiversity Action Plan Targets (BAPs)



- Business & Jobs
- Community Safety
- Council & Community
- Environment & Planning
- Leisure & Tourism
- Roads & Travel
- Schools & Learning
- Social Care & Health

Search Site

Advanced Search
Quick Links

Biodiversity Action Plan



Habitat Action Plans

Grassland, Farmland and Woodland

- [Lowland Acid Grassland](#)
- [Lowland Calcareous Grassland](#)
- [Lowland Heathland](#)
- [Lowland Neutral Grassland](#)
- [Field Margins](#)
- [Hedgerows](#)
- [Woodlands](#)
- [Orchards](#)
- [Wood-Pasture, Old Parkland & Veteran Trees](#)
- [Scrub & Carr](#)

- [Bibliography](#)
- [Links to other web sites](#)



- Business & Jobs
- Community Safety
- Council & Community
- Environment & Planning
- Leisure & Tourism
- Roads & Travel
- Schools & Learning
- Social Care & Health

Search Site

Advanced Search
Quick Links

Biodiversity Action Plan



Habitat Action Plans

Urban, Post-industrial, Wetland

- [The Built Environment](#)
- [Parks & Public Open Spaces](#)
- [Roadside Verges](#)
- [Allotments](#)
- [Canals](#)
- [Churchyards & Cemeteries](#)
- [Disused Industrial & Railway Land](#)
- [Gardens](#)
- [Quarries & Gravel Pits](#)
- [Ponds, Lakes Reservoirs](#)
- [Rivers & Streams](#)
- [School Grounds](#)
- [Fen & Swamp](#)
- [Reedbeds](#)

- [Bibliography](#)
- [Links to other web sites](#)





- [Business & Jobs](#)
- [Community Safety](#)
- [Council & Community](#)
- [Environment & Planning](#)
- [Leisure & Tourism](#)
- [Roads & Travel](#)
- [Schools & Learning](#)
- [Social Care & Health](#)

Search Site



Advanced Search

Quick Links



[-> Biodiversity Home](#)

[What is Biodiversity ?](#)

[About the Plan](#)

[The Action Plans](#)

[- Habitat Action Plans](#)

[- Species Action Plans](#)

[Links](#)

[Bibliography](#)

[The Partners](#)

[How you can help](#)

Biodiversity Action Plan

Species Action Plans A - D

- [Adder](#)
- [Argent & Sable Moth](#)
- [A Cuckoo Bee](#)
- [A Leaf-rolling Weevil](#)
- [Barn Owl](#)
- [Bats](#)
- [Bittern](#)
- [Black Poplar](#)
- [Bloody-nosed Beetle](#)
- [Chalk Carpet Moth](#)
- [Dingy Skipper Butterfly](#)
- [Common Dormouse](#)
- [Dotted Bee-fly](#)

[Links to other web sites](#)
[Bibliography](#)



- [Business & Jobs](#)
- [Community Safety](#)
- [Council & Community](#)
- [Environment & Planning](#)
- [Leisure & Tourism](#)
- [Roads & Travel](#)
- [Schools & Learning](#)
- [Social Care & Health](#)

Search Site



Advanced Search

Quick Links



[-> Biodiversity Home](#)

[What is Biodiversity ?](#)

[About the Plan](#)

[The Action Plans](#)

[- Habitat Action Plans](#)

[- Species Action Plans](#)

[Links](#)

[Bibliography](#)

[The Partners](#)

[How you can help](#)

Biodiversity Action Plan



Species Action Plans E - Z

- [Farmland Birds](#)
- [Great Crested Newt](#)
- [Lapwing](#)
- [Otter](#)
- [Rare Bumblebees](#)
- [Red Wood Ant](#)
- [Scarce Arable Plants](#)
- [Small Blue Butterfly](#)
- [Snipe](#)
- [Song Thrush](#)
- [Water Vole](#)
- [White-clawed Crayfish](#)
- [Wood White Butterfly](#)

[Links to other web sites](#)
[Bibliography](#)





QUARRIES AND GRAVEL PITS

1. INTRODUCTION

There has been a history of quarrying in the sub-region stretching back several centuries and exploiting a variety of deposits such as limestone, clay and ironstone in the south and east, coals, shales, quartzites and volcanic rocks in the centre and north, and sands and gravels in river valleys or areas of glacial drift deposits. Whilst some mineral sites have been land-filled and even built over, many large quarries, gravel pits, sand pits and their associated spoil heaps or sidings still remain. Many are abandoned or managed for nature conservation, a few quarries are still active. But wherever regular disturbance ceases, semi-natural habitats start to develop and can evolve into highly complicated habitat mosaics, often containing a variety of grasslands, wetlands, ruderal habitats, scrub and secondary woodlands. No other land-use in the sub-region has produced so many large, species-rich wildlife sites, or is so uniquely placed to help us create new ones for the future. The number of scarce plant and insect species found at some sites can be remarkable and the best are only matched in our area by the best ancient woods.



Bishop's Bowl © Steve Falk

Current data suggests that several hundred insect and plant species are mainly or entirely reliant on such sites, including a high proportion of our Red Data Book (RDB) and Nationally Scarce species of fly, bee, wasp, beetle and butterfly. Our limestone quarries now contain much of our better limestone grassland and the many attractive 'calicolous' plants this supports – also the Midlands top bumblebee site (with 9 species). Our gravel pits support most of the best wetlands, including most of our larger reedbeds and important water bird assemblages (including an important bittern site). Our strongest population of the internationally threatened white-clawed crayfish occurs at Ensor's Pool, an old brick pit. Yet some of these sites fall into the category of Previously Developed or 'brown-field' land, which is viewed as a more acceptable location for new development or landfill, than 'green-field' land. It is recognised that many of the habitats contained within this action plan are subject of other HAPs – but this HAP is geared towards promoting the diverse character of such sites and assisting the organisations that specifically own or manage them. Many of these sites have features of local geological importance. Any action for biodiversity should be harmonised with the geological management requirements of the site where possible. In fact in some instances the requirements may be the same.

2. OUR OBJECTIVES & TARGETS

	Target
A. To identify all ecologically important quarries, gravel pits and sandpits, and their ownership (including freehold or leasehold status).	by 2003
B. To maximise our knowledge of such sites and ensure they are appropriately designated (e.g. SINC or SSSIs).	by 2005
C. To maintain and enhance the extent and quality of semi-natural habitats in and around mineral sites (with regard to any restoration plans and planning requirements already in place), with priority given to those holding UK BAP Priority Species, Red Data Book, Nationally Scarce and Regionally Scarce species.	ongoing
D. To promote the retention or creation of wildlife habitat following the completion of active quarrying and in planned new quarries and develop a policy framework for this in local planning documents.	ongoing
E. As above for landfill sites, promoting the importance of capping with locally-sourced subsoil and creating topographic features, wetlands etc.	ongoing
F. To promote the importance of quarries and gravel pits for wildlife, to promote good conservation management practice and to share knowledge.	ongoing
G. To promote closer dialogue between ecologists, planners, minerals operators and developers.	2005
H. To integrate biodiversity schemes with geological conservation.	2005

ASSOCIATED HABITAT PLANS

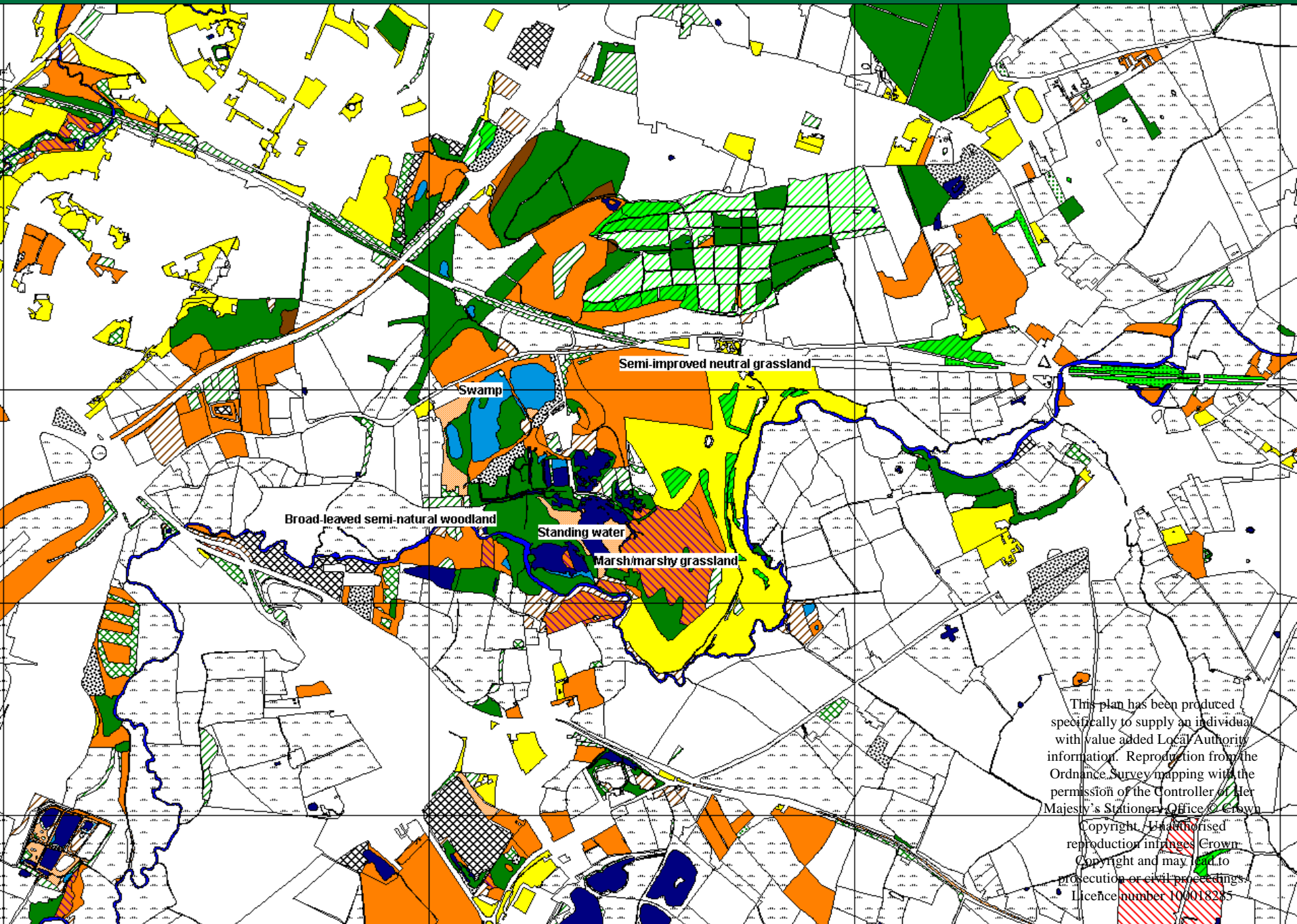
- [Disused Industrial & Railway Land](#)
- [Ponds, Lakes & Reservoirs](#)
- [Reedbeds](#)
- [Fen & Swamp](#)
- [Lowland Grasslands \(all types\)](#)
- [Woodlands](#)
- [Scrub & Carr](#)

ASSOCIATED SPECIES PLANS

- [Small Blue](#)
- [Dingy Skipper](#)
- [Chalk Carpet](#)
- [Dotted Bee-fly](#)
- [Lapwing](#)
- [Great Crested Newt](#)
- [Snipe](#)
- [Otter](#)
- [Bittern](#)

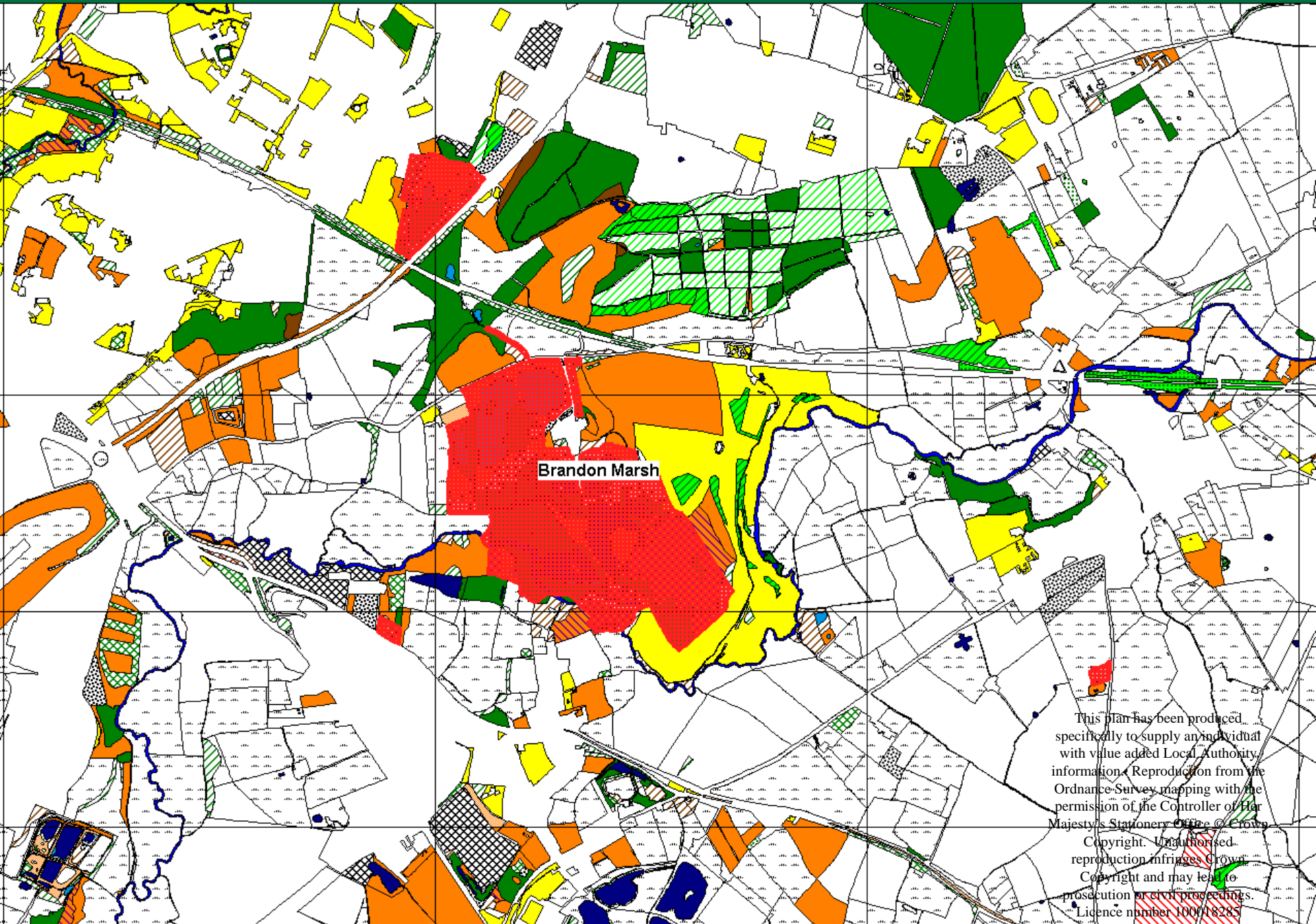
If we get it right...

- There is the opportunity to look into the future and plan Habitat and Species recovery...
- Not now but lay the foundations to help all the other living things that live with us here and now.



This plan has been produced specifically to supply an individual with value added Local Authority information. Reproduction from the Ordnance Survey mapping with the permission of the Controller of Her Majesty's Stationery Office © Crown

Copyright. Unauthorised reproduction infringes Crown Copyright and may lead to prosecution or civil proceedings.
• Licence number 100018285



Brandon Marsh

This plan has been produced specifically to supply an individual with value added Local Authority information. Reproduction from the Ordnance Survey mapping with the permission of the Controller of Her Majesty's Stationery Office © Crown Copyright. Unauthorised reproduction infringes Crown Copyright and may lead to prosecution or civil proceedings. Licence number 100018285



Brandon Marsh Nature Reserve
SSSI



Alvecote Pools - Site of Scientific Special Interest (SSSI)

Summary

- Appraisal
- Save and Protect
- Allocate / Promote
- Advise on Restoration
- Provide a Sustainable Future

Being Pro-active in Conserving our (and their) Future Biodiversity

David Lowe, Senior Ecologist

01926 418060

davidlowe@warwickshire.gov.uk

