

MINERALS FORUM

REVISED SPATIAL OPTIONS

March 2009



MINERALS LOCAL PLAN 1995

- Local Plan / Structure Plan system
- Strategy?
- Scattered / Dispersed Approach?
- Preferred Areas (9)
- Areas of Search (11)
- Unimplemented Sites 17

MINERALS LDF 2009

- New Development Plan system - 2004 Act
- Strategic Context – RSS
- Mineral Planning Statement 1 and Practice Guide
- Spatial Strategy – Realistic Options
- Strategic Sites - 27
- Emphasis On Delivery
- Sustainable Mineral Extraction

PPS12

- Spatial Planning
- Core Strategy
- Strategic Sites
- Justification of Core Strategies
- Evidence Base
- Soundness

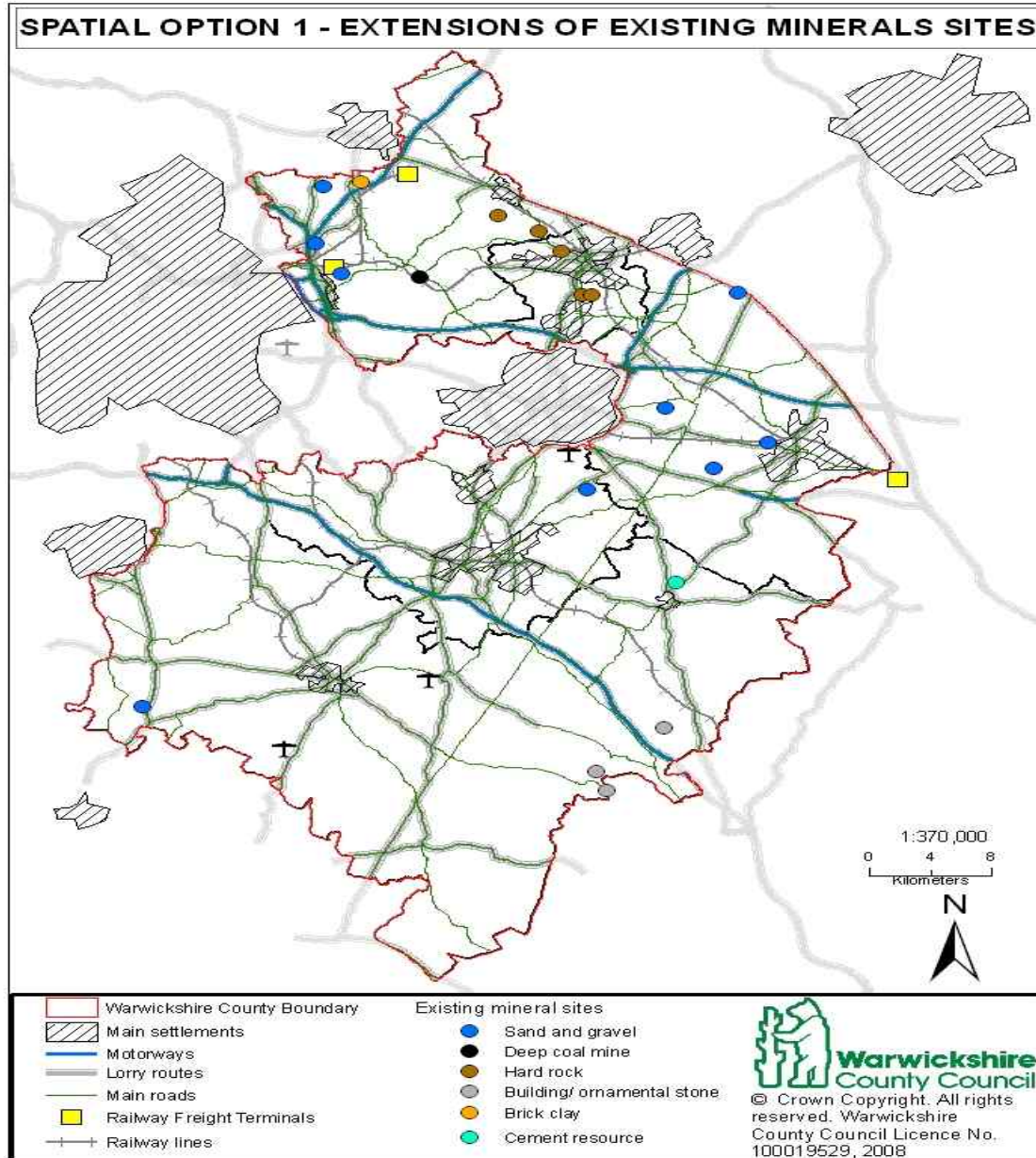
MINERALS REVISED SPATIAL OPTIONS DOCUMENT

- 1 Policy Background
- 2 Development of Spatial Strategy and Spatial Options
- 3 Issues
- 4 Sites submitted by Operators/ Developers/ Landowners

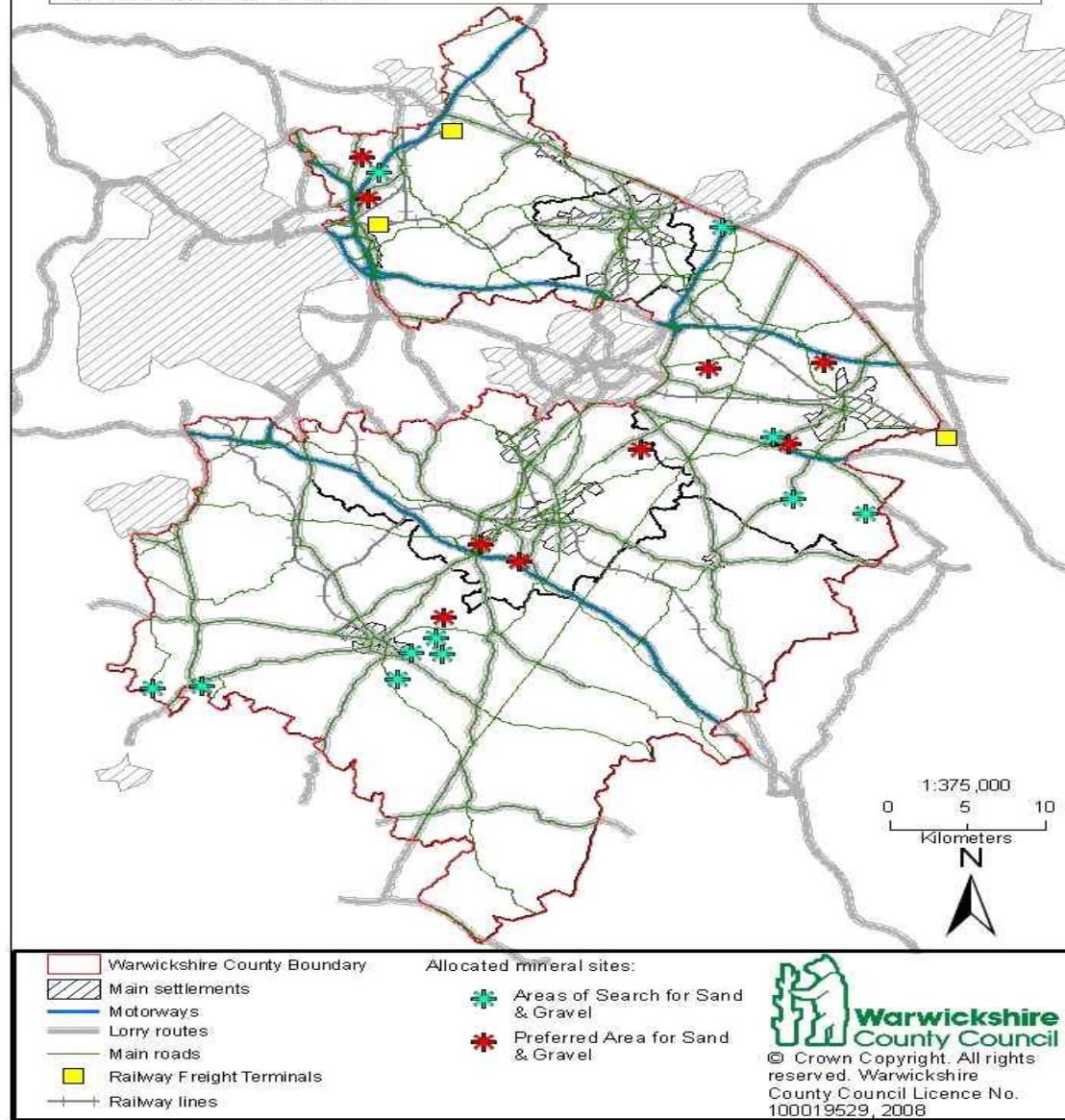
DEVELOPMENT OF THE SPATIAL STRATEGY

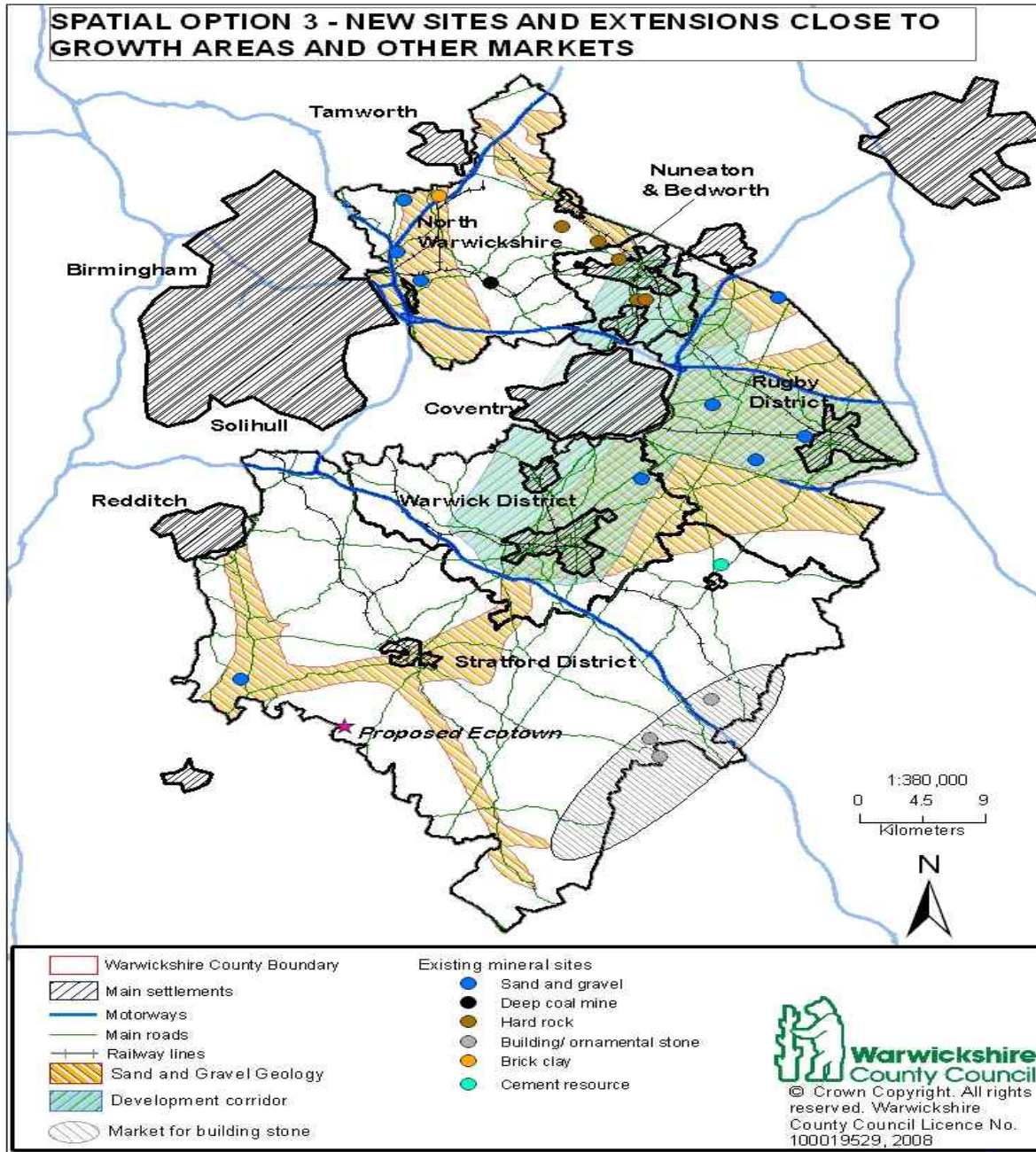
- 5 Plans

- Geology
- Transport
- Growth Areas / Markets
- Constraints
- Lorry Routes



**SPATIAL OPTION 2 - CONTINUATION OF EXISTING MINERALS
PLAN ALLOCATIONS**





STRATEGIC SITES

- “Core Strategies may allocate sites for development. These should be central to the achievement of the Strategy”
- Sand and Gravel – RAWP = 1.043 mtpa
- Crushed Rock – RAWP = 1.4 mtpa
- Clay for Cement – Southam Quarry
- Coal – Daw Mill
- Brick Clay – Kingsbury Brickworks
- Building Stone – Cotswolds.

STRATEGIC SITES - SAND AND GRAVEL

- RAWP = 1.043 mtpa
- 8 Existing sites – (2 running out)
- Landbank – 6 years
- Requirement approx 17/18m tonnes to 2026
- Threshold for Strategic Sites?

ISSUES

- Mineral Safeguarding
- Restoration
- Agricultural Land
- Inert Waste
- Flood Risk Management
- Renewable Energy and Carbon Reduction

MINERAL SAFEGUARDING

- BGS Study
- Mineral Safeguarding Maps
- Mineral Consultation Areas
- Joint working between Districts and County Council
- Prior extraction

RESTORATION

- Following the previous consultation.....
- No standard restoration policy in LDF
- Contribution to BAP Targets
- Minerals Forum to be continued?

AGRICULTURAL LAND

- All proposals should have a full agricultural land quality survey
- The use of lower grade agricultural land should be encouraged ahead of higher quality land when assessing sites.
- Where Higher Grade land is affected it must be restored to at least its previous land classification

INERT WASTE

- Discourage the use of landfilling – the onus should be on the developer to show why the material can not be recycled.
- Where inert waste infill is the only option restoration should be to lower than existing ground levels
- Inert infill restorations should meet agreed BAP targets.

FLOOD RISK / HYDROLOGY

- Restore quarries as flood risk storage areas
- PPS25 Sequential Test
- Sand and Gravel = Water Compatible
- SFRA – Level 1 – areas mapped
- River Basin Management Plans
- River Catchment Management Plans
- **SUMMARY** – SUD's, Flooding, Hydrology must be taken in to account.

RENEWABLE ENERGY/ CARBON REDUCTION MEASURES

- Proximity Principle
- Renewable Energy – How can it be accommodated?
- Biomass / Energy Crop restoration schemes
- Any other methods of reducing carbon?

Thank you - Any Questions?

