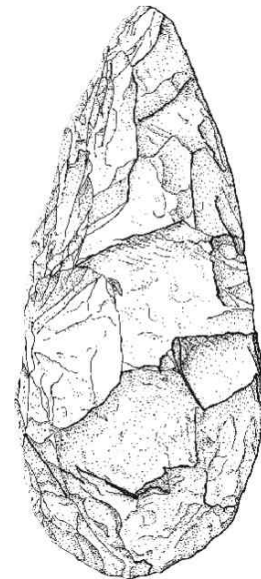


Minerals Extraction, Planning and Archaeology

Jonathan Parkhouse, County Archaeologist,
Warwickshire County Council



ALSF Minerals Assessment

- Corpus of baseline data to inform future strategies
- Enhancement of Historic Environment Records
- Greater general awareness of issues around aggregates and archaeology

Warwickshire County Council

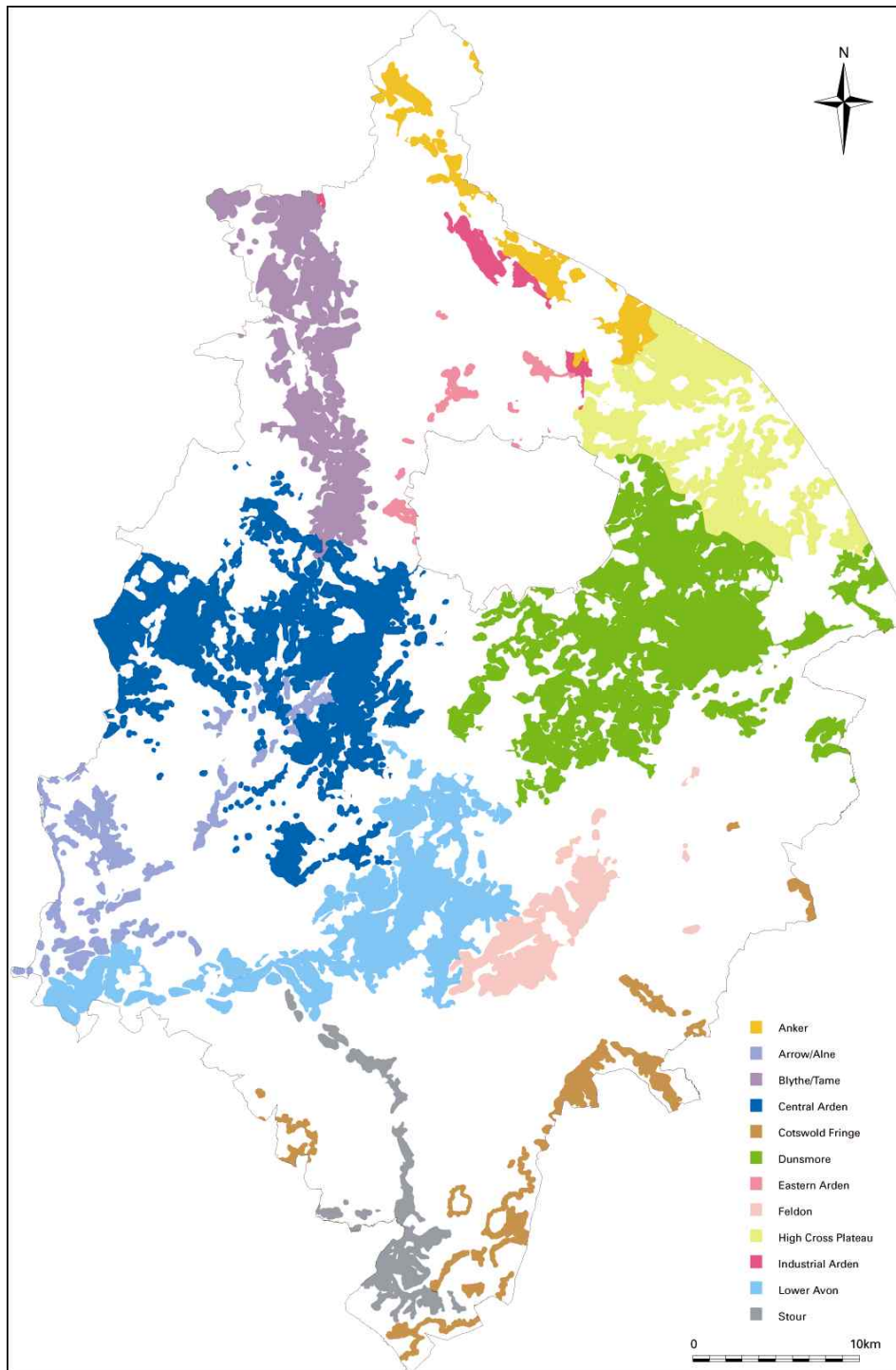


Archaeological Resource
Assessment of the Aggregates
Producing Areas of Warwickshire
and Solihull

Final Report Draft
Version 2.0
31/03/2008

By Magnus Alexander
with Stuart Palmer and Laurence Chadd

Aggregates Levy Sustainability Fund
English Heritage Project No 4681



Study areas:

Anker

Arrow/Alne

Blythe Tame

Central Arden

Cotswold Fringe

Dunsmore

Eastern Arden

Feldon

High Cross Plateau

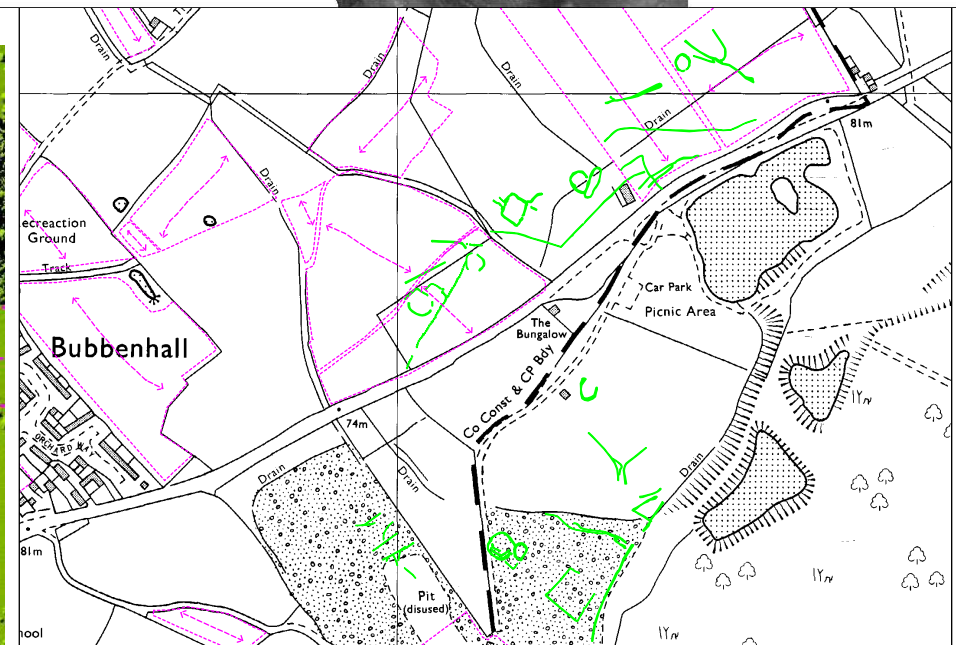
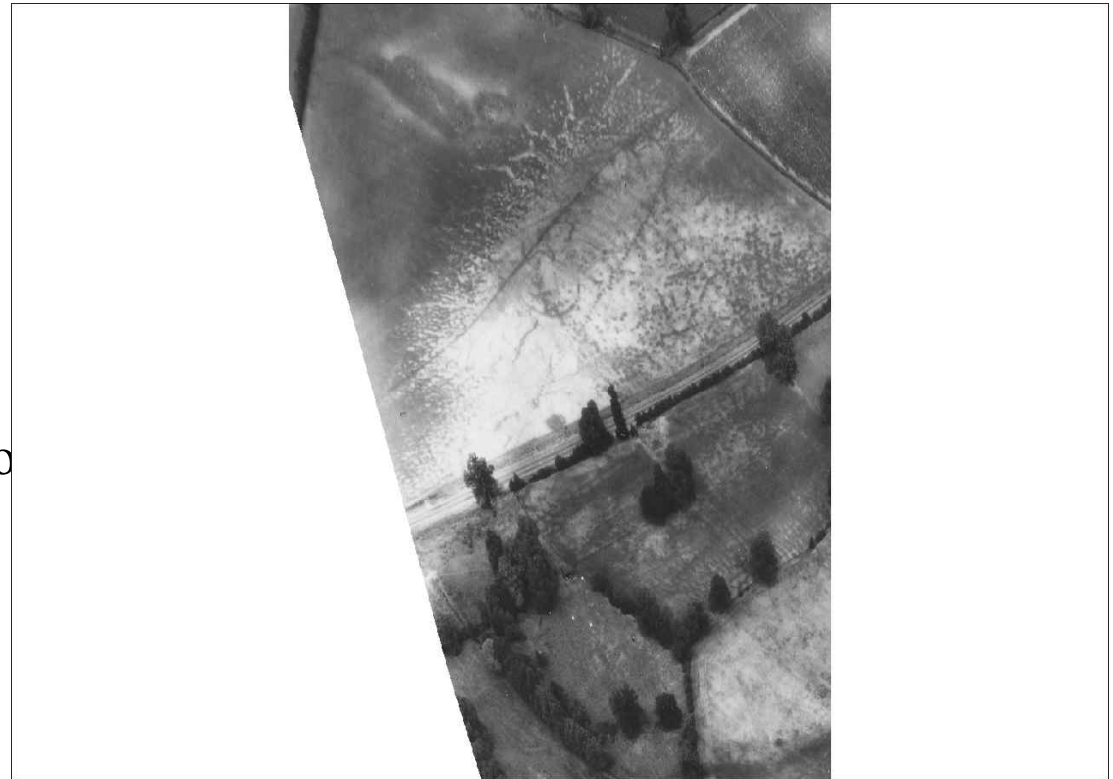
Industrial Arden

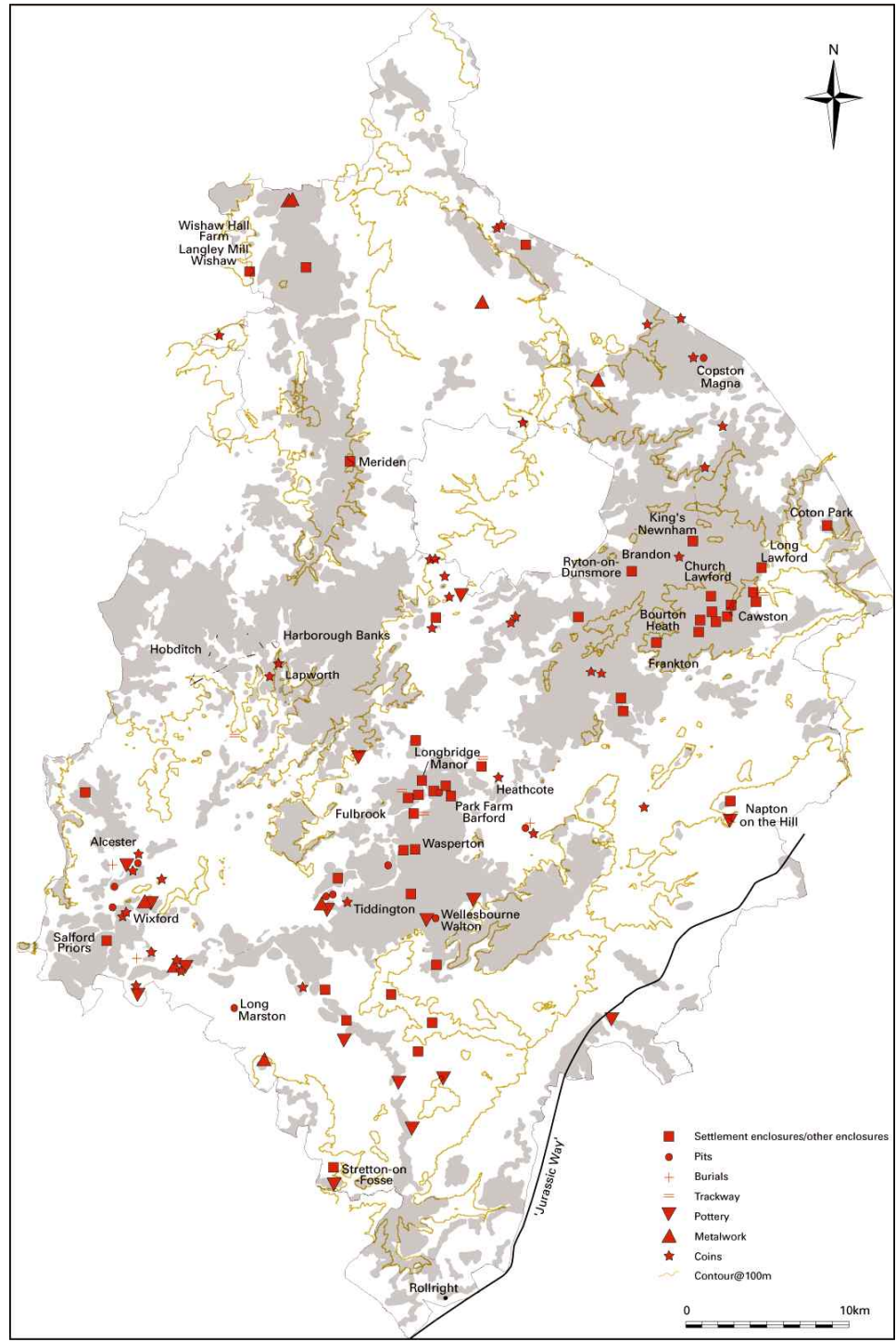
Lower Avon

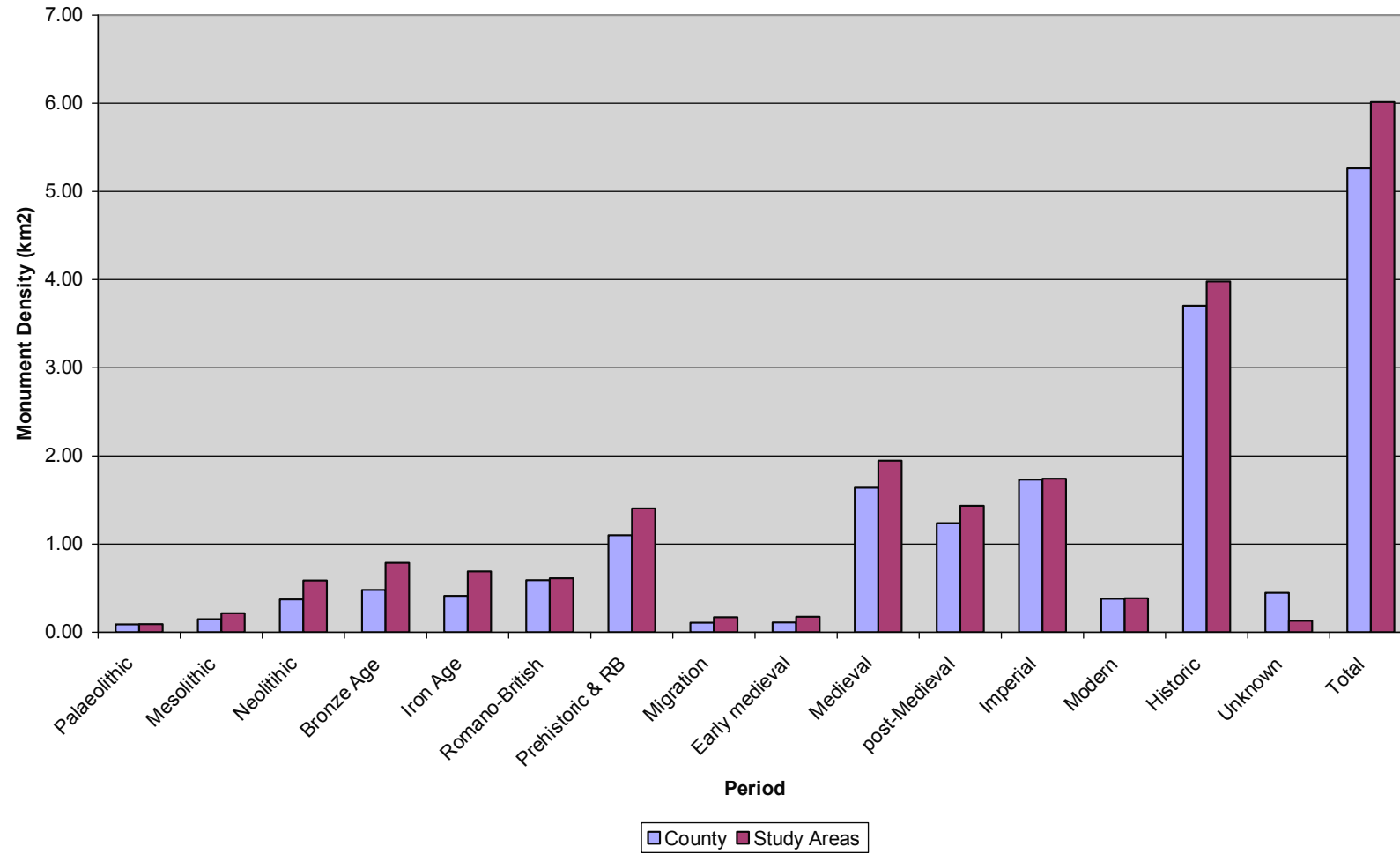
Stour

Data enhancement

- Aerial photography:
 - - Georeferencing of AP data
 - - Mapping of selected area to NMP standards
- (Lidar)







Monument Density by Period

Research Framework and Agenda:

What questions will the archaeological resource in the aggregates areas answer?

Management of the archaeological resource

How do we manage the historic environment in the context of minerals extraction?

Development Control & Archaeological Mitigation

Preservation of Archaeological Remains In Situ (PARIS)

A material consideration, thus (PPG16, para 8):

'Where nationally important archaeological remains, whether scheduled or not, and their settings, are affected by proposed development there should be a presumption in favour of their physical preservation'

Also reflected in PPG15 para 2.4, 3.3; PPS1 para 17 and MPS 1 para 14.

So..

Every planning application needs to be assessed in respect of whether nationally important archaeological remains are present.

Application of the PARIS principle ‘front loads’ the archaeological process so that potentially problematic archaeological issues are dealt with at an early stage.

Developers also have the benefit of a degree of certainty that archaeology will not be constraint on subsequent development.

Pre-determination assessment is the standard advice of most archaeological advisors where it is thought that there is a risk of PARIS – using the precautionary principle

Minerals developments

Destruction is comprehensive – far less scope for leaving archaeology in situ than on other forms of development.

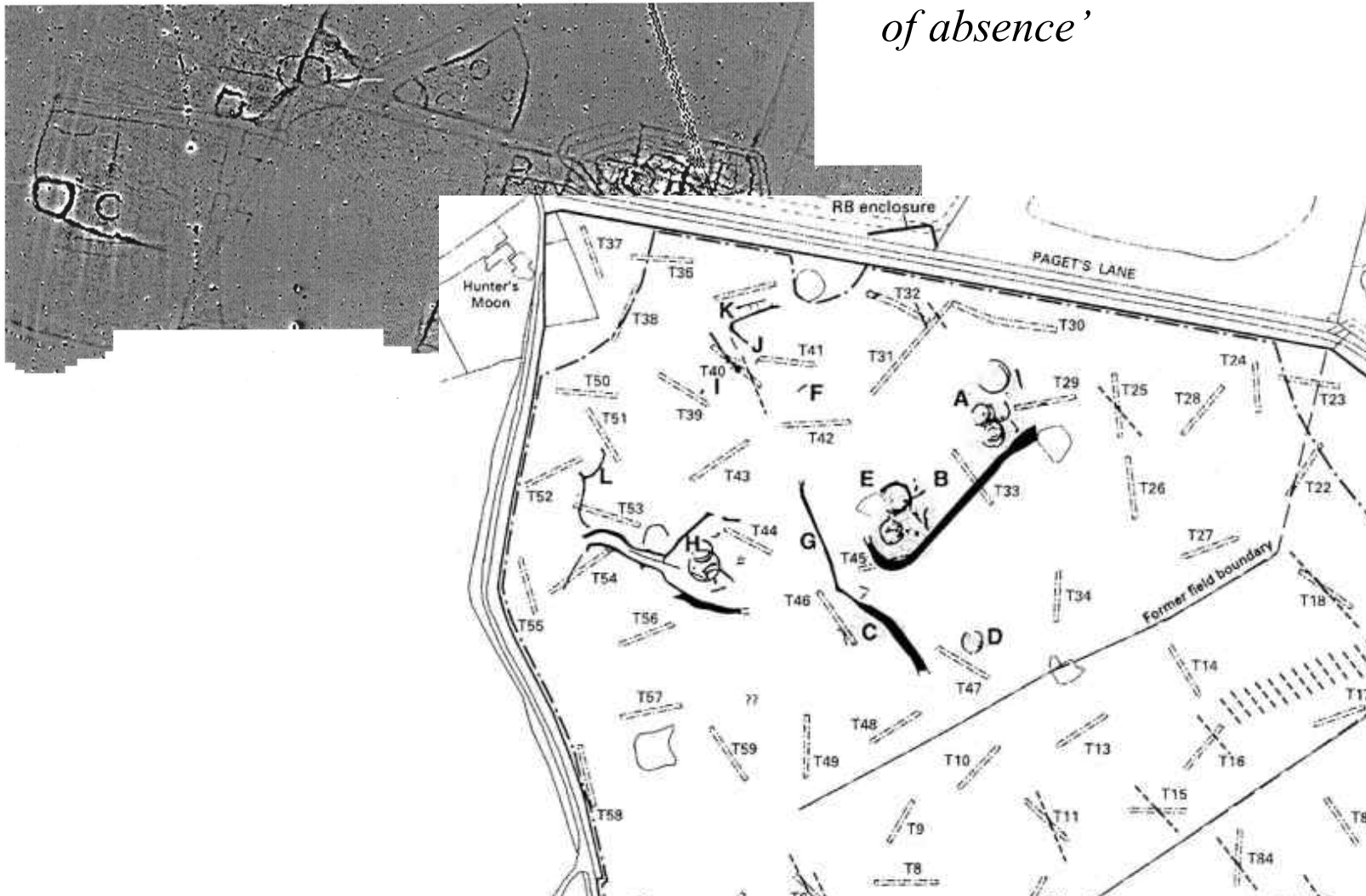


Frequently, the archaeology has not yet been discovered – but predictive modelling may indicate the likelihood of remains being present.

“The known unknowns and the unknown unknowns”

Evaluation:

'Absence of evidence is not evidence of absence'

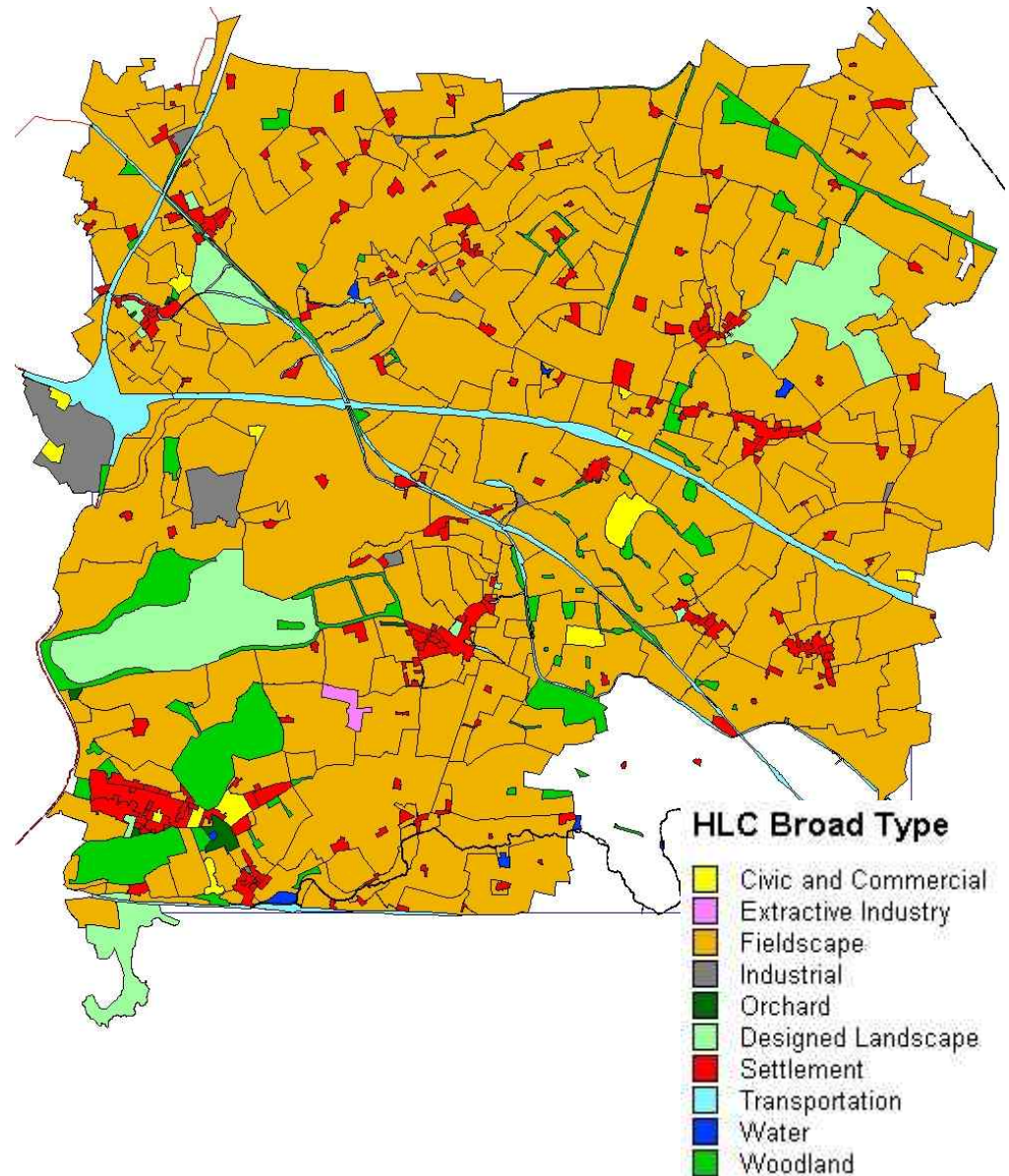


Sampling frequency is critical: relatively high % sampling may be required

Historic Landscape Context

RSS Policy QE5:

[LDFs] to ‘identify, protect, conserve and enhance the Region’s diverse historic environment and manage change in such a way that respects local character and distinctiveness’





Rapid appraisal of potential sites:

- known sites
- Potential for unknown sites
- Identification of sensitivity
- Preliminary recommendations for further work, including prior evaluation

Minerals Core Strategy
REVISED SPATIAL OPTIONS
February 2009

Resources and Guidance:

Archaeological Resource Assessment of the Aggregates Producing Areas of Warwickshire:

http://ads.ahds.ac.uk/catalogue/archive/warksagg_gh_2008/downloads.cfm

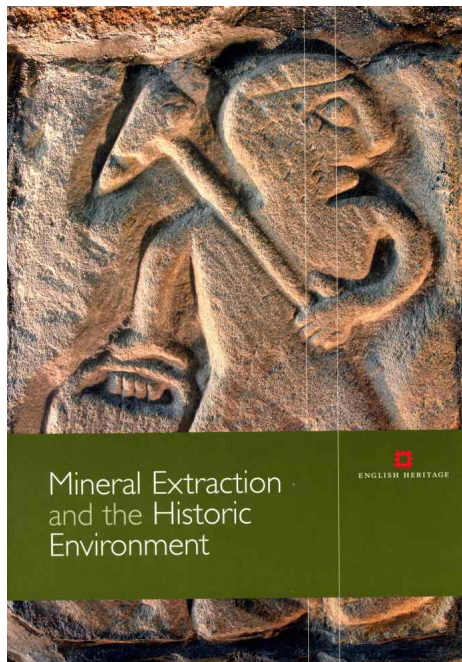


Archaeological Resource
Assessment of the Aggregates
Producing Areas of Warwickshire
and Solihull

Final Report Draft
Version 2.0
31/03/2008

By Magnus Alexander
with Stuart Palmer and Laurence Chadd

Aggregates Levy Sustainability Fund
English Heritage Project No 4681



Mineral Extraction and Archaeology: A
Practice Guide (2008),

and

Mineral Extraction and the Historic
Environment (2008)

both available on HELM website

<http://www.helm.org.uk/server/show/nav.00h01c001/chooseLetter/M>

