

Introduction to Project Transform

Coventry Partnership

Wednesday 12th May 2010

Michelle Darby & Lucy Rumble

Communications Officers



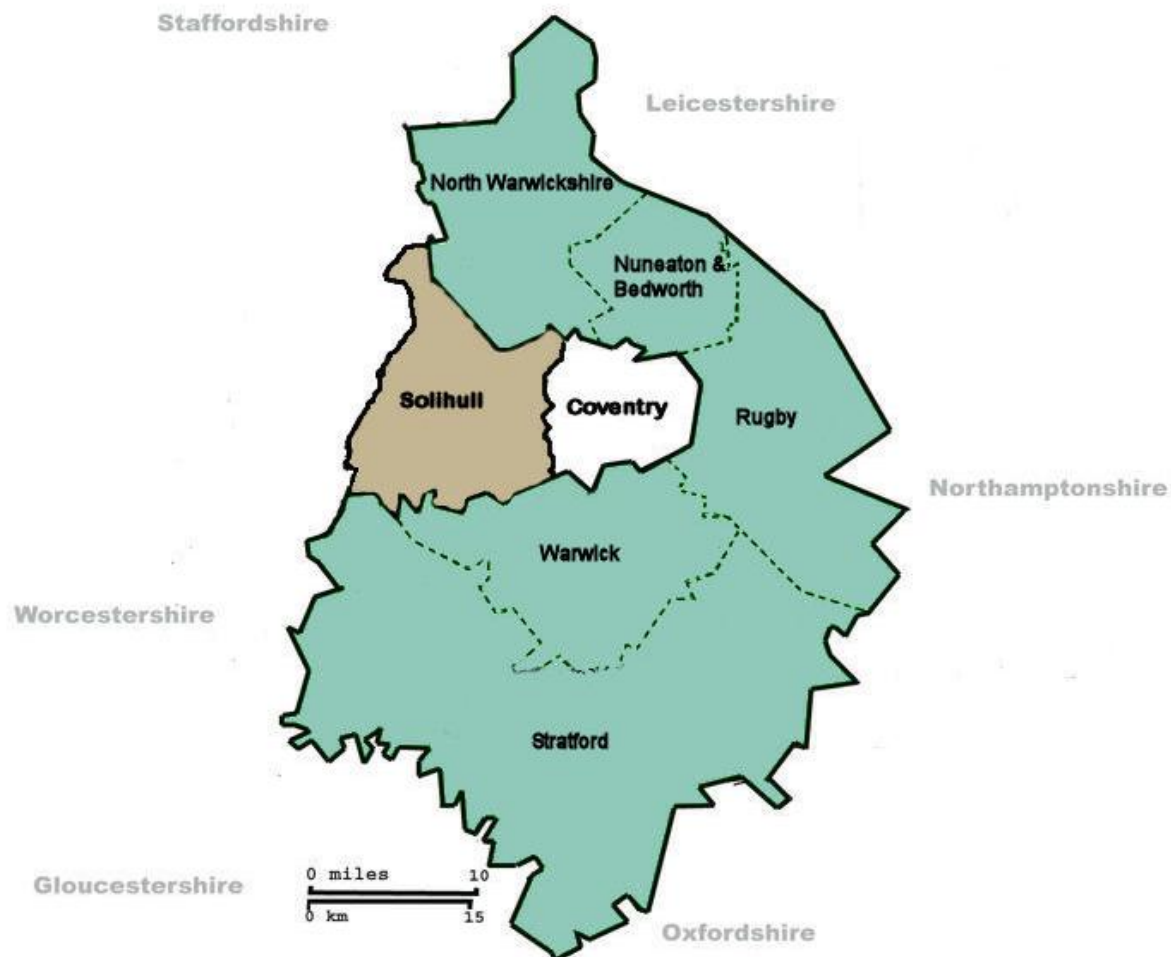
Presentation Overview

- What is Project Transform
- The partnership's aims and objectives
- How is the project managed
- The outline business case
- Project stages
- Town planning
- Next steps
- Summary
- Questions

What is Project Transform?

- Partnership between Coventry City Council, Solihull Metropolitan Borough Council and Warwickshire County Council
- Collaborating on waste management
 - Economies of scale
 - Improved services for residents of sub-region
- Big issue - disposing of rubbish that can't be usefully reused or recycled (residual waste).
 - Current estimate - by 2042 residents in the region will throw away 284,000 tonnes of rubbish that can't be recycled
- Key project - developing a new residual waste treatment facility to serve the sub-region – supported by Private Finance Initiative Credits (PFI)

Who are Project Transform?



Why?

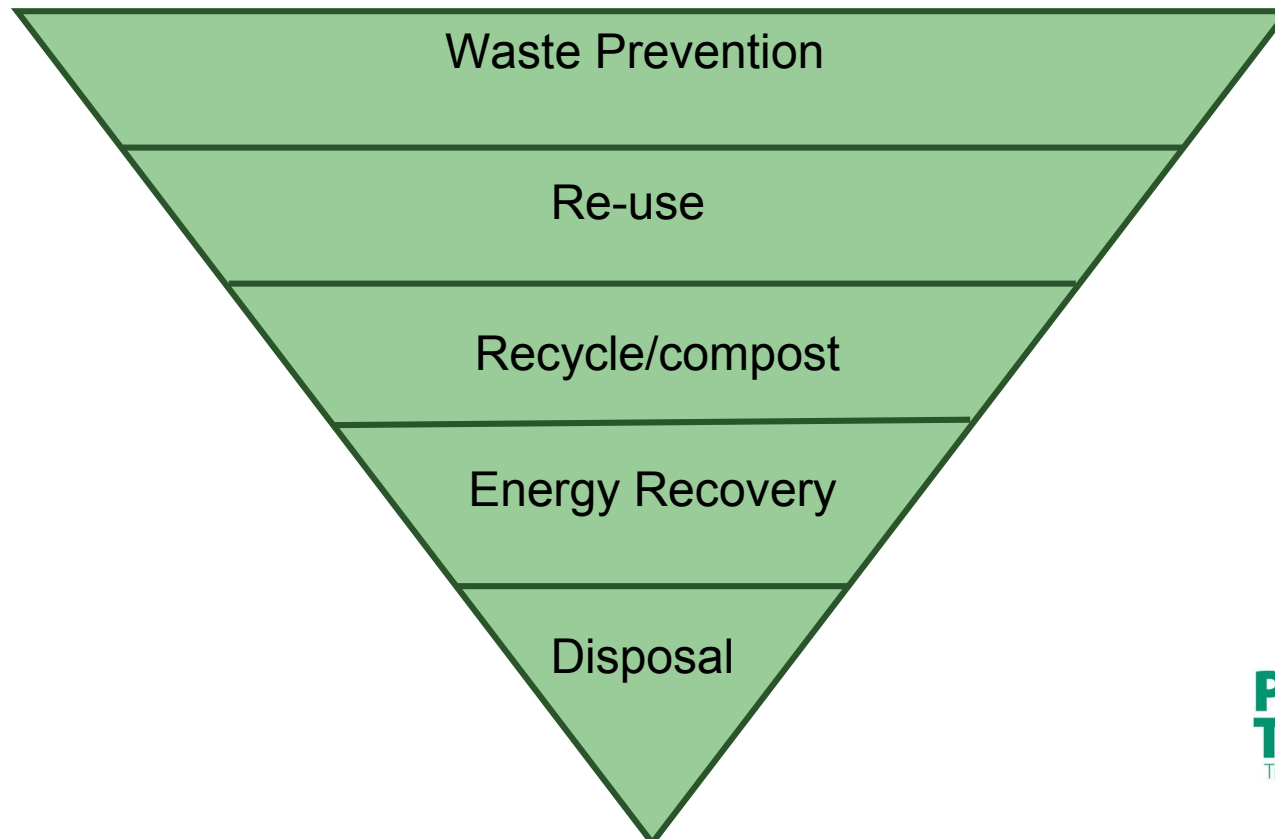
- All three councils are fully committed to working together on waste management
- By working together we can achieve better for less
- Economies of scale: one shared facility = better value for the taxpayer
- Reduce our reliance on landfill
- A new, modern facility means we can minimise long term impacts on the environment

What are the aims of Project Transform?

- To manage waste to move up the waste hierarchy
- Develop sustainable waste management solutions
- Meet EU Landfill Directive targets to divert waste from landfill
- Meet waste reduction, recycling and composting targets
- Develop a residual waste treatment facility (focus on recovery not disposal)

What are the aims of Project Transform?

- The Waste Hierarchy



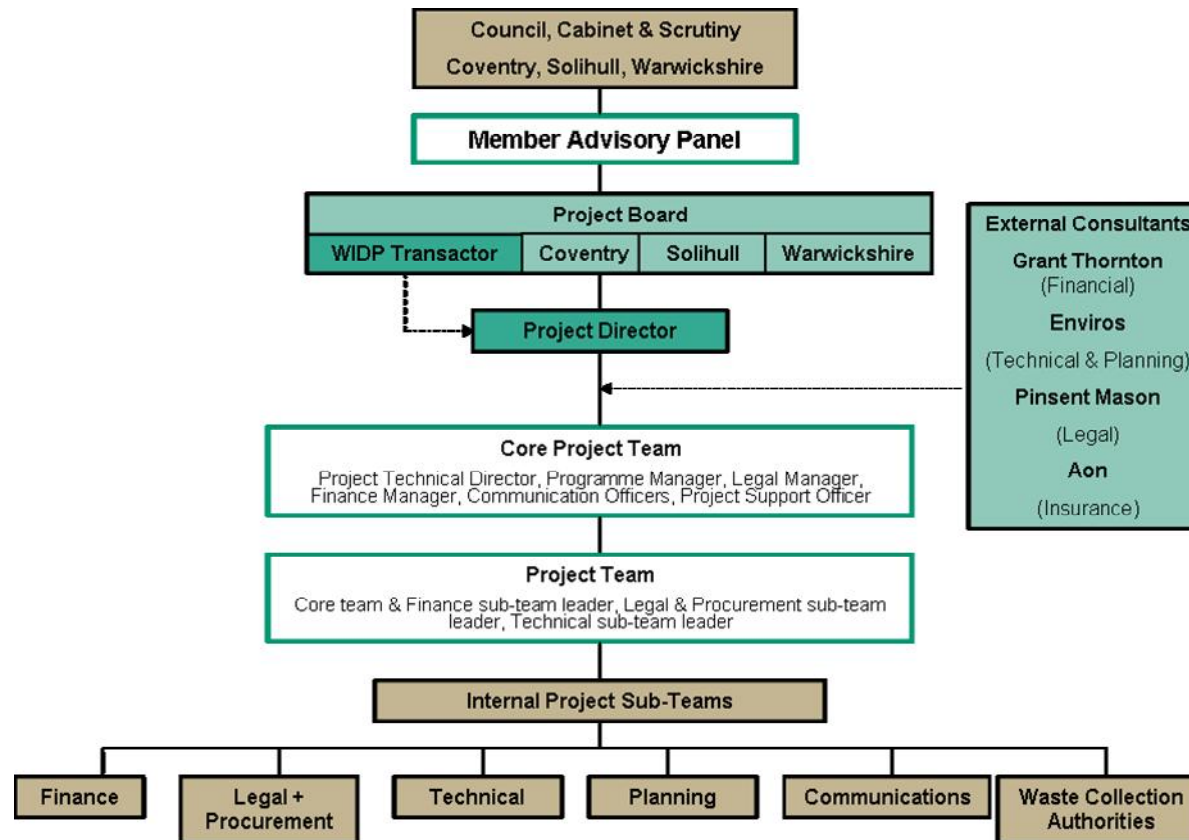
Meet the team

Core Team oversees day to day running of Project Transform



Director (John Daly)
Technical Director,
Programme Manager
Legal Manager
Communications
Officers (job share)
Project Support
Officer.

How is the project managed?



Outline business case

- As part of PFI application process an Outline Business Case was developed
- Included development of a **reference project** on which costs were based
- Reference project looked at potential technology, location and processing capacity

Reference project for Project Transform

Technology	Energy from waste with Combined Heat and Power
Capacity	305,000 tonnes
Recycling rate & Landfill Diversion	51% by 2020 (collective) Maximise diversion from landfill
Location	Coventry
Contract length	25 years
Contract type	PFI
Procurement	Competitive Dialogue

Approach to the market

Technology	Neutral – bidders to propose solutions
Capacity	Bidder to propose capacity
Recycling rate & Landfill Diversion	Bidders required to recycle an additional 5% from material delivered to facility. Maximise diversion from landfill
Location	Bidders can propose alternative sites
Contract length	25 years
Contract type	PFI
Procurement	Competitive Dialogue

Project stages - Procurement

May 2012
Contract Awarded
 Contract will be awarded to the preferred solution

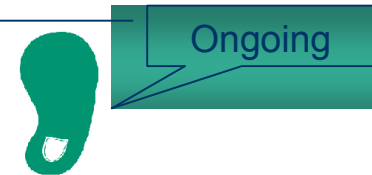
December 2011
Preferred Bidder Selected
 Preferred solution will be selected

September 2011
Final Tenders Stage
 Selected bidders required to submit their final solutions

August 2010—September 2011
Detailed Solutions Stage
 Selected bidders refine their outline solutions to provide detailed solutions

January 2010—July 2010
Outline Solutions Stage
 Selected bidders propose their outline solutions

November 2009
Pre-Qualification Stage
 Potential bidders returned completed questionnaires



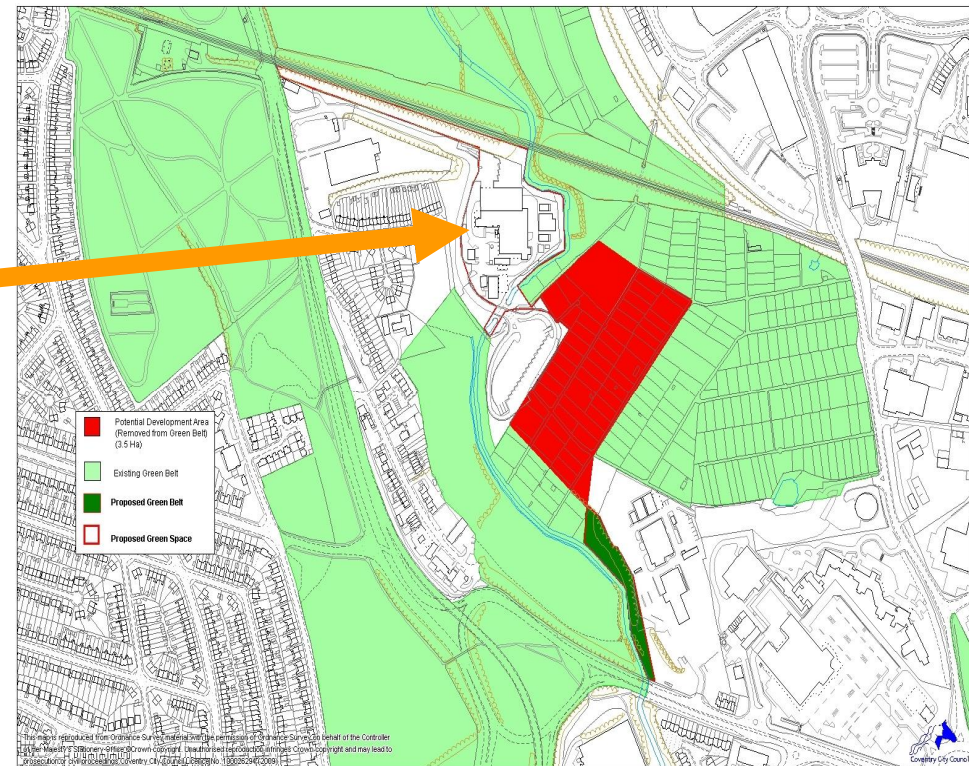
Reference site and planning



Current energy from waste plant – Whitley, Coventry

Reference site

- Coventry
- Positives:
 - Council Owned
 - Existing EfW
 - Transport links
 - CHP Network
- Challenges:
 - Greenbelt
 - SINC
 - Statutory Allotment Land
~ Successfully delisted in
March 2010



Planning Timetable

PLANNING

**Submit Outline Planning
Application –n2010**

**Preferred Bidder Submits Full Planning
Application & Environmental Permit
Application 2012**



Key Next Steps

- Preparing outline planning application
June 2010 – liaison with local residents
- Shortlist final three bidders to go through to next stage of procurement
August 2010

Summary

- Sub-regional partnership project
- Providing a new facility to treat waste, reduce carbon emissions and minimise rubbish going to landfill.
- Needs to treat waste in the most environmental, cost effective and sustainable way.
- Complex procurement process
 - £1 billion – lifetime cost of 25 year project
- Experienced, specialist team in place to deliver
- Major area of public/political interest
- Clear and effective communications - critical

**For more information on the
Project our website is**

www.projecttransform.info

Or email us at:

info@projecttransform.info

