

July 2008 / July 2009 Progress Report

Here is a list of all the county and Warwickshire Climate Change Partnership (WCCP) specific things that the Warwickshire County Council (WCC) Climate Change Team have been able to report on during the year through: the WCCP web pages, the monthly news and events bulletin and the community climate change newsletter and the elected Members monthly briefing:

General

1. The Warwickshire Climate Change Partnership (WCCP) second anniversary event, kindly hosted by E.on at Westwood Business Park.
2. WCC achieving ISO 14001 accreditation across the whole authority, from education and social work through to the fire service and libraries.
3. Action 21's community "Green Champions" project.
4. WCC's Building sustainable Neighbourhoods' project.
5. Kenilworth Initiative on Climate Change (KICC) green exhibition and open evening.
6. The recruitment of a new General Manager at Action 21.
7. The Transition Towns initiative started in Royal Leamington Spa led by the Town Council becoming formally registered as such.
8. What will be the first community climate change event in Warwickshire in September at Warwickshire Wildlife Trust, Brandon Marsh.
9. WCC's Climate Change Team talks on how to begin to tackle climate change to Parish and Town Councils.
10. Henley's Green Star Homes project.
11. Snitterfield being chosen by the UK's first carbon neutral village – Ashton Hayes – to be involved in its "Villages without Borders" project.
12. Long Itchington and surrounding village for the Earth (LIFE) environment day.
13. The Learning 2 Deliver (L2D) – Lines of Enquiry: Improving LAA Processes workshop at WCC's training room, Montague Road in Warwick.
14. The L2D Climate Change Act rapid briefing at the GOWM.
15. The LAA County Theme Group and Lead Officer Group meetings.
16. WCC working with community groups representatives to pull together an Intelligent Energy for Europe bid through the Covenant of Mayors to acquire funding for communities to develop their own Sustainable Energy Action Plans.
17. The WCCP tour of the University of Warwick's Combined Heat and Power (CHP) plant, district heating system and BREEAM excellent Digilab.
18. The WCCP's visit to Daw Mill Colliery.
19. The State of the Region climate change event at the WM Regional Observatory.
20. The Warwickshire Police Authority nominating their own 'Climate Change Champion'.
21. A presentation on the WCCP to NBBC's Environment Overview & Scrutiny Committee.

Energy

22. Nuneaton & Bedworth Borough Council's installation of a 90 kW Combined Heat and Power (CHP) unit at the Pingles Leisure Centre in Nuneaton.



Warwickshire Climate Change Strategy Partnership

23. Nuneaton & Bedworth Borough Council's installation of a 50 kW Combined Heat and Power (CHP) unit at the Bedworth Leisure Centre.
24. Giving away copies of National Energy Action's DVD in 15 different languages "The Heat is On" promoting energy efficiency and affordable warmth.
25. The Encraft third interim report on the Warwick Wind Trials.
26. Marches Wood Energy Network wood fuel depot at Offchurch.
27. Nuneaton & Bedworth Borough Council's new low energy lighting and control systems at the Harefield Road and Rope Walk car parks.
28. The formation of the Warwickshire Energy Managers Forum.
29. The rising costs of gas and electricity at WCC.
30. Stratford based FuturEnergy's wind turbines.
31. Leamington resident, Janet Alty's photovoltaic (PV) panels.
32. Switch it Off campaign across Warwickshire, Coventry and Worcestershire with WCC, Coventry-CC, Worcestershire-CC, Central Networks, Act on Energy, Coventry Evening Telegraph, the Freight Best Practice Programme, the Heart of England Co-op, the Chamber of Commerce and many others. The campaign won the Energy Institute Communication Award 2008. Activities included: the family challenge, sustainability challenge, community give-aways, anti-idling, school energy check and the big switch-off. The Chief Exec of Act on Energy attendance at an ICLEI conference in Portugal to do a presentation on the SIO campaign. Work on the SIO campaign by WCC staff saw them nominated for WCC's first staff GEM Awards (Going the Extra Mile) for "Pursuing a Sustainable Environment".
33. The Warwick Action 21 Renewable Energy Club monthly meetings and community insulation event at Clapham Terrace Primary School.
34. Warwick based Ocean Power Technologies (OPT) development of its first PowerBuoy.
35. The launch of Warwickshire College and Plumb Centre (Wolseley Group) BPEC Solar Domestic Hot Water Heating Systems qualification.
36. St. John's church, Kenilworth actions to reduce its energy consumption.
37. The University of Warwick's installation of Combined Heat and Power (CHP).
38. Stratford library trial of loaning out Owl electricity display devices.
39. WCC's participation in the Carbon Trust pilot – Carbon Management Action Plan – Revisited (CMAP – R) programme. The identification and quantification of 99 potential projects.
40. WCC's updating of its Energy Policy overseen by a Corporate Energy Delivery Group and supported by an Energy in Education sub-group.
41. An energy audit at Kenilworth High School as part of the "Schools Sustainability Challenge".
42. The National Indicator (NI)185 / 194 which relate to CO₂ emissions from the Public Sector's own operations.
43. The work of the Climate Change Sub-Group of the Coventry, Warwickshire and Solihull Association of Planning Officers work on renewable energy resource mapping to provide the evidence base required for Planning Policy Statement 1 (PPS1).
44. The WCC biomass feasibility work with Carbon Trust appointed consultants Enviros.



Warwickshire Climate Change Strategy Partnership

45. The wood fuel supply chain work led by Godfrey-Payton.

Transport

46. A new WCC cycle route from south Leamington into town.
47. The creation of a green route for cyclists around Nuneaton town centre.
48. Beacon Energy's research into creating carbon neutral synthetic crude oil via a Fischer-Tropsch reaction route.
49. WCC's new fleet of mobile libraries, being smaller and lighter than previous ones are 7 to 8 miles per gallon more efficient.
50. WCC's "walk to school" campaign.
51. The use of electric vehicles at the University of Warwick.
52. WCC's bid to be involved in the Low Carbon Vehicle Procurement Programme.
53. Leamington based Encraft's completion of a carbon footprinting exercise with the Lloyd Fraser Group.
54. Greenwatt Technology's conference at Warwick HRI on the upgrading of biogas to bio-methane for the transportation sector.
55. Whichford and Ascott's new car share scheme.
56. The Air Fuel Synthesis Ltd plans, supported by WCCP steering group member, Professor Tony Marmont, to build a mini demonstration plant to demonstrate the concept of synthesizing fuel from renewable energy, water and carbon dioxide from the air.

Resource Efficiency

57. The WCC 'Recycle-Now' composting campaign.
58. Severn Trent's "Be Smart" award scheme at eco-schools.
59. The giving away of 'man-bags' by WCC to encourage men into using re-usable shopping bags.
60. Snitterfield Actioning Climate Change (SACC) group's reductions in community carbon emissions through recycling, buying green electricity and tree planting.
61. Recycling activities at Kenilworth St. John's Children's Centre.
62. The Warwickshire Waste Partnership's annual conference at Benn Hall in Rugby.
63. WCC's Love Food Hate Waste campaign.
64. Garden Organics' Composter Question Time drop in sessions.
65. Kenilworth School's proposed food show.

Adaptation

66. Campion Hills Allotment Association's plan to build a new sustainable centre.
67. North Warwickshire Borough Council and Waterloo Housing Association's plans to do an eco-refurbishment of local houses in Hill Top, near Arley.
68. The Wolseley Sustainable Building Centre in Leamington.
69. WDC's production of "Sustainable Buildings Supplementary Planning Document".
70. The building of a Power Academy in Rugby for Warwickshire College.
71. The work of the Long Marston Flood Team.
72. LAA NI 188 (planning to adapt to climate change) Climate Impact Sheets (snow & ice, wetter winters, heavy rain, heat waves, hotter drier



Warwickshire Climate Change Strategy Partnership

summers) completed for: Registration Services (WCC), Tourism Business Areas (WDC), Parks and Public Open Spaces (NBBC), Smallholdings (WCC), Adult Care Homes.

73. The regional NI 188 events.

74. The “Existing Buildings Survival Strategies” seminar at Arup Campus.

Communications and Education

75. Warwickshire County Council’s Citizen’s Panel – Wave 27 Report “Climate Change and the Energy We Use”. The questionnaire was distributed to all 1,031 members of the Citizen’s Panel, 567 completed questionnaires were returned, representing a 55% response rate.

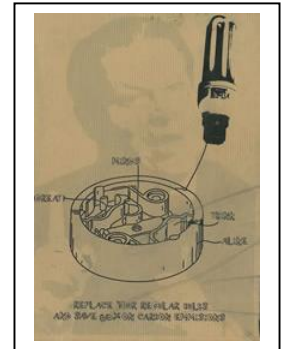
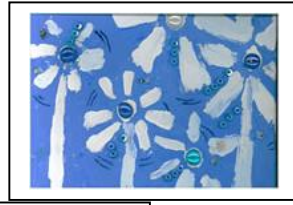
- a A response rate of over 60% was obtained from older residents (aged 45 years and older) and panel members from Stratford District, whilst response rates were slightly lower in the north of the County.
- b Most respondents (88%) agree that it is right that the UK Government and other politicians are right to be taking climate change so seriously.
- c The effects of climate change appear to concern most panel members, 76% are concerned about the effects on their own lives, whilst 90% are concerned about the effects on their children’s lives. This result indicates that concerns over climate change will grow in the future unless something is done to prevent it.
- d Most respondents (88%) agree that a share of Warwickshire’s electricity consumption should be generated within the county boundaries.
- e When considering planning proposals, most panel members (60%) believe that National / International issues and Local issues are as important as each other, of the remaining respondents, twice as many thought National / International ones to be more important than Local issues.
- f Many respondents have little faith in the information and advice they see, read and hear concerning developments in their local area. Just over one-half of panel members trust their Local Councillor (55%) and Council officials (53%). The most trusted source for information are University researchers / scientists (90% trust), whilst the least trusted source are private businesses (21%).
- g Respondents were given some background information about what target Warwickshire should set for generating electricity from renewable sources within its boundaries in 2015. Interestingly, it appears that many panel members think the County should set itself a more challenging target than is currently considered (5% of consumption).
- h Although larger-scale projects are most popular with respondents, the general opinion amongst panel members is that renewable energy projects should contain all three sizes of project, that is micro-scale projects, community scale projects and commercial scale projects.



Warwickshire Climate Change Strategy Partnership

- i Generally panel members appear to be willing to make changes to their lifestyle in order to help reduce carbon dioxide emissions. Turning off unnecessary lights / equipment and buying 'A' rated electrical appliances are the areas where respondents are most willing to take action. Of the respondents willing to take action, having renewable energy generating equipment installed at home is the one that respondents believe most difficult to achieve.
- j Panel members appear to have a good knowledge of 'carbon off-setting' schemes, 62% have heard of them, although only 5% have used them. Interest in 'carbon off-setting' amongst panel members who haven't used them is split, with 45% reporting an interest to find out more.

76. –The Climate Change / Environmental Art Challenge winners. Over 160 entries were received from schools and residents across the county. The art works were exhibited at Stratford Gallery throughout September and in various libraries across the county.



- 77. Eco-schools best practice meetings in North Warwickshire and Rugby areas.
- 78. The "Family Challenge", where you can borrow an electricity display device to find out how much electricity your home uses.
- 79. Encraft's development of fact sheets on Photovoltaics (PV) and wind turbines.
- 80. Film showings on the topic of climate change and peak oil at Stratford College – Pura Vida, The End of Suburbia etc.
- 81. Film showings on the topic of climate change and peak oil by the Leamington Transition Towns group – The Corporation, Who Killed the Electric Car, The Age of Stupid, Inconvenient Truth, The End of the Line etc.
- 82. Film showing of the Age of Stupid at Snitterfield Sports Club.
- 83. Talks given by WCC's Climate Change Team to community groups on how to have a greener Christmas.
- 84. Kenilworth School's: Green Day, bulb planting day, Universally Challenge quiz, energy efficiency evening, Governor energy talks, designing a wildlife garden and allotment and future plans to continue its sustainable journey.



Warwickshire Climate Change Strategy Partnership

85. The heats of the Universally Challenged quiz which saw teams of year 8 children from Warwickshire, Worcestershire and Coventry compete against each other. Chantry School in Worcester, Kenilworth School and Stoke Park in Coventry competed in the final and Chantry won.
86. The WCC Climate Change Teams' family "Sustainability Challenge" where a family are challenged to live a more sustainable life style for three months and given various challenges to undertake and keep a diary of progress.
87. WCC setting up a network of "Energy Advisors" across its buildings to promote energy efficiency and minimise WCC's energy liabilities.
88. In April 2009, the WCCP web pages received a total of 13,136 web hits.
89. The Climate Change Community Newsletter which goes to over 109 people every month.
90. The planning of a food show at Kenilworth High School and the mapping of local food webs.
91. The Warwickshire Education Business Partnership day at Kenilworth School to design an allotment and wildlife area.
92. WCC's Climate Change Team having a work experience student from Southam College for two weeks.
93. The development of a flyer on NI 186 and the 'One Tonne Challenge' for Parish and Town Councils.
94. Parish and Town Council 'One Tonne Challenge' talks (climate change / LAA NI 186 / peak oil / Transition Towns) delivered by WCC's Climate Change Team to: Radway PC, Harbury PC, Claverdon PC, Austrey PC, Bagington PC, Pillerton Priors PC, Beaudesert & Henley in Arden PC, Luddington PC, Rowington PC, Whatcote PC, Beausale PC, Wolvey PC, Ufton PC, Bidford PC, Stratford TC, North Warwickshire Area Committee of PC's, Studley PC, Southam TC, Fillongley PC, Ansley PC, Whitnash PC.
95. Plans for the Warwickshire Rural Community Council's "Sustainability and Climate Change in the Rural Community" event in September.
96. The Climate Change and Waste Minimisation event at Whitestone Infants School, Nuneaton.
97. The Secondary Schools energy meeting hosted by Kenilworth High School.
98. A North Warwickshire Schools energy meeting hosted by Gun Hill Primary School.
99. The completed community case study on LIFE (Long Itchington for the Environment).

