

hidden carers in warwickshire book • dvd • cd • reviews what exactly is an asbo? **working the nightshift** check out your shady past any volunteers? what's on guide stop the bullies **exam revision tips** drug advice website

who cares?

Spring 2005

WARWICKSHIRE

view



From nippers...

**YOUR SCHOOLS YOUR SOCIAL CARE YOUR LIBRARIES
YOUR BUSES YOUR FIRE & RESCUE YOUR RECYCLING
YOUR ROADS YOUR ARTS YOUR COUNTRY PARKS
YOUR PLANNING YOUR ROAD SAFETY YOUR TRADING
STANDARDS YOUR COUNTY COUNCIL**

...to slippers



Your Life. Your Vote. Use it.

on Thursday 5 May
www.warwickshire.gov.uk/election



*Working for
Warwickshire*



p14

Warwickshire wildlife



Do you have a skeleton in the cupboard?

p18

viewcontents



p6

Cover story; find out who cares and how we can help.

Warwickshire news 4-5

Caring for the carers 6-7

You'll be surprised to see how many people care

Help help help? 8-9

Exam tips, drug action team, fire safety, beat the bullies

Working the nightshift 10-11

A typical night for an Emergency Duty Officer

Any volunteers? 13

An inspiring story of voluntary work

Warwick-on-sea? 14

Coastal plants show up

Media review 15-17

What's available at your local library

Shady past? 18-19

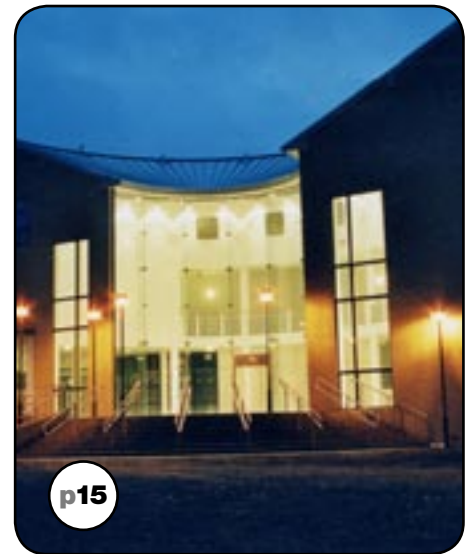
Check your family history

What exactly is an ASBO? 20

A simple explanation

Competition 21

What's on guide 22-23



p15

Latest book, film and CD reviews from the staff at Rugby library.



p10

What's a typical social worker? Read this for an eye-opening experience.



p20

What exactly is an ASBO? Here's a simple, straightforward explanation.



viewnews

£5.4 million performance bonus

A financial pat on the back amounting to £5.4m is being awarded to Warwickshire County Council for its achievements in meeting and then exceeding government targets for improvement.

The extra money was awarded under the Local Public Service Agreement, which allows councils to agree performance targets with the government and earn a reward for meeting them.

Warwickshire County Council agreed 15 new targets, above the normal national requirements, that would trigger extra cash if they were met over a three-year period.

The county council met 60 per cent of its targets, and the grant from the Office of the Deputy Prime Minister has been invested in all services across the county, including schools, within this year's budget.

Ian Caulfield, Chief Executive of Warwickshire County Council, said: "This grant reflects the council's constant drive to improve standards and achieve excellence."

The better services and standards achieved between 2001 and 2003 in Warwickshire, included:

- **higher pupil attainment in Maths, English and Science at Key Stage 3.**
- **more GCSEs at grades A to C.**
- **more child minders, child care places and 3-year-olds in pre-school.**
- **a reduction in unauthorised absences from school.**
- **an increase in disabled people in adult education.**
- **an increase in adoption and secure placements for vulnerable children.**
- **a reduction in road casualties.**
- **an increase in household waste recycling.**
- **an increase in the cost effectiveness of all county council services.**

Hooked on classics



Latest blockbusters have failed to impress when it comes to picking out the top five wonders of the written world. Rugby's lovers of literature have nominated their top 5 reads as part of Rugby Library's 5th birthday celebrations. A huge range of books were nominated as people's favourites, from childhood classics such as Winnie the Pooh by AA Milne to recent blockbusters like Dan Brown's The Da Vinci Code. But topping the charts, after being enjoyed for almost 200 years, was Jane Austen's Pride and Prejudice. This was followed by Rebecca by Daphne Du Maurier; Atonement by Ian McEwan; The Hitchhikers Guide To the Galaxy by Douglas Adams and 1984 by George Orwell.

Walk this way



Work is underway on a £1.5 million project to make the centre of Leamington more pedestrian friendly.

The Leamington Urban Mixed Priority (or LUMP) scheme is the result of lengthy consultation with residents, traders and other key stakeholders to find the best solution for the town centre. The scheme is partly funded by central Government and is part of a national initiative intended to make town centres safer for people walking and cycling.

The scheme – which covers the Parade, Victoria Terrace and Bath Street – involves widening footways, raising platforms at pedestrian crossing points, updating traffic signals, installing new signals at the junction of the Parade and Clarendon Avenue, reducing street furniture and road signs, and creating a 20 mph speed limit for cars. The work is likely to be completed in six months.

Wonderwall

Memories are coming to life as work begins on an art project to create a collage of experiences from the last 100 years. A call is going out to people living in and around the Stratford area to contact a home for older people and share their memories and experiences by contributing images.

These reminiscences will then be merged with those of the residents of the home to create a wall collage for Lower Meadow Home for Older People in Drayton Avenue in Stratford.

A Warwickshire Social Services Arts Grant of £1,715 has been awarded to Lower Meadow to create a 'Memory Wall Collage', with a further £600 being provided by the home's welfare fund.

Work is underway on planning the collage with a professional artist. It should be completed during the summer.

Care Home Manager Paul Gaskell said: "I'm delighted we have been awarded the funding to go ahead with this collage which will help promote a positive and complete picture of older people, not just as service users."

Memories focus on everything from 1900 through to the present day, including comics, work, music, football, food and fashion.



Heather Sims, Charlie Pryor, Paul Gaskell.

To contact the home simply call in with any images and ask for Manager Paul Gaskell, or contact him on 01789 268522.

Once the project is completed we'll be featuring the final collage in a future issue of Warwickshire View.

viewbrief

Bright spark scoops award

County Fire Officer William Brown has announced this year's Young Firefighter of The Year as Tom Huckfield from Shipston Young Firefighters Association (YFA).



Simpler registration

Warwickshire residents who are registering births, deaths or marriages will shortly benefit from changes to the Registration Service. As well as a reduction in the number of districts from five to three, a resident will be able to register a birth or death at any office in the district where the event occurred and receive a copy birth or death certificate at the time of registration. The only exception is that births and deaths cannot be registered at the Warwick office.

The future's orange



Thousands of orange folders have been delivered to older people across Warwickshire as part of an innovative new project.

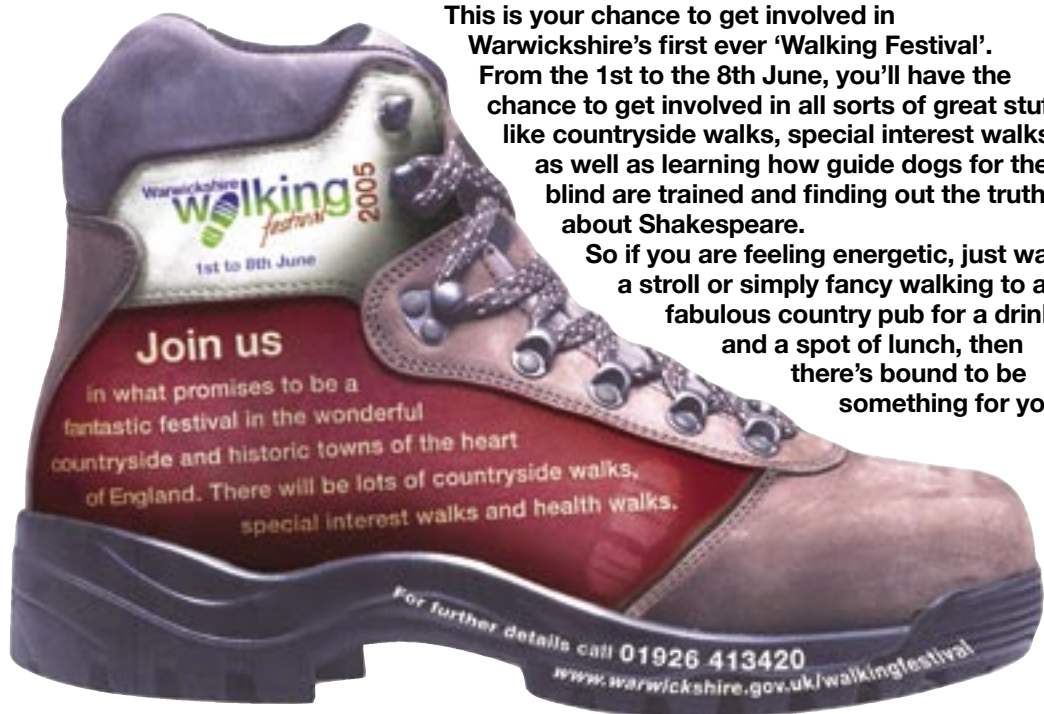
The aim is to dramatically reduce the barrage of questions older people face as they move through 'the system'.

By bringing information held by organisations such as health and Social Services together in one pack, the orange folders should radically reduce the risks older people face as they move between agencies.

These boots are made for walking

This is your chance to get involved in Warwickshire's first ever 'Walking Festival'. From the 1st to the 8th June, you'll have the chance to get involved in all sorts of great stuff like countryside walks, special interest walks as well as learning how guide dogs for the blind are trained and finding out the truth about Shakespeare.

So if you are feeling energetic, just want a stroll or simply fancy walking to a fabulous country pub for a drink and a spot of lunch, then there's bound to be something for you.





who cares?

Thousands of men and women, young and old, throughout Warwickshire, provide hours of care for a loved one. Don't struggle on alone - there is help and support available.

Thousands of 'hidden' carers are living in Warwickshire, every day putting many hours into looking after a loved one, unaware of the support available.

Many carers can feel pressured, isolated and alone in their role of looking after a relative, neighbour or friend who has needs as a result of a long-term illness, disability or substance abuse.

Quite often the level of commitment goes way beyond what many of us may consider a 'normal' working week.

This relies on a sense of responsibility for, and commitment to, the person driven by feelings of love, duty or concern. Many carers have little or no support to help them with their caring. This can be a huge responsibility for many people to shoulder alone.

About one in six people living in Warwickshire are carers. With an ageing population this number will rise to three in five within the next couple of decades.

Warwickshire County Council's Social Services Department has launched a

new support service to meet the needs of carers. In north Warwickshire this support comes from Guideposts Carers' Support Service (024 7638 5888), while in south Warwickshire it comes from South Warwickshire Carers' Support Service (01926 485486).

The 2001 Census identified more than 53,000 carers in Warwickshire. Of these more than 38,000 provide between 1-19 hours of care per week, around 5,000 provide between 20-49 hours of care per week and more than 9,000 carers provide 50 or more hours of care per week.

Contact Info

North Warwickshire

Guideposts Carers' Support Service

024 7638 5888

South Warwickshire

South Warwickshire Carers' Support Service

01926 485486



Rashida Ebrahim Suleman, 36,
Nuneaton.

I have been a carer for the past 15 years for my mother-in-law who is bed-bound for the vast majority of the time with severe arthritis.

My husband is great at helping when he can, and his support means that I am now able to get out of the house every now and again to get to sessions where I can meet with other carers and discuss the issues we all live through.

I'm sure people do not realise how alone you can feel in a house that is literally full, with my mother-in-law and four children to look after.

It doesn't have to be a struggle alone though, there is always a caring voice at the end of the phone from a variety of caring organisations, such as Guideposts in north Warwickshire, or Age Concern.

I could be very lonely and isolated in what I do, just as many of thousands are in Warwickshire, but thankfully with the support of my husband and others, this is not the case.



Malcolm Macmillan, 82,
Shipston on Stour.

I've been caring for my wife for 6 years.

I used to help get her up and dressed and take care of the house, shopping and cooking.

She has dementia which has been having more and more impact on her behaviour over this time.

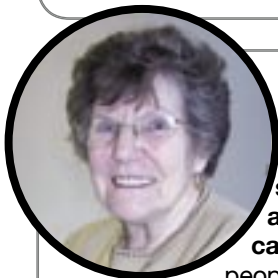
Earlier in the year this became too much for me to cope with and she was admitted to a residential home although sadly the nearest home available was in Redditch in Worcestershire which means a 100 mile round trip to visit her. We have been together for 52 years and

this feels like a bereavement to me. I try to go there to take her out for a day every week and also visit midweek. At present I'm travelling about 600 miles a month to do this.

I'm very fortunate in that I have a supportive daughter and son who live reasonably close.

The South Warwickshire Carers Support Service has been such a help to me. The carers meetings are a great source of support and the various support workers have been so helpful and caring. If they haven't known the answer to something I've asked they always find out and come back to me.

All I want is to find a place in a home for my wife which is nearer to me so that I can see her as often as I want.



Gwen Johnson, 77,
Atherstone.

I'm never one to seek sympathy or attention for my caring, but I think

people should be aware of the levels of support out there and not to feel alone.

My daughter, who is 49, has Down's Syndrome and for many years has needed my constant attention. This became hard in recent years when my now deceased husband became increasingly ill. Over several years he went through two heart bypasses and two strokes.

I volunteered with Meals on Wheels for 15 years and it was while doing this that

my eyes were opened to how trapped and alone many people can feel. Arriving at homes to find people saying 'welcome to my prison'.

Clubs aren't for everyone, but we all need conversation. That's why the support of organisations like Guideposts in north Warwickshire is so crucial. Just having a voice at the end of the phone can be all that is needed.

Sometimes I will spend all weekend caring for my daughter, and while I love her very much, it's great at the end of the weekend to meet with people and have a proper conversation.

I can only imagine what it must be like caring every day in isolation and not seeking any kind of support. It's not a case of feeling sorry for yourself, it's just taking advantage of the help available.

Drugs action team

For anyone with concerns about the effects of drugs, Warwickshire Drug Action Team's (WDAT) website has been proving an invaluable tool for its many visitors.

The site, which was launched in 2004, contains information on symptoms and effects of some of the most commonly misused substances and gives details about where to go to seek help.

The site is user friendly, having two levels. One is aimed at younger surfers and features advice on what drugs look like, what they do to the user and what the harmful effects can be.

A second level, aimed at parents and professional organisations, details the work that is going on around the county aimed at steering young people away from drugs and directs surfers towards organisations who work at minimising the harm of drugs use.

Kit Leck, WDAT commissioning manager says: "Our primary aim is to ensure that high quality drugs services are available throughout Warwickshire. People can use this site to find out what kind of treatment is available and how to access it."



help help help



The exam season is upon us again and you can drastically improve your chances if you go in well prepared. Make sure you know how much time you will have in the exam, what kind of questions you will be asked, and how many there will be. You can then make yourself a basic timetable beforehand which will save valuable time in the exam.

Take this as an example. If you have a two hour English exam and it has three questions you can divide it up like this: 5 minutes to read through the paper 10-15 minutes to make

notes and plan your answers. Split each question that you're going to answer into parts and sketch out how you will be answering it. 30 minutes for each question, 10 minutes to read through your answers and make any necessary amendments.

When you're doing an exam that involves long answers - for example English; it's a good idea to leave some space at the end of the answer so you can add any additional comments or arguments that might come to mind when you re-read your paper at the end of the exam. Don't spend all

it's not all mascots



FREE Fire safety checks

To qualify for a free Home Fire Safety Check you will need to meet one or more of the following criteria:

- You are over 65 years old.
- You are on a low income.
- You are registered disabled.
- You have young children under the age of four.
- You are a single parent.
- You have had a fire in your home in the last 12 months.

For further information contact:

Nuneaton
024 7638 3131

North Warwickshire
01675 462007

Rugby
01788 572727

Warwick
01926 423231

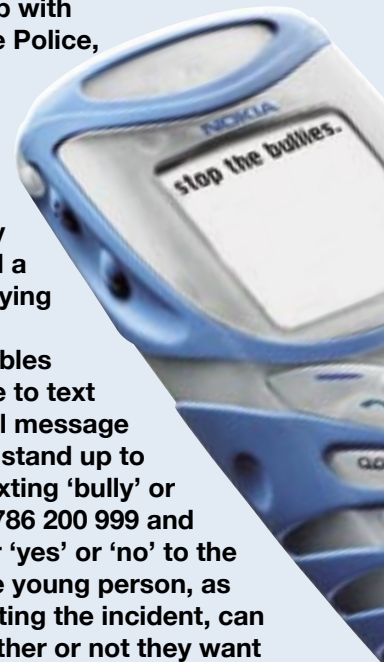
Stratford
01789 293271

Beat the bullies

Warwickshire County Council in partnership with Warwickshire Police,

Positive about Young People and the Stagecoach bus company has launched a new anti-bullying service.

text2talk enables young people to text a confidential message to help them stand up to bullies. By texting 'bully' or 'racist' to 07786 200 999 and adding either 'yes' or 'no' to the message, the young person, as well as reporting the incident, can indicate whether or not they want any further contact. Every message is acknowledged immediately and callback contact (if requested) is guaranteed within five days. The service has got off to a very encouraging start with scores of youngsters getting in touch.



Don't let the bullies get away with it. If you're being bullied or subjected to racist behaviour simply text the number below. Your text message will be treated in complete confidence.

your time on questions you know the answer to. Remember that you have to answer all the questions, and you will get a worse mark for answering some questions supremely well and some not at all.

And make sure your writing is legible, it's worth taking a little extra time making sure your work is neat enough for the examiner to be able to read it. Try to avoid



spelling mistakes too! Remember to leave enough time at the end so you can spend ten minutes going through your answers and correcting any obvious mistakes.

If you've revised thoroughly, done your homework and know exactly what to expect, your mates won't be able to stand outside the exam room winding you up!

and mints

text2talk anti bullying service
simply text:

07786 200 999

another typical nights shift



What's your impression of social workers? Read about a single night in the life of an Emergency Duty Officer from Warwickshire Social Services and prepare to think again.

5.00pm Emergency duty officer receives several faxes (at home) during the day about matters that might arise 'out of hours'.



5.31pm: Call from Coventry police. There's been a fight between a mother and her 15-year-old daughter Mandy* on a service station forecourt. Child now at police station as mother refuses to have her home. Daughter now alleging assault by mother who lives near Rugby.

6.12pm: Phone call from very frustrated Nuneaton mother who states she can no longer cope with her unruly 14-year-old son and wants him removed from home immediately. Advise mother to seek help from local office in morning. No further action taken by EDO but full report submitted to relevant children's team by fax.



6.15pm: Receive pager message re 14-year-old John* said to be drunk on alcopops and retained by Rugby police. Agree to attend station later in evening when youth has sobered up.



6.45pm: Advised by South Warwickshire Children's Team Manager that a teenage boy is refusing to accept accommodation, as offered by the department, following strained relations between himself and family and that he is likely to abscond. We need to provide an emergency placement if required.

7.45pm: Arrive at The Chace police station. Brief interview with Mandy* who is still distressed after fight with mother. Police doctor also present. Injuries superficial and evidently caused in fight. Child reluctant to return home but agrees to my visiting her mother...while she sits in my car.

8.15pm: Phone call from concerned adult daughter regarding physical care of her elderly father. Matter referred to evening home care supervisor on duty in Leamington.

8.30pm: Take Mandy to mother's in rural north-east Warwickshire. Leave child in car while negotiating with mother and step-father. Both refuse to have child back and agree to my accommodating her overnight. Mother still extremely angry and concerned about daughter's ongoing association with an older boy. Daughter also adamant that she will not return home at this stage. Mother counter-alleges assault by daughter.



8.45pm: Drive Mandy to Rugby police station to enable me to interview 14-year-old boy said to be drunk on alcopop. Youth now appears to be sober. Family well known to Social Services.

Unsupported mother finding it difficult to cope with teenager.

9.13pm: Misdirected referral. Disabled lady in Bristol complaining that her home alarm system is malfunctioning. Refer her to her local emergency duty team. BT's directory enquiries thought Warwickshire could help!

9.21pm: Child Protection Register enquiry by hospital accident and emergency department. Five-year-old girl with head injury caused by iron bar – accidental? Family not previously known to Social Services.



9.45pm: Drive drunken boy John* home but he runs off at garden gate. Continue on journey with Mandy to emergency duty team office in Atherstone in order to arrange a foster placement.

11pm: Place above child in emergency foster placement in Nuneaton (there being no places available in child's own home locality).



11.10pm: Frustrated North Warwickshire foster mother asking for practical support in looking after her foster child in the morning – due to other commitments. (Not really an emergency but problems in communicating with own social worker early next day).

11.23pm: Mentally disturbed man reported by private care establishment in Rugby as missing after having run amok in garden. Check police aware and searching.

11.30pm: Nuneaton foster parents reports 12-year-old male foster child as missing. Last seen at 1pm! (Child restored to placement at 12am).

11.50pm: Child protection enquiry via police following violent domestic dispute between parents in Leamington area involving 14-year-old son not previously known to department. No actions required overnight.



Midnight: Report compilation and faxing at home base. Snatch sleep on settee.

1.58am: Fourteen-year-old Warwick girl who has been missing from home has returned drunk. Mother has called police who then call me for background information and advice.



2.55am: Parents refusing to allow above child to remain at home. Police take the daughter to local police station to sober up and arrange overnight placement.

3.15am: Arrive at Leamington police station. Girl now semi-sober. Arranged overnight placement for her in Wellesbourne.

5.15am: Take child to placement. (See dawn rise).

5.26am: Three juveniles in custody in Leamington police station for alleged theft from store. Agree no call-out required as they need sleep! Refer to next shift starting at 6am.

5.47am: Return home. Continued compiling and faxing reports until...

6.30am: Another day, another dollar!

** Names have been changed and stock photos used.*

Further information

Contact:

**Chris Mountford on 01926 413516
Emergency Duty Team Ops. Manager**



Melvin Evans (front) and other Café Puccino staff.

welcome to café puccino

An enterprising new business, inspired and driven by adults with learning and physical disabilities has been launched and becomes one of just a handful in Britain.

Café Puccino in Station Street, Atherstone, provides shoppers and visitors with a premier café, offering light snacks and an array of hot drink refreshments. Right nextdoor to the café is the Shortcrust catering business, again run by adults with disabilities. This provides a full catering facility for everything from business conferences to weddings. Both businesses have grown from a pilot run at the Shortwoods Centre in Dordon.

Funding provided by Warwickshire County Council (£12,500) The Heart of England Community Foundation (£10,000) and sums from Derbyshire Building Society, Tamworth Co-operative Society and Polesworth Baptist Church, made the pilot a reality.

Have you heard of Buster Werkenbak?

Buster Werkenbak is a new service which will enable people to access employment sites which operate a shift system. The service operates from the early hours of the morning until late into the night. There is no set timetable, users simply telephone and book their seat for just £1. This unique service will enable people with restricted job opportunities in their local vicinity to access employment at other sites and broaden their career horizons.



Call 0121 776 8880
for further details

For example, if you've thought about working at Hams Hall, the Airport, the NEC etc - and there are jobs available - but you have been prevented from applying in the past because you couldn't get there, then Buster Werkenback may be the answer.

We can take you to an interview and once you get the job, we can continue to take you to your place of work.

The service is open to residents of Kingsbury, Piccadilly, Hurley, Wood End, Water Orton, Coleshill and Curdworth.

laptops and language

The battle to learn English and become computer literate is being won with some great results at a day centre in Nuneaton.

Both staff and service users at the Edward Street Day Centre have been awarded with Certificates of Merit by the National Open College Network for their work in learning English and getting to grips with laptop computing.

Fully funded by Warwickshire Social Services, the centre has become a focal point for an array of partnership working, including North Warwickshire Primary Care Trust, Warwickshire Police, the Probation Service and many more.

The centre specialises in focussing on many needs of its service users, ranging from their dietary and cultural needs, through to their social and linguistic

requirements.

Certificates were presented to Farida Sheikh (staff), Zaynab Patel (staff), Saeeda Qureshi (service user) and Mehraj Din (service user). A further eight service users are working towards their certificate.

The centre operates from Monday to Thursday and is also providing ten to 12 ready meals each day to service users who cannot make it to the centre.

Ikraam Haque, Co-ordinator of Edward Street Day Centre, said: "Many of the people working towards this certificate are aged between 65 and 75. It is no small achievement to both be learning English and discovering how to use a laptop at the same time, I'm very proud of their work."



Mehraj Din proudly displays her certificates.



Darrel Wood in action at the Rowan Centre.
Warwickshire County Council are the core funders for Volunteer Centre North Warwickshire.

any volunteers?

Do you have a special talent, a burning ambition or simply a desire to try something new? The chances are that you don't get an opportunity to use your hidden talents or realise your ambitions in your every day working life.

Volunteer Centre North Warwickshire can't promise to turn you into the next Pop Idol or a top Premiership football team manager. It can however, help you find a part in a local theatre group or help you have a go at football coaching. Giving up some of your spare time to work as a volunteer can change your life. That's what happened to Darrel Wood from Warton, North Warwickshire.

Darrel, 36, was made redundant after ten years in his job as a laboratory technician. With his personal and professional confidence dented, he found himself 'heading downhill' as he describes it and was later diagnosed with 'social phobia'. With uncertainty over the value of his abilities and skills he found it difficult to find a route back into employment. His brother suggested he visit the Volunteer Centre North Warwickshire.

During a first informal chat one of the Volunteer Centre workers identified Darrel's key skills, talents and interests. Darrel was then provided with a range of different ways in which he could donate his spare time to local groups.

Darrel chose to work as a volunteer at the Rowan Centre in Atherstone. A centre that concentrates its efforts on enabling disabled people to live independently. He volunteered to help with the photography group and to teach service users how to use

the internet. The experience was a revelation.

Darrel discovered new skills and developed a talent for activities and work that he had never considered trying before.

Darrel says "Although the Volunteer Centre had explained what I would be expected to do as a volunteer, and what I could expect from the organisation, I was still really nervous on the first day".

After two years as a volunteer Darrel successfully applied for a permanent job as the Rowan Centre's Support Worker/ Driver. He now works full time at the centre and thoroughly enjoys his job. "If I hadn't visited the Volunteer Centre I would never have known I had these skills and could do this job and would never have met all the great people I see every day".

This year has been designated by the Chancellor of the Exchequer, 'Year of the Volunteer' and each month has a different theme. Volunteer Centre North Warwickshire has hundreds of opportunities all over North Warwickshire and strives to promote the value of volunteering to the individual when they give their time to the local community.

To find out more call 01827 717073, or email: info@nwvb.org.uk

“ I would never have known I had these skills... ”



Things are looking up - Darrel Wood (right)



Warwickshire County Council's Keeper of Natural History, Steven Falk beside the c600 year old Stoneleigh Oak, one of the oldest trees in the county.

welcome to warwick-on-sea?



Bee Orchid (Photo J.Roberts)

Seaside plants, normally only found at seaside resorts, have been discovered in the heart of Warwickshire during a countywide survey by a team of both amateur and professional botanists.

Plants such as the Sea-spurrey, traditionally only found at the coast, are growing in Warwickshire. This is believed to be down to the salt used during the gritting of the county's roads during freezing conditions.

There have also been some shocks for the plant experts, including the discovery that the Dutch Elm tree is now extinct in Warwickshire. A survey 15 years earlier recorded the tree at just one site in the county - this tree has now gone.

The latest study of Warwickshire vegetation was conducted over the last two years as part of a national survey. It focused on seven areas studied in 1987 to assess which plants were still present, which had gone and which were new.

Almost a third of all of Warwickshire's recorded plant life was found at the sites.

Over 50 species of plant identified in the 1987 survey were found to be missing in the latest study. A number of possible reasons have been put forward including the use of pesticides, loss of some hedgerows and ancient woodlands.

On a positive note, three species of wild orchid and several rare cornfield flowers (including one that was thought to be extinct in Warwickshire) have been discovered alive and well within the county boundaries.

Twelve plant hunters took part in the latest study which was supported by Warwickshire County Council's Museum Service and the Botanical Society of the British Isles.

For further information see the natural history pages on our website at: www.warwickshire.gov.uk

Warwickshire County Council Libraries offer books, talking books, DVDs, videos and CDs as well as free broadband internet access.

Turn the page for reviews of the latest books, CDs and DVDs then pop along to your local library - you'll be surprised at the range of stuff on offer.

library focus

Rugby





Jen Dunn, (left) Reader Development & Stock Librarian from Rugby Library opens up the wonderful world of graphic novels, whilst her colleagues offer a selection of personal reviews of books, film and music.

take a fresh look at the novel

Buddha by Osamu Tezuka • **In the shadow of no towers** by Art Spiegelman • **Subgurlz** by Jennifer Camper

Graphic novels are great if you are looking for a fast, fresh, and funky read. Here are some that I've enjoyed recently and there's not a single tight-clad, muscle-bound bloke in them – I promise!

Osamu Tezuka is known as 'The Father of Manga' and the current re-issues of his **Buddha** series in eight beautiful hardback volumes show why. Originally printed in the 1970s and 80s Tezuka's artwork draws as much on the traditional Japanese woodblock style as it does on cartoons and animation. The cute wide-eyed characters are quite Disneyesque but the storyline about the events surrounding the birth of Siddhartha are anything but simplistic.

Also recommended

Gemma Boverly by Posy Simmonds

American Splendour by Harvey Pekar

Road to Perdition by Max Allen Collins

Battle Royale by Kaushon Takami

The Fixer by Joe Sacco

This may make the series sound a little dry but there are enough fights and childish toilet humour to keep the balance right. Very highly recommended to anyone who is interested in Buddhism or in the development of manga comics.

The glowing bones of the World Trade Center are a recurring image in Art Spiegelman's new collection, **In the Shadow of No Towers**. On the morning of September 11 2001 he was rushing across New York with his wife to find their daughter whose school was at the foot of the towers. This highly personal account of the day is interspersed with Spiegelman's subsequent musings about the hijacking. Although this is a must read for anyone who is a fan of political cartoons or enjoys the work of Michael Moore it may disappoint readers who are expecting another Maus or outrage people who don't agree with the politics!

After all this non-fiction why not relax with Jennifer Camper's excellent

subGURLZ – a superhero comic with a twist. This is the unlikely story of three mutant lesbians who live in a toxic labyrinth of subway tunnels and emerge to do good or evil; depending on whose side you are on! There are the adventures of Swizzle, who keeps accidentally killing people due to her incredible muscle power; Liver, who survives on a diet of alcohol, nicotine and toxic substances and can bring people back from the dead; and Byte, who is so clever no hair can grow on her head. These make hilarious reading and will appeal to fans of Alison Bechdel's 'Dykes to Watch Out For' cartoon strips.

Library Facts

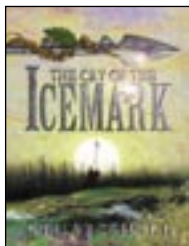
Rugby Library, a state-of-the-art partnership building with Rugby Borough Council's Art Gallery & Museum, celebrated its fifth anniversary on 1 March 2005.

Rugby Library is the busiest library in Warwickshire welcoming 654,000 visitors, issuing 481,825 items, providing 66,100 free internet sessions and answering 136,869 enquiries a year.

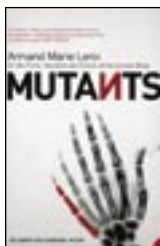
Contact Info

www.warwickshire.gov.uk/libraries
or call (01926) 410410

5 more books to look out for at the Library



Stuart Hill
The Cry of the Icemark
Thirrin Freer Strong in the Arm Lindensheid is a young girl with too many names and too many problems and during the course of this epic fantasy novel she gathers more of both. Following her father's heroic death in battle fourteen-year-old Thirrin finds herself queen of a small nation beset by the Romanesque war machine of the PolyPontian Empire. Along with a host of unlikely and increasingly bizarre allies she must try to take the fight to the enemy. Hill writes epic confrontations and domestic hearth scenes with the same assured tone. (Age group 12+)
Carl Cross, Librarian.



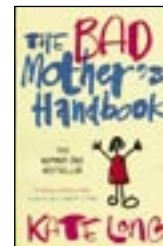
Armand Marie Leroi
Mutants
This is a fascinating book, which manages to quote from medical papers and still be immensely readable. I found the section on ageing particularly hopeful for future longevity, and at the other end of the life cycle, his description of the development of an embryo was more exciting than any best selling novel. His unsentimental and in places moving style, made this a book I did not want to put down. But I shall never look at a person with red hair in quite the same way again!
Gill Spencer, Library Assistant.



Dick Porter
The White Stripes: 21st Century Blues
Mojo magazine describe the White Stripes as 'the hottest chunk of screaming yahoo to kick rock's sorry arse into gear since Nirvana.' In this biography, Dick Porter explores the truth behind the quirky couple - are they brother and sister or are they ex-husband and wife? What are the roots of Jack's austere puritanism and obsessions with truth and death? And why do they insist on those matching red-and-white colour schemes? A must read for all true fans!
Thom Petrescu, Library Customer



Audrey Niffenegger
The Time Traveler's Wife
I don't read fiction, but something in the description on the book jacket intrigued me. Ten minutes into the book I knew that no-one would get tea that night. Henry is a time traveller, but has no choice about when he travels or where he travels to. The only certainty is that he will meet Clare each time he travels forwards and backwards in time. Their love for each other is very much the central theme of the book, but don't expect any mush, what you get is a well-written and intriguing modern love story.
Chris MacLean, Librarian.



Kate Long
The Bad Mother's Handbook
In 1997 Tony Blair became Prime Minister and Princess Diana died. It was also a momentous year for Charlotte, Karen and Nan, three generations of one family. Charlotte gets pregnant whilst still at school. This displeases Karen who wanted much better for her daughter. Nan, who has dementia, confuses episodes from both her own and her daughter's past with the present predicament of her grand-daughter. Poignant, sensitive and yet sometimes very funny, this is Kate Long's first novel. I can't wait for the next.
Lynda Carnes, Librarian



DVD & Video to look out for at the Library

Harry Potter & the Prisoner of Azkaban

Having read and loved the book, I couldn't wait to see the third film in the Harry Potter series. I was not disappointed. A wonderful cast, including the excellent David Thewlis as Professor Lupin and a suitably edgy Gary Oldman as Sirius Black, join the regular cast of youngsters who are steadily improving acting-wise with each film. The film itself is a magical and sometimes frightening experience with the Dementors brought chillingly to life. Well worth watching even if you haven't seen the first two films.
Joanne Roberts, Librarian

New Arrivals

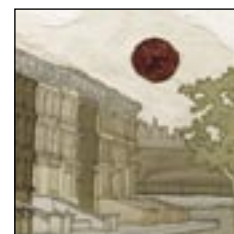
Collateral • Catwoman • Terminal • The Bourne Supremacy • Whole Ten Yards • I'm with Lucy • Dodgeball • The Alamo

CD Review

I'm wide awake, it's morning • Bright Eyes

This is Bright Eyes 6th album and it's a good 'un. Lead Conor Oberst combines country twang, folk guitar and indie lyrics resulting in 10 upbeat and energetic tracks. Original and infectious, this album is certainly worth a listen. You'll probably like this if you like: Granddaddy (but want more energy), Belle and Sebastian (but want more noise), and The Delgados (but want less pop).

Anna Bryan, Senior Library Assistant.





To find out more visit www.warwickshire.gov.uk/countyrecordoffice or call 01926 738959

rogues

villains and vagabonds could be lurking in family trees right here in Warwickshire if budding Hercule Poirots are willing to turn detective and track down the skeletons in their ancestral history closets.

Hunting out fascinating details from the era of great grandparents and even earlier has always brought out the detective in people, and thanks to a new resource even more colour can be added to the lives of previous generations.

Who knows what you might find about your family when you start to piece together the jigsaw that forms your background. So who do you think you are?

Illegal activities of ancestors can now be uncovered online thanks to Warwickshire County Record Office.

Through the Calendars of Prisoners database anyone can log on, input their name and find out if their family

members were accused of a crime, or a victim of crime in the county in the 19th century.

The database records those held in the county prisons (at Warwick, Birmingham and Coventry) for trial at the Courts of Assize and at the Quarter Sessions courts held in Warwick between 1800 and 1900 (with a few gaps).

The Calendars do not just record the accused – the database also gives details of the victims. In every case the full name of the victim is listed as well as the accused. Further details held on the accused are age, occupation, crime and sentence and the degree of literacy they had.

Information held on the victims includes where they lived and details of the crime committed against them.

When you have tracked down your wayward ancestor, follow up with a visit to the Record Office to find out what the local media reported on the crime. Again whether you are interested in the accused or the victim many of the newspaper reports of the day contain fascinating information and pictures.

Also held at the Record Office is the Book of Known Thieves, which overlaps the Calendars by five years running from 1895 – 1910. This provides ‘mugshot’ pictures as well as other information on those known to the Aston Division of Warwickshire Constabulary.

And it’s not just people living in

Warwickshire who are taking advantage of the new resource, it is also winning international praise from those looking to track down their ancestry. Mrs Lloyd from Sydney, Australia, used the database to try and find out more about convicts in a family and said: “Thank you for putting such a wonderful resource online.”

With the popularity of programmes such as the BBC’s ‘Who do you think you are?’ there has never been a better time to delve into the resources provided by Warwickshire County Record Office.

All these resources are a fantastic way of finding out more about your family history and are completely free. Log on to www.warwickshire.gov.uk/countyrecordoffice or call 01926 738959 to find out more.



Irene Potter, one of the many willing volunteers who have helped to compile the database. The main pic (right) shows the book of known thieves.



do you have a
shady past?

The County Record Office holds a wealth of fascinating historical records. But did you know you could check out your past and see if there are any skeletons lurking in the cupboard?





what exactly is an

ASBO?

The term 'Anti-Social Behaviour Order' is all over the news these days, but what does it really mean?

Ever suffered from neighbours who play music loudly into the night? Or groups of young people swearing at you as you pass by? That could be changing for good now with the advent of the ASBO.

The ASBO is society's secret weapon to stamp out the kind of behaviour that makes people's lives miserable. So what exactly is an Anti Social Behaviour Order?

An ASBO can be issued against anyone over the age of ten who has acted anti-socially and where the community needs to be protected from their acts in future. Local authorities, police forces and registered social landlords can all lead an order.

The order prohibits the offender from specific anti-social acts or entering



areas where their behaviour has caused offence. Although effective for a minimum of two years, the orders are not criminal penalties and are not intended to punish the offender.

If the problems continue, and the offender breaches the order, criminal proceedings and penalties apply.

Breach proceedings are heard in the

magistrates' court and may be referred to the Crown Court. Sentences vary from Crown Court to Magistrates Court but a serious breach can lead to a five year prison sentence or a fine of up to £5,000.

For juveniles, the maximum sentence for a breach is a 24 month detention and training order – 12 months custodial and 12 months spent in the community.

Paul Littler, the county's anti-social behaviour co-ordinator, says: "ASBOs send out a strong message and provide an effective tool in stamping out the behaviour that affects the quality of life of the vast majority of people."

For more information call 01926 410410.



review competition

are you under 18?

Here's your chance to win £25 worth of free CD, DVD or video rentals from your local library.

Simply send in a short review (around 150 - 200 words) of any book CD, DVD or video that you have borrowed from your local library.

We'll pick the best three reviews and award prizes of credits on loans at your library - first prize is £25, second £15 and third £10.

To enter you need to be under 18 as of 1 August 2005.

Your entries must reach us by 29 July at the latest and you can enter by emailing:

viewcompetition@warwickshire.gov.uk or by post to the address on the back cover.

You'll need to include your review, date of birth, name and contact telephone number. Good luck!

luxury health club competition winner



Congratulations to Katie Clarke, 21, (above right) from Warwick who wins a year's membership at the Esporta Warwickshire Health & Fitness Club, along with a personal training plan, esporta tracksuit and bag.

Katie's winning entry was selected from a host of high quality entries proving that the people of Warwickshire remain true to their literary heritage.

Katie's entry (shown right) explains why she loves living in Warwickshire so much.

The standard of entries was so impressive that we'll be featuring some of the other literary pieces in the next issue of Warwickshire View.

“ The Bard wrote, ‘Something is rotten in the state of Denmark’ but not in this fair county of Warwickshire. For fair Warwickshire is Shakespeare Country! Wander through rooms lavishly used to entertain Queen Elizabeth I in Kenilworth Castle with its rich & famous past. Hear tales of torture, treachery, passion & power in Warwick Castle. The multi-sensory new attraction, ‘Shakespeareance’ presents the life & legacy of William Shakespeare in such a brilliantly, exciting groundbreaking way. The Tudor world comes to life at Anne Hathaway’s famous thatched residence amidst beautiful cottage garden. Culture vultures take delight in experiencing a unique look of what goes on behind the scenes in the theatrical tour at the RSC. If art is your bag, then the Royal Pump Rooms will come up trumps everytime & whilst there, the educational Victorian Spa Town life exhibits will prove eyeopeners. Stratford’s Butterfly Farm with its exotic blooms, splashing waterfalls and fish-filled pools, not to mention Insect City is a colourful attraction. Small wonder so many tourists leave fair Warwickshire vowing to return. ‘Good night, good night! Parting is such sweet sorrow. That I shall say good night till it be morrow’.



what's on

may

- 9** **Nappuccino**
Free coffee morning.
Find out about using modern cotton nappies.
St Marks Church, Rugby Road, Leamington.
10:00 – 12noon

21 May - 19 June

'40 Years of Embroidery in the Leamington and District Guild: A Retrospective'.
Leamington & District Embroiderers Guild celebrate their anniversary. Market Hall Museum, Warwick.

21-27 Adult Learners Week

Activities all week at Bedworth Heath Leisure & Activity Centre. Call 024 7636 2512 for more info.

25-29 Stratford Cricket Festival

01926 418614 for more information.

31 May - 3 June

Celebration Week

Bedworth Heath Leisure and Activity Centre
Drop in to check out the activities on offer.

june

- 1-8** **Warwickshire Walking Festival**
Various locations in and around Stratford-upon-Avon. A host of themed and guided walks - places are limited so book early! Call 01926 413427 for a copy of festival guide or visit:
www.warwickshire.gov.uk/walkingfestival

10-12 Rally of the Midlands

Ultimate motorsport experience.
At various locations across Nuneaton, Bedworth and North Warwickshire.
Call 024 7637 6447 for more information.

13 **A Practical Introduction to the County Record Office**

County Record Office, Priory Park, Warwick.
2.30pm - 4pm. To book call 01926 738959.

20 **Nappuccino**

(Part of Real Nappy Week 20 – 24 June)
Camp Hill Early Years Centre, Camp Hill, Nuneaton, 10.30 – 12.30pm.

june contd.

- 22** **Nappy Information Day**
Royal Pump Rooms, Leamington Spa
10.30 – 2.30pm

- 25** **Bedworth street entertainment festival**
Bedworth Town Centre.
Call 024 7637 6447 for more information.

25 June - 17 July

Warwick Festival Exhibition

Paintings by local artist Anna Lorimer.
Market Hall Museum, Warwick.

july

- 3** **The Sheene Run**
Rugby Town Centre. Motorbike enthusiasts and families can join in the celebrations.

- 3-6** **Royal Show**
Stoneleigh Park, Stoneleigh.

- 5-7** **Warwickshire County Music Service Concert**
Bedworth Civic Hall, 19.30.
Call 024 7637 6707 for more information.

- 10** **Bramcote Barracks Open Day**
Bramcote Barracks, Nuneaton.
Call 024 7637 6447 for information.

- 11** **Nappuccino**
St Marks Church, Rugby Road, Leamington Spa.
10.00 – 12noon.

- 16** **Bedrock 2005**
Skater festival, Miners Welfare Park, Bedworth.
Call 024 7637 6447 for information.

23 July - 4 September

'Little and Large'

Examine the world through telescopes and microscopes, Market Hall Musuem, Warwick.

27 **Very Puzzling!**

St John's House Museum, Warwick.
10.30am - 12.30pm.
For more information call Heritage Education on 01926 412034.

august

- 3** **Real Romans**
Roman Alcester Heritage Centre, Alcester.
2pm – 4pm. Call 01926 412034.
- 8** **A Practical Introduction to the County Record Office**
County Record Office, Priory Park, Warwick.
10.30am - 12pm
To book call 01926 738959.
- 13 & 15**
Searching for Science with Warwickshire County Record Office
County Record Office, Priory Park, Warwick.
2.30pm – 5.00pm
Call 01926 738959.
- 17** **Teddy Bear's Picnic**
St John's House Museum, Warwick.
10.30am - 3.30pm
Call Heritage Education on 01926 412034.
- 23** **Spears, Stones and Bones**
Market Hall Museum, Warwick, 10am - 12pm
Call Heritage Education on 01926 412034.
- 24** **Upstairs, Downstairs**
St John's House Museum, Warwick.
2.00pm - 4.00pm
Call Heritage Education on 01926 412034.
- 27- 29** **Town & Country Festival**
Stoneleigh Park.
9.00am – 6.00pm.

farmers' markets

Warwickshire Farmers' Markets: 9am-2pm (unless stated)

Call 01608 664659 for more information.

7 & 21 May, 4 & 18 June, 2 & 16 July

Stratford upon Avon, Rother Street

14 May, 11 June, 9 July, 13 August

Southam, Market Hill

14 May, 11 June, 9 July, 13 August

Kenilworth, Abbey End (NOT Talisman Square)

20 May, 17 June, 15 July, 19 August

Warwick, Market Square

28 May, 25 June, 23 July, 27 August

Leamington Spa, Pump Rooms Gardens

27 May, 24 June, 22 July, 26 August • 10am – 2pm

Coleshill, Church Hill

26 May, 30 June, 28 July, 25 August Rugby, Clock Tower

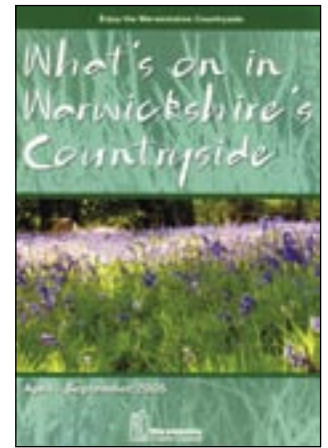
24 May, 22 June, 27 July, 24 August Shipston on Stour, Mill Street

Details of dates and times of Council meetings open to the public can be found at www.warwickshire.gov.uk/council or by calling 01926 410410.

Country Parks Guide

What's on in Warwickshire's Countryside

Your FREE 32 page guide to an exciting programme of summer fun around your country parks. For your copy call 01827 872660 or email: parks@warwickshire.gov.uk



Bedrock 2005 Skater Festival July 16



Information is correct at time of going to press. Before making your journey please check that the details have not changed. Some events require you to book in advance and may incur a small charge. For more information on these events please contact Warwickshire County Council 01926 410 410, Warwickshire County Record Office 01926 738959 (for any events where it states please book through Record Office) Heritage Education 01926 412034, Market Hall Museum 01926 412500. Ticket information on The Sheene Run www.thesheenerun.com. Bedworth Civic Hall Box Office 024 7637 6707. Town and Country Festival ticket hotline 024 7685 8237, Royal Show ticket hotline 0870 060 3782. For more information on both events www.rase.org.uk



what your COUNTY COUNCIL does for you

Adult Education & ICT Learning Centres
 Archaeology
 Archives & Records
 Arts
 Births, Marriages & Deaths Registration
 Business Support
 Childcare Information Services
 Community Safety
 Construction
 Consumer & Business Advice
 Country Parks & Recreation
 County Council Property Maintenance
 County Highways
 County Record Office
 Disability Services
 Early Years' Centres
 Ecology
 Economic Development
 Education
 Emergency Planning
 Employment
 Environmental Design
 Farms & Forestry

Fire & Rescue
 Foster Care
 Grants
 Heritage Education
 Homecare
 Libraries
 Museums
 Nature Conservation
 Parents' Centres
 Planning
 Quality & Environmental Support Systems
 Regeneration Projects
 Residential Homes
 Roads, Footpaths & Rights of Way
 Road Safety
 School Meals
 Social Care & Policy
 Trading Standards
 Transport & Local Bus Services
 Tree Work
 Warwickshire Calibration Services
 Waste Management
 Youth Services



contact us

call 01926 410410
 (minicom 01926 412277)

web www.warwickshire.gov.uk

email vieweditor@warwickshire.gov.uk

write View Editor
 Communications Division
 Chief Executive's Department
 Warwickshire County Council
 P.O. Box 9, Shire Hall
 Warwick CV34 4RR

Our normal office hours are **9 - 5.30pm Monday to Thursday & 9 - 5pm on Friday**. However by calling the number on the left you can obtain advice, help or signposting to any of our services from **8am - 8pm weekdays & 9am - 4pm on Saturdays**.

If this information is difficult to understand we can provide it in another format, for example; in Braille, in large print, on audiotape, in another language or by talking with you. Please contact us on 01926 412758.