



**Revised consultation phase maps**

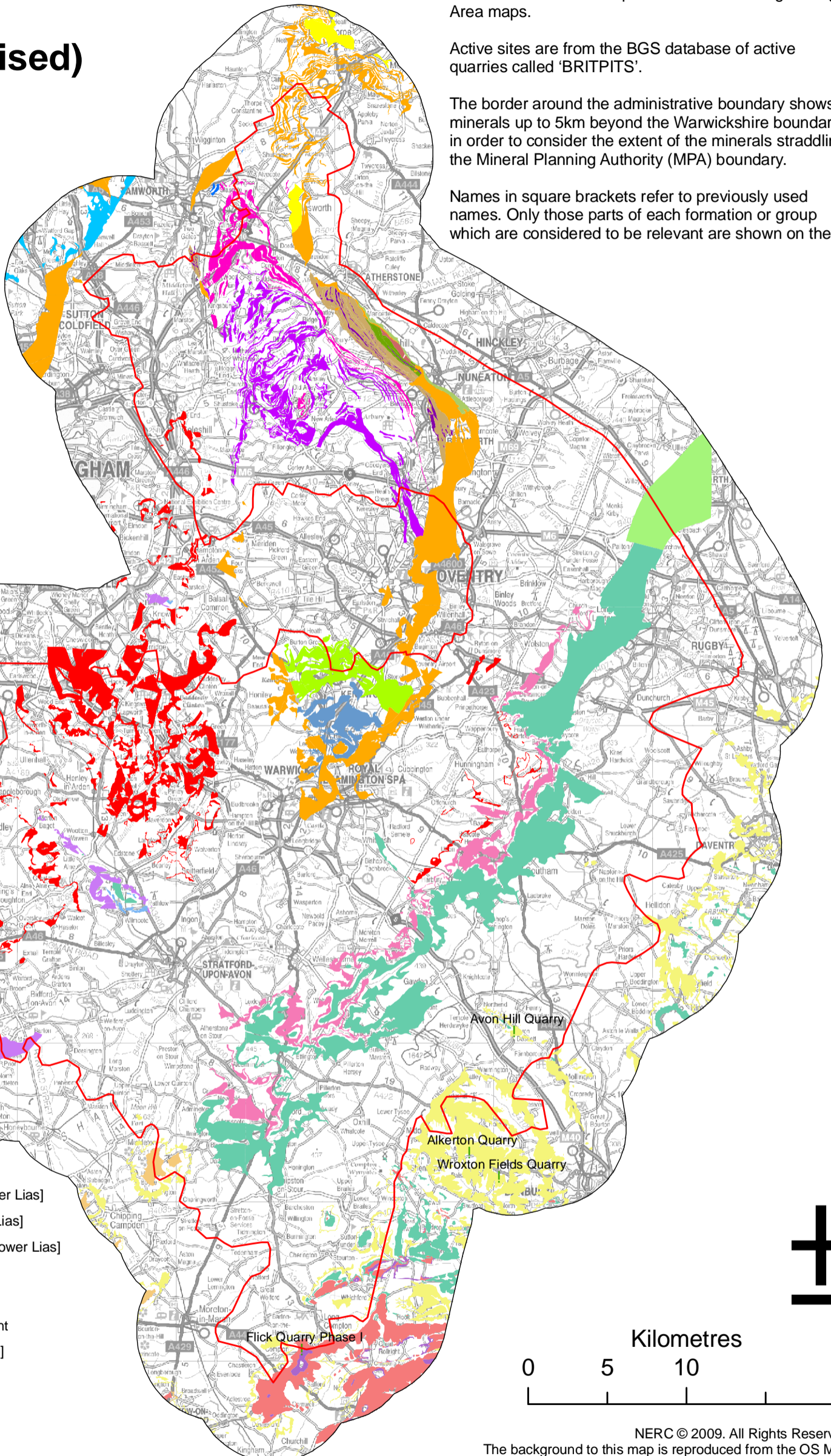
These maps are part of the consultation phase of the "Delineating Warwickshire Mineral Safeguarding Areas" project. They show geological units from the 'BGS DiGMapGB-50' geological linework and the 1999 published Warwickshire / West Midlands Mineral Resources map. This linework will be refined through consultation to incorporate knowledge from stakeholders in order to produce Mineral Safeguarding Area maps.

Active sites are from the BGS database of active quarries called 'BRITPITS'.

The border around the administrative boundary shows minerals up to 5km beyond the Warwickshire boundary in order to consider the extent of the minerals straddling the Mineral Planning Authority (MPA) boundary.

Names in square brackets refer to previously used names. Only those parts of each formation or group which are considered to be relevant are shown on the map.

# Warwickshire - Building stone (revised)

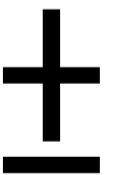


**BUILDING STONE**

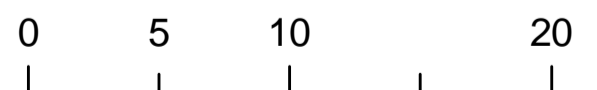
! Active site

**Bedrock**

- Sharp's Hill Formation
- Chipping Norton Limestone Formation
- Birdlip Limestone Formation
- Northampton Sand Formation
- Marlstone Rock Formation
- Blue Lias Formation [Lower Lias]
- Rugby Limestone Member (Blue Lias Formation) [Lower Lias]
- Salford Shale Member (Blue Lias Formation) [Lower Lias]
- Wilmcote Limestone Member (Blue Lias Formation) [Lower Lias]
- Langport Member (Lilstock Formation) [Lower Lias]
- Arden Sandstone Formation
- Tarporley Siltstone Formation - Warwickshire equivalent
- Bromsgrove Sandstone Formation [Keuper Sandstone]
- Polesworth Formation [Bunter Pebble Beds]
- Ashow Formation
- Kenilworth Sandstone Formation
- Enville Member [Enville Beds]
- Alveley Member (Salop Formation) [Keele Formation]
- Whitacre Member (Salop Formation) [Coventry Sandstone]
- Halesowen Formation
- Midlands Minor Intrusive Suite [Hosted by Stockingford Shale Group]
- Stockingford Shale Group [Hosting Midlands Minor Intrusive Suite]
- Hartshill Sandstone Formation [Hartshill Quartzite]
- Caldecote Volcanic Formation



Kilometres



NERC © 2009. All Rights Reserved  
The background to this map is reproduced from the OS Map with the permission of The Controller of Her Majesty's Stationery Office, Crown Copyright. All Rights Reserved  
Unauthorised reproduction infringes © Crown Copyright and may lead to prosecution or Civil proceedings.  
Licence Number 100037272/2009.

**Figure A9: Warwickshire - Building stone (revised)**