



# Warwickshire - Brick clay (revised)

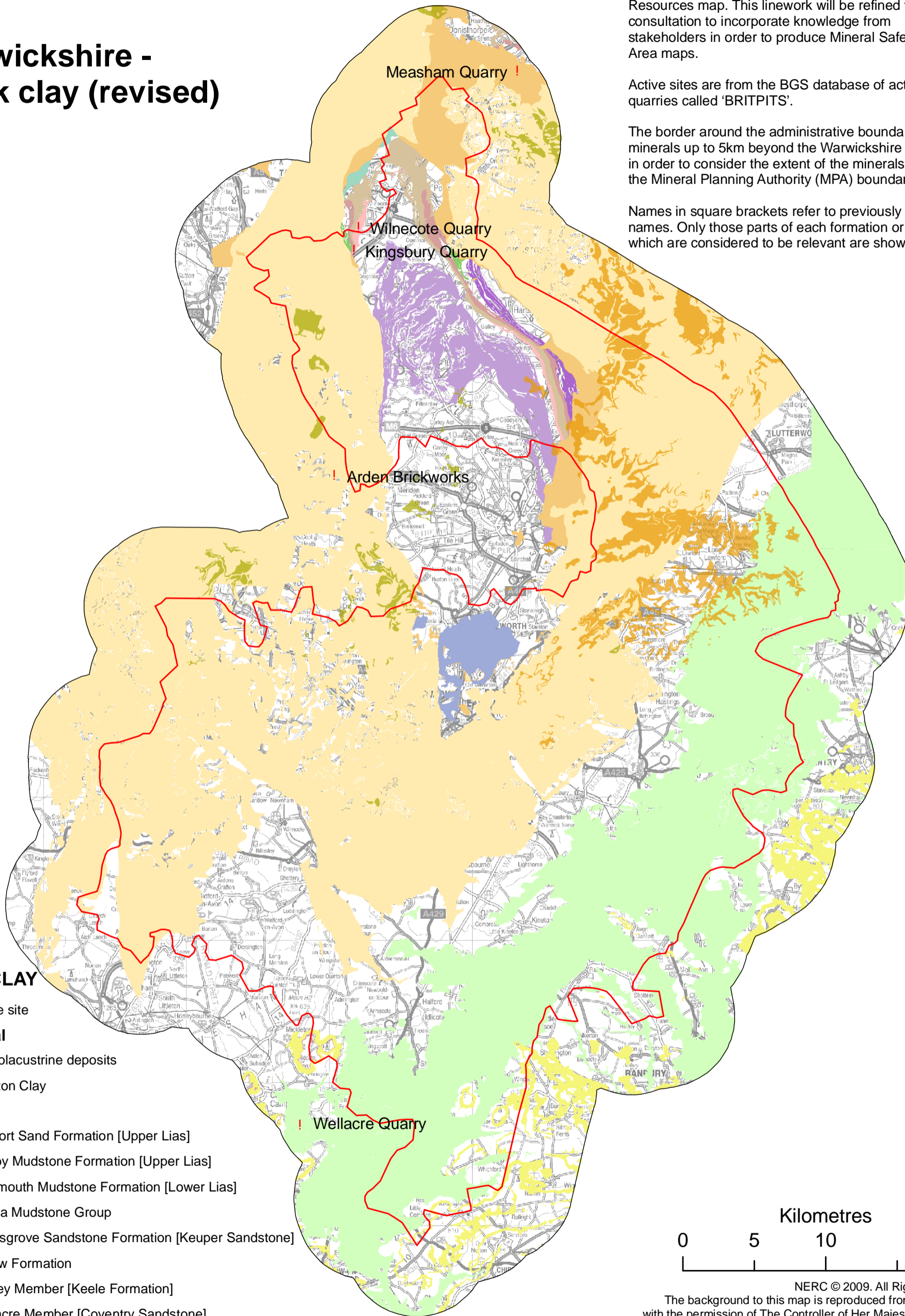
## Revised Consultation phase maps

These maps are part of the consultation phase of the "Delineating Warwickshire Mineral Safeguarding Areas" project. They show geological units from the 'BGS DiGMapGB-50' geological linework and the 1999 published Warwickshire / West Midlands Mineral Resources map. This linework will be refined through consultation to incorporate knowledge from stakeholders in order to produce Mineral Safeguarding Area maps.

Active sites are from the BGS database of active quarries called 'BRITPITS'.

The border around the administrative boundary shows minerals up to 5km beyond the Warwickshire boundary in order to consider the extent of the minerals straddling the Mineral Planning Authority (MPA) boundary.

Names in square brackets refer to previously used names. Only those parts of each formation or group which are considered to be relevant are shown on the map.



### BRICK CLAY

! Active site

### Superficial

Glaciolacustrine deposits

Wolston Clay

### Bedrock

Bridport Sand Formation [Upper Lias]

Whitby Mudstone Formation [Upper Lias]

Charmouth Mudstone Formation [Lower Lias]

Mercia Mudstone Group

Bromsgrove Sandstone Formation [Keuper Sandstone]

Ashow Formation

Alveley Member [Keele Formation]

Whitacre Member [Coventry Sandstone]

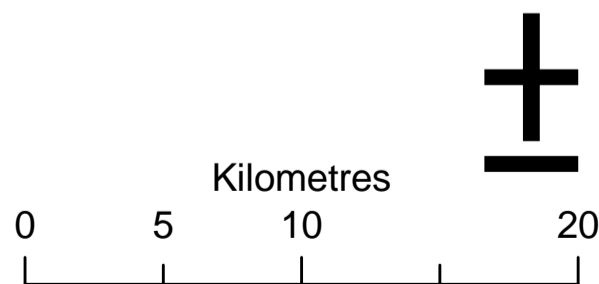
Etruria Formation [Etruria Marl]

Pennine Middle Coal Measures Formation

Pennine Lower Coal Measures Formation

Merevale Shale Formation

Outwoods Shale Formation



NERC © 2009. All Rights Reserved  
The background to this map is reproduced from the OS Map with the permission of The Controller of Her Majesty's Stationery Office, Crown Copyright. All Rights Reserved  
Unauthorised reproduction infringes © Crown Copyright and may lead to prosecution or Civil proceedings.  
Licence Number 100037272/2009.

**Figure A8: Warwickshire - Brick clay (revised)**