



Warwickshire - Cement raw materials

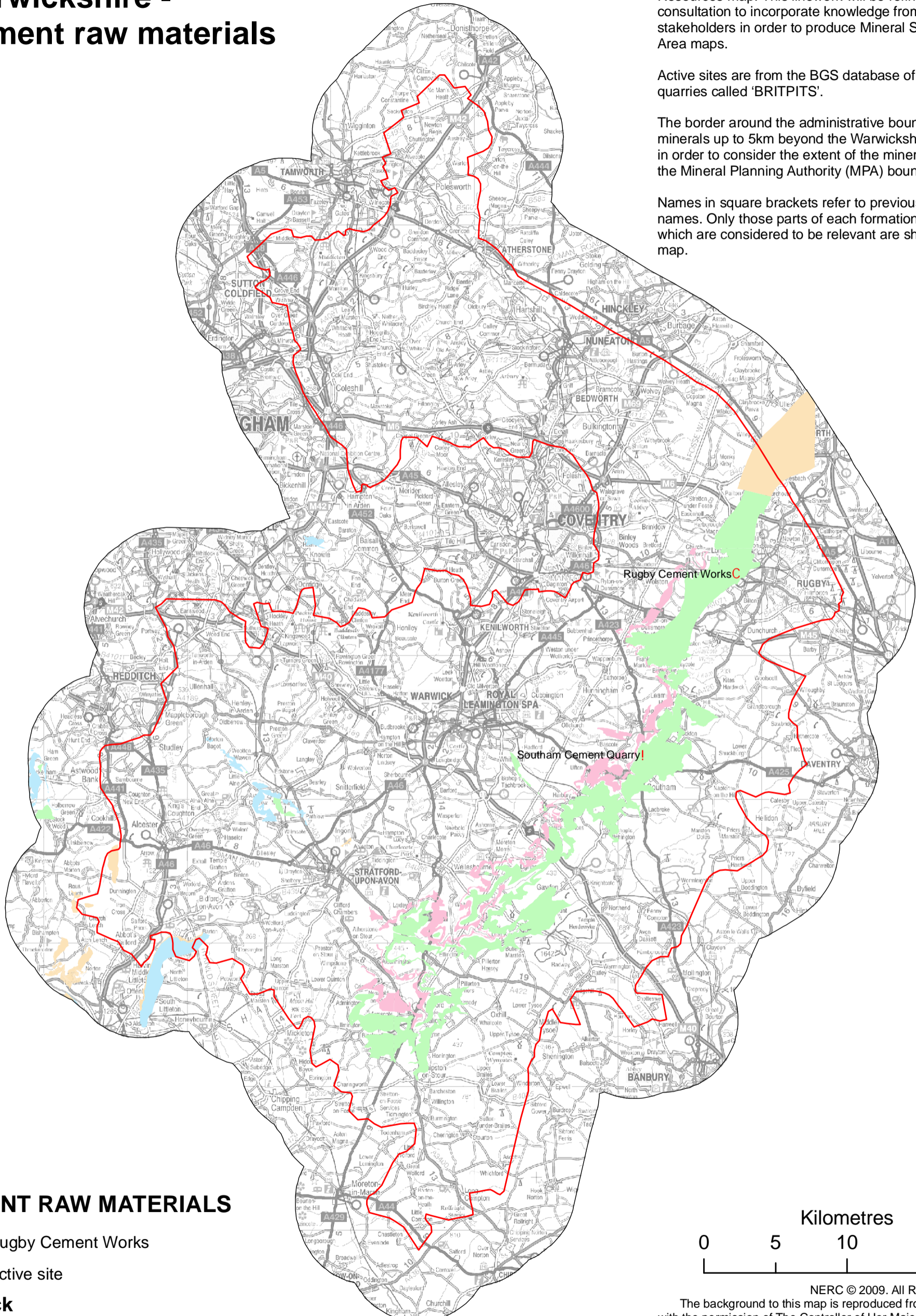
Consultation phase maps

These maps are part of the consultation phase of the "Delineating Warwickshire Mineral Safeguarding Areas" project. They show geological units from the 'BGS DiGMapGB-50' geological linework and the 1999 published Warwickshire / West Midlands Mineral Resources map. This linework will be refined through consultation to incorporate knowledge from stakeholders in order to produce Mineral Safeguarding Area maps.

Active sites are from the BGS database of active quarries called 'BRITPITS'.

The border around the administrative boundary shows minerals up to 5km beyond the Warwickshire boundary in order to consider the extent of the minerals straddling the Mineral Planning Authority (MPA) boundary.

Names in square brackets refer to previously used names. Only those parts of each formation or group which are considered to be relevant are shown on the map.

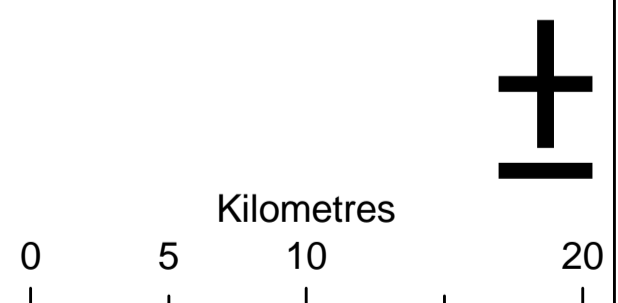


CEMENT RAW MATERIALS

- ! Rugby Cement Works
- ! Active site

Bedrock

- Blue Lias Formation (mudstone or mudstone/limestone interbedded) [Lower Lias]
- Rugby Limestone Member (mudstone/limestone interbedded) [Lower Lias]
- Wilmcote Limestone Member (mudstone/limestone interbedded) [Lower Lias]
- Langport Member (limestone) [White Lias]



NERC © 2009. All Rights Reserved
The background to this map is reproduced from the OS Map with the permission of The Controller of Her Majesty's Stationery Office, Crown Copyright. All Rights Reserved
Unauthorised reproduction infringes © Crown Copyright and may lead to prosecution or Civil proceedings.
Licence Number 100037272/2009.

Figure A6: Warwickshire - Cement raw materials