



British Geological Survey

NATURAL ENVIRONMENT RESEARCH COUNCIL

Warwickshire - Coal

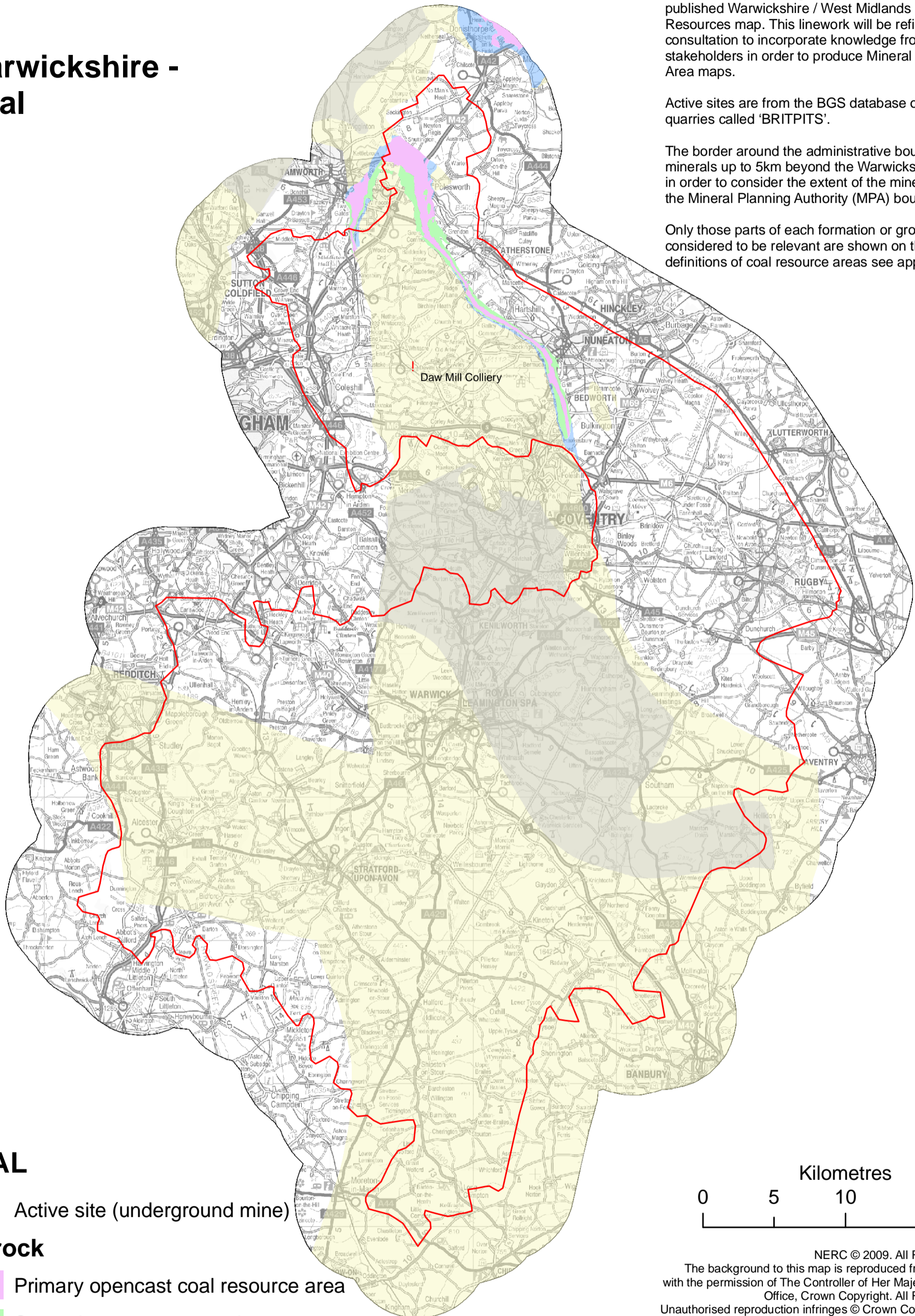
Consultation phase maps

These maps are part of the consultation phase of the "Delineating Warwickshire Mineral Safeguarding Areas" project. They show geological units from the 'BGS DiGMapGB-50' geological linework and the 1999 published Warwickshire / West Midlands Mineral Resources map. This linework will be refined through consultation to incorporate knowledge from stakeholders in order to produce Mineral Safeguarding Area maps.

Active sites are from the BGS database of active quarries called 'BRITPITS'.

The border around the administrative boundary shows minerals up to 5km beyond the Warwickshire boundary in order to consider the extent of the minerals straddling the Mineral Planning Authority (MPA) boundary.

Only those parts of each formation or group which are considered to be relevant are shown on the map. For definitions of coal resource areas see appendix 2.



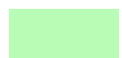
COAL

! Active site (underground mine)

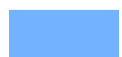
Bedrock



Primary opencast coal resource area



Secondary opencast coal resource area



Buried coal resource overlain by up to 50 m overburden



Underground coal resource area (seams at least 2 m thick, between 600 m and 1200 m depth)



Underground coal resource area (greater than 50 m of overburden)

NERC © 2009. All Rights Reserved
The background of this map is reproduced from the OS Map with the permission of The Controller of Her Majesty's Stationery Office, Crown Copyright. All Rights Reserved
Unauthorised reproduction infringes © Crown Copyright and may lead to prosecution or Civil proceedings.
Licence Number 100037272/2009.

Figure A4: Warwickshire - Coal