



British Geological Survey

NATURAL ENVIRONMENT RESEARCH COUNCIL

Warwickshire - Unconsolidated sand and gravel

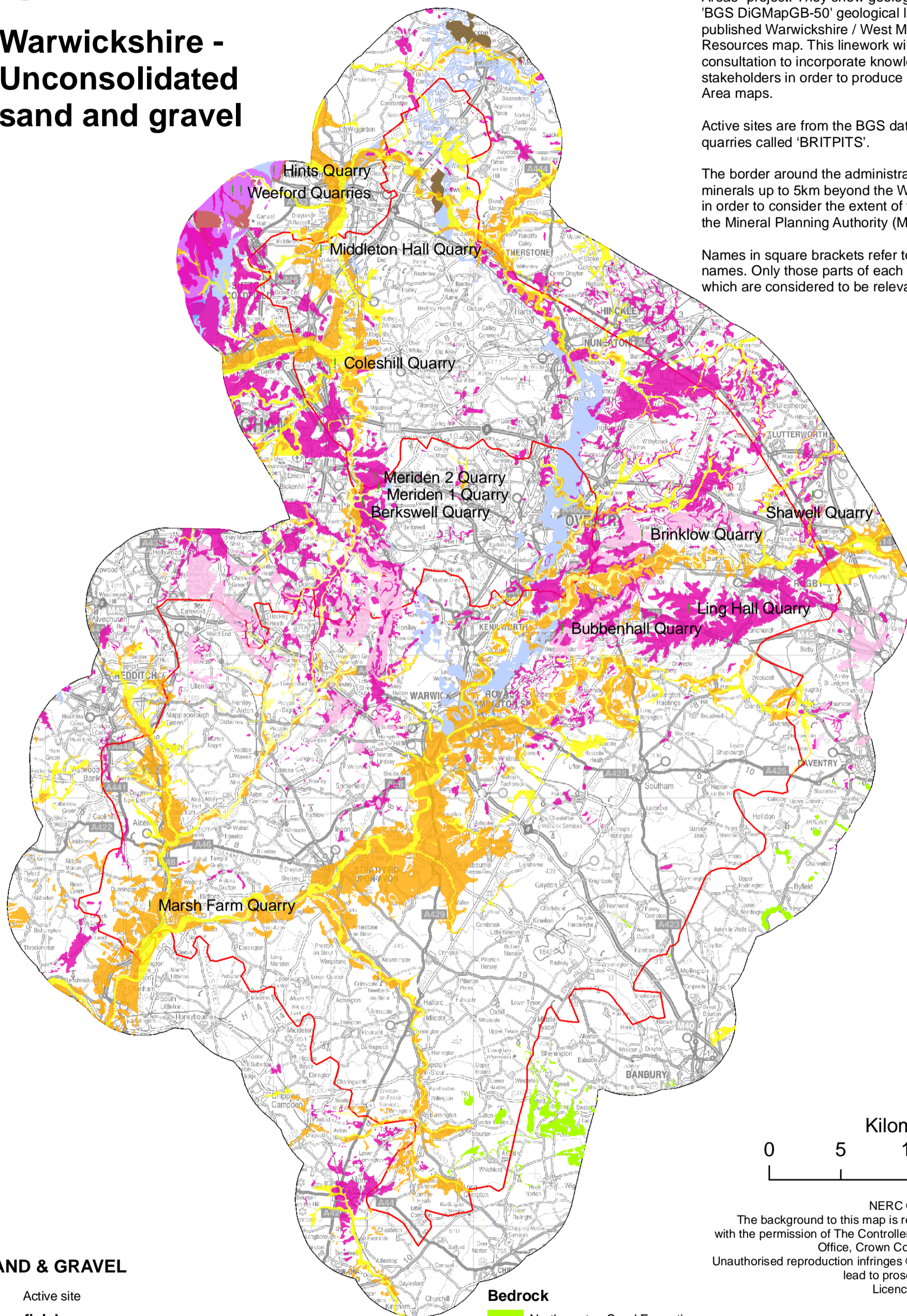
Consultation phase maps

These maps are part of the consultation phase of the "Delineating Warwickshire Mineral Safeguarding Areas" project. They show geological units from the 'BGS DiGMapGB-50' geological linework and the 1999 published Warwickshire / West Midlands Mineral Resources map. This linework will be refined through consultation to incorporate knowledge from stakeholders in order to produce Mineral Safeguarding Area maps.

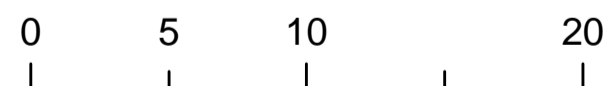
Active sites are from the BGS database of active quarries called 'BRITPITS'.

The border around the administrative boundary shows minerals up to 5km beyond the Warwickshire boundary in order to consider the extent of the minerals straddling the Mineral Planning Authority (MPA) boundary.

Names in square brackets refer to previously used names. Only those parts of each formation or group which are considered to be relevant are shown on the map.



Kilometres



SAND & GRAVEL

! Active site

Superficial

- Sub alluvial river terrace deposits - Inferred resources
- Sub alluvial river terrace deposits - Indicated resources in area assessed by BGS
- River terrace deposits - Inferred resources
- River terrace deposits - Indicated resources in area assessed by BGS
- Glaciofluvial deposits - Inferred resources
- Glaciofluvial deposits - Concealed resources in area assessed by BGS

Bedrock

- Northampton Sand Formation
- Bromsgrove Sandstone Formation [Keuper Sandstone]
- Wildmore Sandstone Formation
- Kidderminster Formation [Bunter Pebble Beds]
- Polesworth Formation [Bunter Pebble Beds]
- Hopwas Breccia Formation

NERC © 2009. All Rights Reserved
The background to this map is reproduced from the OS Map with the permission of The Controller of Her Majesty's Stationery Office, Crown Copyright. All Rights Reserved
Unauthorised reproduction infringes © Crown Copyright and may lead to prosecution or Civil proceedings.
Licence Number 100037272/2009.

Figure A2: Warwickshire - Unconsolidated sand and gravel