

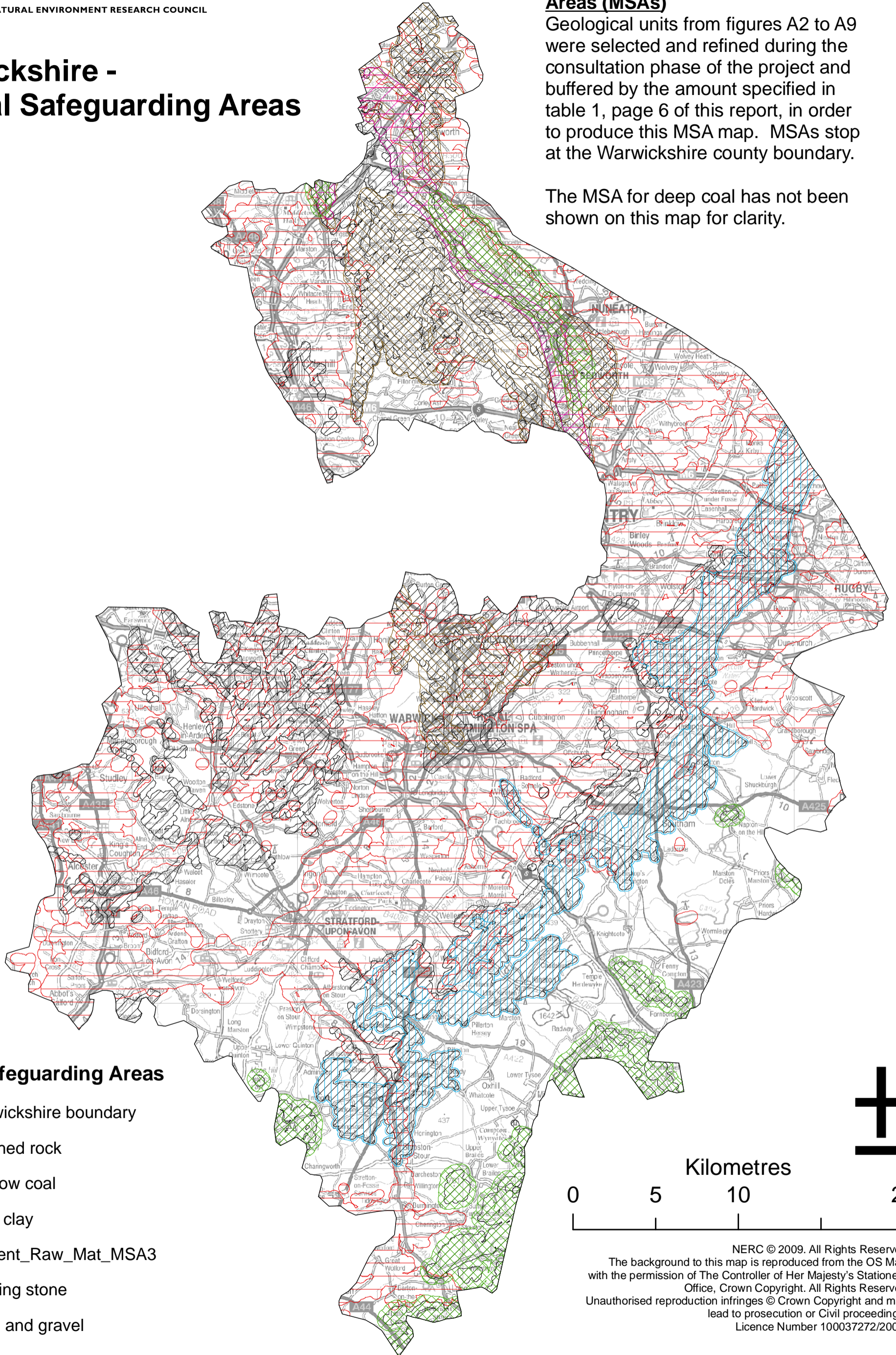


# Warwickshire - Mineral Safeguarding Areas

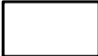






## Warwickshire Mineral Safeguarding Areas (MSAs)

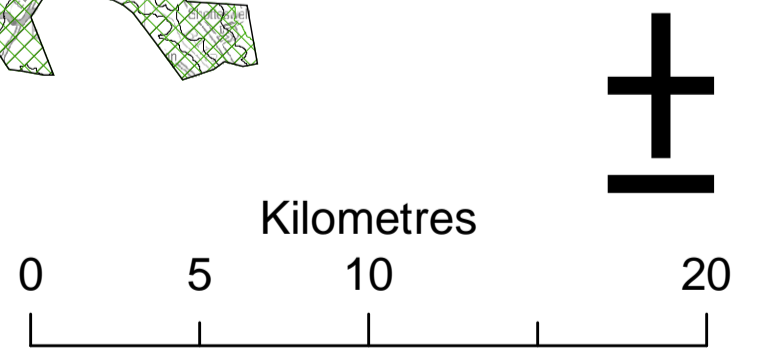
Geological units from figures A2 to A9 were selected and refined during the consultation phase of the project and buffered by the amount specified in table 1, page 6 of this report, in order to produce this MSA map. MSAs stop at the Warwickshire county boundary.

The MSA for deep coal has not been shown on this map for clarity.



### Mineral Safeguarding Areas

-  Warwickshire boundary
-  Crushed rock
-  Shallow coal
-  Brick clay
-  Cement\_Raw\_Mat\_MSA3
-  Building stone
-  Sand and gravel



NERC © 2009. All Rights Reserved  
The background to this map is reproduced from the OS Map with the permission of The Controller of Her Majesty's Stationery Office, Crown Copyright. All Rights Reserved  
Unauthorised reproduction infringes © Crown Copyright and may lead to prosecution or Civil proceedings.  
Licence Number 100037272/2009.

**Figure A16: Warwickshire MSAs**