

Appendix 3.b

Sub-regional Waste Framework

The following appendix provides the Sub-regional Waste Framework for Project Transform.

Project Transform
Sub-regional Waste Framework

2008-2020

SUB-REGIONAL FRAMEWORK FOR PROJECT TRANSFORM

1. Introduction / Background

Project Transform is a sub-regional partnership formed between Coventry City Council (CCC), Solihull Metropolitan Borough Council (SMBC) and Warwickshire County Council (WCC) to provide a joint approach to future sustainable management of waste within the three authorities.

The partnership was formalised in December 2007 when the individual authorities signed a Memorandum of Understanding (MoU). The first work stream for Project Transform is the provision of suitable residual waste treatment capacity for the sub-region.

Each authority has developed its own Municipal Waste Management Strategy¹ and this framework seeks draw these three documents together. This sub-regional framework also provides overarching strategic direction for the sub-regional partnership to maximise the efficiencies and benefits of joint working.

The three individual municipal waste management strategies have different durations. In order to maintain a common approach this sub-regional framework follows both Waste Strategy for England 2007 and Coventry's Draft Municipal Waste Management strategy by running until 2020. This will provide all partners with a suitable level of strategic direction for future waste management planning, whilst recognising the current uncertainty in the future delivery methods for sustainable waste management. This sub-regional framework will not, however, supersede the refreshing of all three strategies at the appropriate juncture.

Given the different levels of future recycling in each individual authority's waste strategy this sub-regional waste strategy commits the partners to achieving a minimum of 50% recycling by 2020. The framework seeks to do this by drawing on the common themes from all three waste strategies and projecting this work forward to 2020 in line with the targets set in Waste Strategy for England 2007.

The individual strategies on the partner authorities currently prescribe the following recycling / composting targets:

¹ Coventry's Draft Municipal Waste Management Strategy is currently being consulted upon (consultation ends 10th November 200).

Table 1 Recycling / composting targets

	2009/10	2014/15	2019/2020
Coventry City Council	32%	40%	50%
Solihull Metropolitan Borough Council	30% ²	33% ³	No Target Set
Warwickshire County Council	40-45%	No Target Set	No Target Set

2. Future review of the Sub-Regional framework

Both Solihull and Warwickshire's municipal waste management strategies were adopted before the publication of Waste Strategy for England 2007 and are due for review / refresh in 2009. In addition to updating both of these strategies to reflect the targets prescribed in Waste Strategy for England 2007, both authorities will include the shared aims and objectives of this sub-regional framework.

Coventry's Draft Municipal Waste Management Strategy has a review / refresh built in every five years and so far is the only strategy that reflects the targets prescribed in Waste Strategy for England 2007

It is therefore the partners intention that following the review of Solihull's and Warwickshire's individual strategies that this framework should also be subject to regular reviews as outlined below:

- 2009 (Re-view following the refresh of SMBC & WCC strategies)
- 2013 (all three partner authorities)
- 2018 (all three partner authorities)
- 2020 (all three partner authorities)

The 2009 review will also include the setting of sub-regional performance indicators for the future sustainable management of wastes, that reflect all three Municipal Waste Management Strategies. Key performance indicators for this framework will include:

² Target from Waste Strategy 2000 adopted by Solihull Metropolitan Borough Council

³ Target from Waste Strategy 2000 adopted by Solihull Metropolitan Borough Council

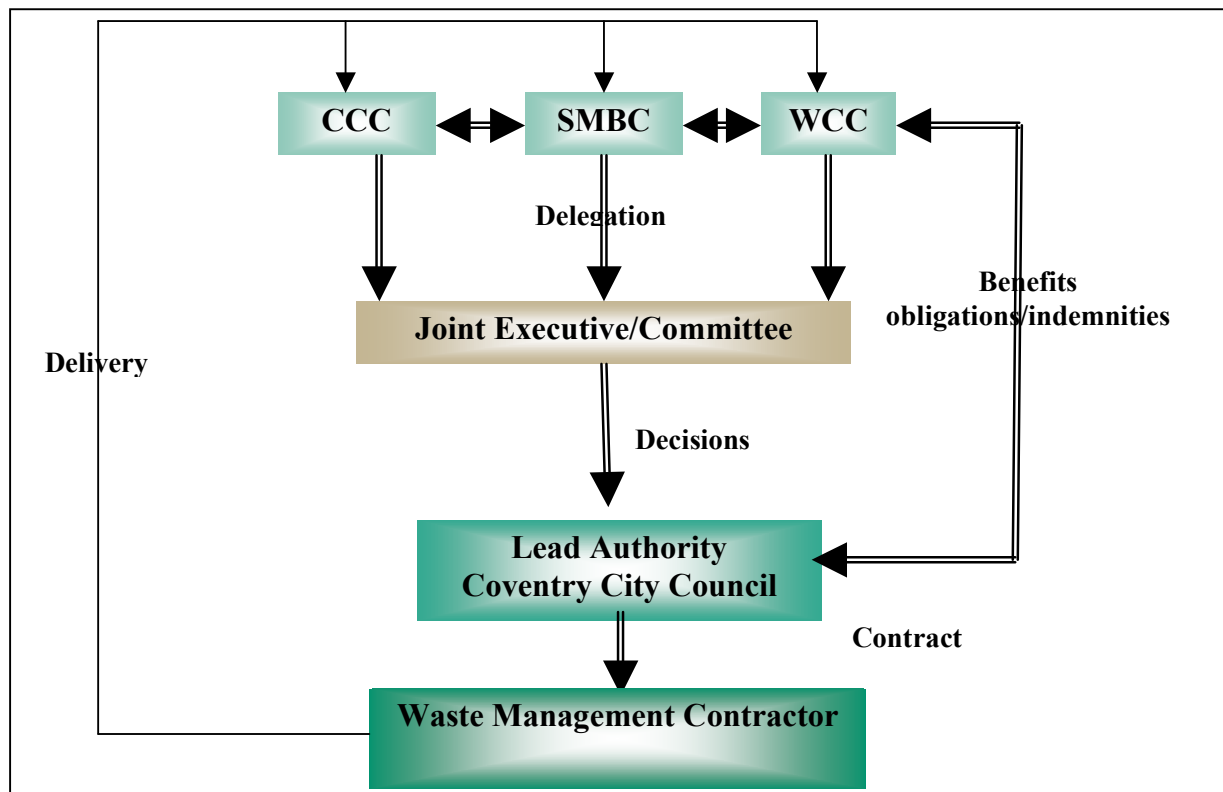
- percentage change in municipal waste arising
- (NI 191) – amount of residual waste per household
- (NI 192) – amount of household waste reused / recycled / composted
- (NI 193) – amount of municipal waste landfilled

It is likely that the 2013 review of all three strategies will consider the setting of binding sub-regional targets as well as authority specific targets as the authorities become increasingly strategically aligned.

3. Project Transform – Governance

As part of Project Transform's first work stream (future residual waste management capacity) a governance structure based upon a joint committee with a lead contracting authority has been agreed. This governance structure is shown in diagram 1 below.

Figure 1 Project Transform governance



4. Methodology used for producing a Sub-regional Waste Framework.

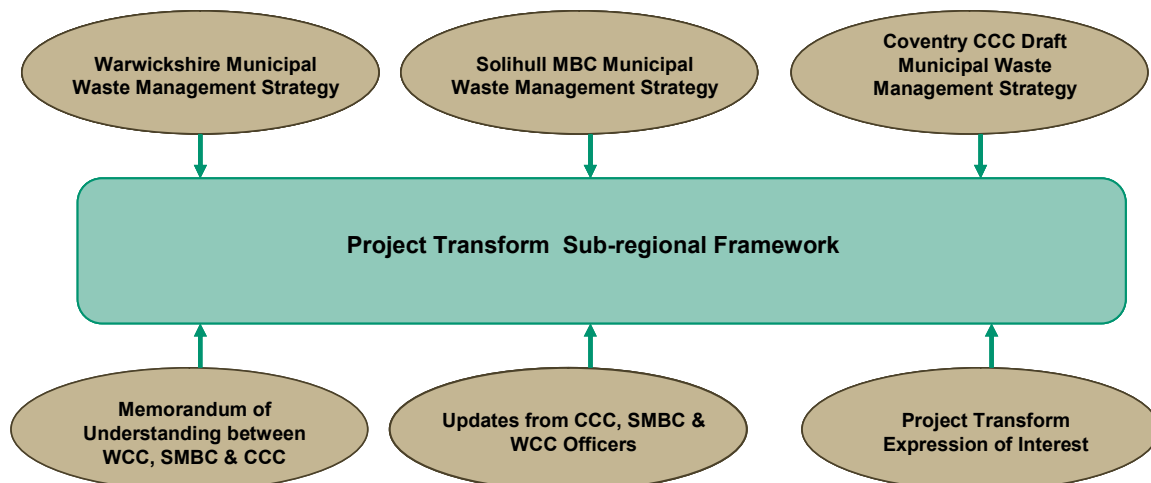
The aim of the framework is to define areas of common objectives, targets, policies and operational practice across the partner authorities. These areas of commonality have been derived from the Municipal Waste Management Strategies published by Coventry (draft), Solihull and, Warwickshire. Additional information has been obtained through interviews with the Waste Management Officers of each authority to inform this sub-regional framework.

Common guiding themes emerge from this study and this provides a framework to inform the direction that the sub-region is moving forward the management of its municipal waste.

Tables 1 – 5 (in Appendix 1) presents the key policy statements and operational decisions relating to municipal waste management for each of the authorities. Appendix 1 also sets these against the fundamental targets prescribed in Waste Strategy for England 2007.

Further analysis of Appendix 1 illustrates the commitment from all partners to deliver on the key priorities in Waste Strategy for England 2007 such as: improving performance in waste prevention, reuse, recycling and landfill diversion. Figure 1 below illustrates the sources of information used for the Framework.

Figure 2 Information used to establish common



Key common themes arising from the Project Transform partners are highlighted in section 5.

5. Common Themes & Direction of the Partners

There is a strong commitment from all partners to deliver the key requirements and ambitions of the Waste Strategy for England 2007 as identified in tables 1-5 in the appendix.

In terms of the fundamental and challenging deliverables of waste prevention & reuse, recycling, energy recovery and landfill diversion, each of the authorities has agreed targets⁴ and/ or actions to substantially improve performance.

The agreed common themes arising from this study of the project partners are as follows:-

- Raise awareness of waste and resource management issues through improved education and communications activities and initiatives.
- Act to tackle the amount of waste arising per head of population through a suite of operational measures and initiatives.
- Strengthen and further develop re-use activity through available outlets and by enabling and encouraging partnerships with the third sector.
- Support both prevention & reuse activities with promotional campaigns and seek funding where available to enhance the performance of services and initiatives.
- Develop and expand collection systems for the recycling of household waste, including a greater range of materials collected and higher tonnages to deliver improved recycling rates.
- Support recycling systems with campaigns to promote participation and reduce contamination (improve quality).
- Individually (and collectively) to deliver 50% household waste recycling rate by 2020. Progress toward the 50% will be regularly reviewed. The collective aim of the Partners is to exceed this target, while acknowledging the challenges that this may pose.
- Expand Biowaste collections in the form of green waste and/or food waste collections for biological treatment and to extract value from the resource.
- Seek to contribute to the recovery of energy from waste.

⁴ For Coventry City Council the targets and commitments from the MWMS are draft targets as the Strategy is currently out to public consultation (consultation ends on 10th November 2008).

- Reduce the occurrence of residual household waste through measures designed to prevent waste arising and where waste does arise to recycle or compost / digest the resource through dedicated collection and treatment systems, thereby substantially reducing the amount of residual waste arising per head.
- Reduce the amount of waste going to landfill through the provision and use of appropriate waste treatment systems for municipal waste.
- Deliver LATS obligations of all three authorities.

6. Conclusion

This framework along with the attached appendix, summarises the targets that have been set for the sub-region and how each partner authority will contribute towards these.

This framework will be a key guiding document for the sub-region and will be further developed as the three individual waste strategies are refreshed.

Appendix 1 Identification of Sub Regional policies, targets and activities related to key WS2007 themes

Table 1	Warwickshire County Council	Solihull Metropolitan Borough Council	Coventry City Council	National Drivers: Relevant WS 2007 targets / themes for municipal waste
Raising Awareness	<p><u>JMWMS M&E Strategic Objective:</u> Encourage public participation in the implementation and review of the Waste Strategy</p> <p><u>Actions to deliver waste awareness performance improvement:</u> Long running Recycle for Warwickshire campaign actively seeking funds and undertaking initiatives to promote waste prevention and participation and proper usage of recycling systems</p>	<p><u>MWMS Objective:</u> None relevant</p> <p><u>Actions to deliver waste awareness performance improvement:</u> Campaigns team to undertake at least 20 school visits / year to promote sustainable waste management practices Variety of schools initiatives including competitions and recycling schemes in place Roadshows to explain recycling change, encourage participation and promote waste prevention initiatives</p>	<p><u>Draft MWMS Objective:</u> Develop and support through proactive education, engagement and enforcement, higher levels of waste prevention, reuse, recycling and composting, which is consistent with national standards of good practice for an urban environment</p> <p><u>Actions to deliver waste awareness performance improvement:</u> extensive promotional and awareness raising activity, including commitment to support at least thirty events per year promoting sustainable waste management practices including prevention, reuse, recycling and composting</p>	<p><u>Policy:</u> Helping to change the behaviour of business and the public through information, advice and awareness raising, including extending the campaign for recycling to awareness and action on reducing waste and demonstrating the benefits of greater resource efficiency</p>

Table 2	Warwickshire County Council	Solihull Metropolitan Borough Council	Coventry City Council	National Drivers: Relevant WS 2007 targets / themes for municipal waste
Prevention & Reuse	<p><u>JMWMS Objective:</u> To minimise the amount of waste generated in Warwickshire</p> <p><u>JMWMS Target:</u> household waste arisings target of 544kg / person / year</p> <p><u>Actions to deliver waste prevention / reuse performance improvement:</u> numerous actions cited as part of the waste minimisation strategy (2007) including targets on junk mail, reusable nappies, home composting, community composting, smart shopping and work in schools. Reuse activity and third sector partnering, whilst already prominent to be strengthened.</p>	<p><u>MWMS Objective:</u> None relevant</p> <p><u>Actions to deliver waste prevention / reuse performance improvement:</u> numerous actions currently being delivered including campaign for reusable shopping bags, giving away ~10,000 bags in the borough by the end of 08/09, promotion of Real Nappies, plus starter packs, support of WRAP Home Composting scheme etc.</p> <p>In 2009 review of HWRC, it is intended to introduce a charity reuse scheme at the site</p>	<p><u>Draft MWMS Objective:</u> Develop and support through proactive education, engagement and enforcement, higher levels of waste prevention, reuse, recycling and composting, which is consistent with national standards of good practice for an urban environment</p> <p><u>Draft MWMS Objective:</u> Manage wastes arising in Coventry in a sustainable manner to reduce both its quantity and impact on climate change, and to maximise the benefits of saving energy and materials</p> <p><u>Draft MWMS Target:</u> Coventry City Council to seek to stabilise household waste arisings per head of population by 2010 and reduce household waste arisings per head to 2000 levels (454kg / person / year) by 2015</p>	<p><u>Government WS2007 Key objective:</u> decouple waste growth (in all sectors) from economic growth and put more emphasis on prevention and reuse</p> <p><u>Waste Prevention Target for residual h.h. waste:</u> 2010: 29% reduction from 2000 levels 2015: 35% reduction from 2000 levels 2020: 45% reduction from 2000 levels</p>

Table 2	Warwickshire County Council	Solihull Metropolitan Borough Council	Coventry City Council	National Drivers: Relevant WS 2007 targets / themes for municipal waste
			Actions to deliver waste prevention / reuse performance improvement: Wide range of actions involving third sector re-use initiatives, Junk mail initiatives, home composting promotion, freecycle promotion.	

Table 3	Warwickshire County Council	Solihull Metropolitan Borough Council	Coventry City Council	National Drivers: Relevant WS 2007 targets / themes for municipal waste
Recycling & Biowaste treatment	<p><u>JMWMS Objective:</u> To maximise the amount of material recycled and composted in Warwickshire</p> <p><u>JMWMS target:</u> 40-45% Recycling Target for Warwickshire by 2009/10. This is on course for delivery.</p> <p><u>JMWMS Target:</u> 60% recycling and composting target for HWRCs. This is on course for delivery.</p> <p><u>LAA Target:</u> Warwickshire to achieve 43.5% recycling by 2009/10, 46% by 2010/11.</p> <p><u>Project Transform:</u> 50% Recycling & Composting target by 2020</p> <p><u>Actions to deliver recycling performance improvement:</u> all Districts improving recycling collections. One District already collecting food waste from kerbside, with two to follow in Spring 2009. Currently one In-Vessel Composter has been awarded planning at Ufton site (Biffa) and a second biowaste treatment plant is in procurement.</p> <p>WCC has ~53% recycling rate for HWRCs and improving.</p>	<p><u>MWMS Objective:</u> None relevant</p> <p><u>MWMS Target:</u> superceded by events (see below)</p> <p><u>Changes since the MWMS, 2004:</u> Increasing emphasis on recycling. Elected members have agreed a series of service improvements in this area and enhanced recycling performance, leading to:-</p> <ul style="list-style-type: none"> • Whole borough on fortnightly green waste collection by Sept 08 • Addition of glass to kerbside collection Sept 08 • 140l wheeled bins for refuse and no side waste policy Sept 09 • Full kerbside sort dry recyclable policy introduced at Sept 09 • Investigation and trials of full recycling at multi-occupancy dwellings <p>Bickenhill Public Waste Disposal & Recycling site has a target of 50% recycling by 2008, rising over a four year period. Financial incentives for over-performance, penalties for under-performance</p> <p><u>LAA Targets:</u></p>	<p><u>Draft MWMS Objective:</u> Develop and support through proactive education, engagement and enforcement, higher levels of waste prevention, reuse, recycling and composting, which is consistent with national standards of good practice for an urban environment</p> <p><u>Draft MWMS Objective:</u> Manage wastes arising in Coventry in a sustainable manner to reduce both its quantity and impact on climate change, and to maximise the benefits of saving energy and materials</p> <p><u>Draft MWMS target:</u> 32% recycling rate by 2009/10, 40% by 2012/13 & 50% by 2019/20. This has been modelled as achievable (2008).</p> <p><u>Draft MWMS target:</u> 40% recycling & composting at HWRC by 2010, 60% by 2013, 70% by 2020.</p> <p><u>Draft MWMS target:</u> 40% recycling and composting of trade waste by 2015, 50% by 2020</p> <p><u>Draft MWMS commitment:</u> implement a full comingled dry recycling collection system across the City. A review to consider implementing a separate food waste collection system in 2013. Modelling shows 50% recycling would be met with food waste collection</p> <p><u>Project Transform:</u> 50% Recycling &</p>	<p><u>Government WS2007 Key objective:</u> get the most environmental benefit from [that] investment, through increased recycling of resources and recovery of energy from residual waste using a mix of technologies</p> <p><u>Recycling & Composting Target for h.h. waste:</u> 2010: 40% 2015: 45% 2020: 50%</p> <p><u>Waste Prevention Target for residual h.h. waste:</u> 2010: 29% reduction from 2000 levels 2015: 35% reduction from 2000 levels 2020: 45% reduction from 2000 levels</p> <p><u>Policy:</u> Increasing the (environmental and financial) value obtained from recycle material collected by local authorities (including a focus on food waste collection)</p>

Table 3	Warwickshire County Council	Solihull Metropolitan Borough Council	Coventry City Council	National Drivers: Relevant WS 2007 targets / themes for municipal waste
		<p>26.7% recycling rate 2009/10 6.7% recycling rate of non biodegradable municipal waste 2009/10</p> <p><u>Project Transform</u>: 50% Recycling & Composting target by 2020. Modelling shows currently committed systems should deliver ~45% by 2011.</p> <p><u>Waste Minimisation, Recycling & Recovery Plan (2003)</u>: modelled 50% recycling rate by 2013</p>	<p>Composting target by 2020</p> <p><u>Actions to deliver recycling performance improvement</u>: HWRC contractor provided with targets to deliver in improvement of the recycling performance, new kerbside recycling collection system due to be implemented and subsequently rolled out to Trade waste customers.</p>	

Table 4	Warwickshire County Council	Solihull Metropolitan Borough Council	Coventry City Council	National Drivers: Relevant WS 2007 targets / themes for municipal waste
Energy Recovery	<p><u>JMWMS Objective</u>: To contribute to the generation of energy from a non fossil source</p> <p><u>JMWMS Objective</u>: To make use of existing waste treatment infrastructure in Warwickshire</p> <p><u>Actions to deliver energy recovery performance</u>: Some residual waste currently goes to Coventry & Solihull EfW facility. Project Transform procurement, some residual waste from North Warwickshire will go to Staffordshire facility when operational</p>	<p><u>MWMS Objective</u>: None relevant</p> <p><u>Actions to deliver landfill diversion performance</u>: Continued use of the EfW facility. In 06/07 the recovery performance was 57%.</p> <p><u>Strategic Plan</u>: To continue Council commitment to Energy from Waste</p>	<p><u>Draft MWMS Objective</u>: To treat and recover optimum value from residual municipal waste</p> <p><u>Draft MWMS Objective</u>: Manage wastes arising in Coventry in a sustainable manner to reduce both its quantity and impact on climate change, and to maximise the benefits of saving energy and materials</p> <p><u>Actions to deliver energy recovery performance</u>: Continued use of the EfW plant. Preference for both materials and energy recovery from any replacement facility. Preference for CHP where practicable for any energy recovery from replacement for current waste recovery facility.</p>	<p>Government WS2007 Key objective: get the most environmental benefit from [that] investment, through increased recycling of resources and recovery of energy from residual waste using a mix of technologies</p> <p><u>Recovery Target for MSW</u>: 2010: 53%</p> <p>2015: 67%</p> <p>2020: 75%</p> <p><u>Policy</u>: Using PFI, Enhanced Capital Allowances and, where appropriate, the proposed banding system for Renewable Obligation Certificates to encourage a variety of technologies of energy recovery (including anaerobic digestion)</p>

Table 5	Warwickshire County Council	Solihull Metropolitan Borough Council	Coventry City Council	National Drivers: Relevant WS 2007 targets / themes for municipal waste
<p>Landfill Diversion</p>	<p><u>JMWMS Objective:</u> <i>To limit the amount of waste disposed of to landfill and to ensure that we meet our landfill diversion targets</i></p> <p><u>JMWMS Objective:</u> <i>To make use of existing waste treatment infrastructure in Warwickshire</i></p> <p><u>Actions to deliver landfill diversion performance:</u> <i>Improving recycling performance as noted previously & Project Transform procurement, some residual waste from North Warwickshire will go to Staffordshire facility when operational</i></p>	<p><u>MWMS Objective:</u> <i>None relevant</i></p> <p><u>LAA Target:</u> <i>reduce the amount of municipal waste to landfill from 19.9% to 17% by 2009/10</i></p> <p><u>Actions to deliver landfill diversion performance:</u> <i>Improving recycling performance as noted previously, combined with the EFW plant / replacement facility. In 06/07 the recovery performance was 57%.</i></p> <p><i>Less than 18% landfilled in 07/08. Long term aim to get below 10% of MSW to landfill by 2020</i></p>	<p><u>Draft MWMS Objective:</u> <i>Seek to consolidate and improve the high performance of landfill diversion, to ensure that the current status of Coventry as one of the leading authorities in the UK, for landfilling only a small proportion of our wastes, is maintained</i></p> <p><u>Draft MWMS Objective:</u> <i>To treat and recover optimum value from residual municipal waste</i></p> <p><u>LAA target:</u> <i>Reduction of residual household waste per household to 800 kg / year in 2008/9, 770 kg / year in 09/10 & 735 kg/ year in 10/11</i></p> <p><u>Actions to deliver landfill diversion performance:</u> <i>Improving recycling performance as noted previously, combined with the EFW plant / replacement facility. ~6% of household waste landfilled in 06/07</i></p>	<p><u>Government WS2007 Key objective:</u> <i>meet and exceed the Landfill Directive diversion targets for biodegradable municipal waste in 2010, 2013 & 2020</i></p> <p><u>Waste Prevention Target for residual hh. waste</u> 2010: 29% reduction from 2000 levels 2015: 35% reduction from 2000 levels 2020: 45% reduction from 2000 levels</p> <p><u>Recovery Target for MSW:</u> 2010: 53% 2015: 67% 2020: 75%</p> <p><u>Recycling & Composting Target for h.h. waste:</u> 2010: 40% 2015: 45% 2020: 50%</p> <p><u>Policy:</u> <i>Using PFI, Enhanced Capital Allowances and, where appropriate, the proposed banding system for Renewable Obligation Certificates to encourage a variety of technologies of energy recovery (including anaerobic digestion)</i></p>