

## Inside this issue

**Editor's Note** 2

**Warwickshire**

- Alcester Studio – Fame at last!
- University Graduation for Bright Kids
- 'Outstanding' achievement for St Peter's Tiddlers
- The Swans' Nest
- Nature Trails Day Nursery receive outstanding
- Footsteps Day Nursery Art Auction

**National** 5

- Toddle Waddle
- National Family Week
- Bring your bear day
- National Childcare Week

**Childminding** 7

- Childminding Conference
- Water Orton Childminders focus on Road Safety
- Marie & Paul Philips: Simply Outstanding
- Sam Sayer: Outstanding Again!

**Partnership** 8

- Congratulations on EYFS success

**Training & Recruitment** 9

- Warwickshire Recruitment Service
- Early Support Training Days
- Courses at Warwickshire College
- CWDC Early Years Workforce Qualifications Audit Tool

**Contacts** 11

# Alcester Nursery Studio at Ragley Estate

**Alcester Nursery Studio Ltd have been very privileged and lucky to have the use of a Forest School area on the Ragley Estate.**

They are fortunate to have Kelly Cusack, a forest school leader, assisted by Rick Barnes and a group of dedicated staff, to plan and run fun and exciting activities, including making fairy dens, instruments and obstacle courses using materials found naturally in the forest school.

They go off site every Friday for three hours and at the end of each term the parents are invited to join their children to take part in the fun activities. A real treat is the experience of having a camp fire where they cook marshmallows, crumpets and hot chocolate.

During the recent snow, they all dressed warmly and had the opportunity to see the forest area



in a different perspective with all the trees covered in snow. They hunted for foot prints, and the children were very proud to discover prints from deer, birds, foxes and a cat.

It is a fantastic way for the children to learn, play and explore in a natural environment, having the time and space to develop their skills.

**Carolyn Busk**  
Southern Area Childcare Support Officer

## Editor's Note

Happy New Year everyone and welcome to the new colour edition of Small Talk Issue 42. This first issue of the New Year is packed with interesting news and useful information and guidance from colleagues and services throughout the county. Happy reading!

Please be aware that Small Talk will now be produced four times a year instead of six. Don't forget to get in touch if you have some news to share or want to give feedback on anything you have read in this issue.

Best Wishes

Ruth

**Ruth**

Ruth Holwell  
Promotions Officer  
Phone: 01926 742 220  
Email:  
earlyyears@warwickshire.gov.uk

**Deadline for next issue:  
Electronic Format, 4pm 7th  
May 2010, hard copies must be  
received at least 3 days before  
this date to ensure inclusion in  
issue 43.**

General distribution of Issue 43  
by 14th July 2010.

## Fame at last!

Alcester Nursery Studio Ltd has always promoted healthy eating and physical exercise, and have been working with 'Leaps and Bounds' to help promote this ethos. At the end of last year we were delighted when Olympic Gold medallist, Sally Gunnell joined our session to help promote two years of classes run by Sam Yates with the nursery. Sally joined the activity leaders and helped deliver the session with children demonstrating balancing, hand eye co-ordination and some basic gymnastic skills, great fun was had by all. Parents and children were excited to see themselves on the telly when Midlands Today joined us to film and interview the children.



After this event the nursery had a follow up visit from Ofsted preceding their 'Outstanding' accreditation last year. The inspection report that followed quoted...

"You actively embrace new initiatives and provide extra activities, such as Forest School and Leaps and Bounds, to improve the outcomes for children. Your involvement in pilot schemes means you are always at the forefront of new ideas and you review how these can enhance your practice."

(Ann Burford Quality Assurance Manager - Jan 2010)

**Deborah French**  
Nursery Manager, Alcester Nursery Studio Ltd

# University Graduation for The Bright Kids

Children from Bright Kids at Studley Infants After School Club were recently invited to the University of Warwick for their very own 'Children's University' graduation ceremony, complete with caps and gowns.

Bright Kids have been a part of Warwickshire County Council's Children's University project for three years and this ceremony was the second attended by children from their Out of School Club.

Sally Grubb, Playworker, said "We are really proud to have had four of our children graduating with a Gold Award this year. Emily and Zoe also gained a High Achievement Award, which demonstrates their

# ‘Outstanding’ achievement for St Peter’s Tiddlers, Wellesbourne



Everyone at St. Peter’s Tiddlers in Wellesbourne are delighted at the Ofsted ‘Outstanding’ outcome they received in November. The group is run by a dedicated staff team and voluntary management committee and has been delivering quality outcomes for the local children as a pack away provision from the local church hall since 1993.

Manager Sally Clarke commented ‘The team and I are over the moon with this outcome as we have gone through many changes over the last 18 months, including the implementation of the EYFS. I am extremely lucky to work with such a committed and hard-working team who are passionate about their work. The inspector was particularly impressed with how well we work together as a team and the highly valued partnerships we have with parents. She also commented on how well our SEF was completed and the comprehensive documentation we have

in place to support the EYFS. The Inspector commented on how child focused we are and I feel that this really reflects what we continually aim to deliver and achieve.

Sally Clarke and team would also like to take this opportunity to thank the Childcare Support Team and the Advisory Teachers for their support over the last year.

### Ofsted reported that the:

- ◆ “pre-school makes excellent provision for the children in a successfully relaxed and homely environment”
- ◆ “staff have clear and considered knowledge of individual children which is informed by information from parents, valuable systematic and spontaneous observation and assessments are used to plan for their next steps for future learning”
- ◆ “all children thrive in this vibrant and child-centred atmosphere”

Congratulations to the committee and dedicated staff team on their outstanding achievement and their continued hard work in delivering high quality Early Years experiences for the children that attend the pre-school.

**Mandy Latham**

**Childcare Support Officer, Southern Area**

enthusiasm for the project”. The modules they have undertaken include such diverse things as gardening, cooking, road safety, Scrabble, maths, music and Tae Kwon Do.

Carolyn Lloyd, Study Support Officer - Children’s University Manager Extended Services, said “Congratulations to all the children and the school and partner organization staff who have helped make the Graduation ceremony such a success. Everyone enjoyed it, especially the children.”

**Tricia Wellings**

**Chief Executive of Bright Kids.**



Photograph shows the children celebrating their achievements. From left to right: Zoë Tolley, Natalie Allsop, Emily Gordon, Cloé James

## The Swans' Nest

Broad Street Cygnets are so proud of their new tree playhouse, bought with Capital grant funding, that they wanted to give it a name and in the process decided to raise money for Children in Need by asking for donations to name the house.

We had some very interesting and creative suggestions from the children but the choice that everyone most liked was 'The Swans' Nest'.

"A big thank you to Warwickshire County Council, especially Mandy and Carolyn, Childcare Support Officers, who have helped us through all the hiccups, as we gradually transformed the whole garden

area. The children have had to be so patient, often with noses pressed against the windows, and parents/carers endlessly regaled with stories of developments.

The house together with the safety surfacing, canopy, purpose built storage and linking gate have provided us with a wonderful outdoor classroom and opened up possibilities that we could only previously dream about."

**Linda Findon - Chair of Cygnets Trust**



Some Cygnets are pictured enjoying their new outdoor home with their Swan/EYP Miss Angie

## Nature Trails Day Nursery receive Outstanding

The staff and children at Nature Trails Day Nursery in Rugby are very pleased to announce our "Outstanding" Ofsted award, meeting the highest standard in all requirements. The staff have all worked really hard to ensure that our quality standards are maintained at all times and that the children in our care are happy and relaxed.



The inspector spent a day at the nursery talking to the staff, children and parents. She commented that the "children's personalities, likes and interests are extremely well known and this information is used effectively to ensure that they are happy, settled and enjoying their time at nursery."

The children are pictured here playing some of the outdoor musical instruments in our sensory garden which we purchased with some of the money received from the Capital Grant, we have also built a Garden Room which is to be used as a messy and creative room by all of the children.

**Vicky Stancer - Deputy Manager**

## Footsteps Day Nursery Art Auction

The children at Footsteps have been very creative this winter, painting canvases for our art auction to raise money for Acorns Children's Hospice. The auction was held at Shakespeare in Art Gallery in Stratford-upon-Avon for an evening of entertainment.



Grace Langridge - Sunflowers

The pictures were children's own representations of famous pieces of art ranging from da Vinci's Mona Lisa to Monet's Water Lilies. These budding artists' pieces of work were then auction off in a bidding war that achieved as high as £30 for a single piece of art. The art work was an exciting experience for all the children and they were extremely pleased to be helping the cause.

Sarah Reid, a parent of a child attending Footsteps said; "It was a really fun night we really appreciate all the hard work everyone put in!" The event was also a fun night for the children, who were entertained by a small group of fairies.

At Footsteps we would like to thank all the people at Shakespeare in Art Gallery, Marion English for all her help with this event and our sponsor English and Phillips Jewellers. Also, a big thank you to all the children for being extremely creative and to all who attended our event.

**Laura Wakeham - Deputy Manager**

# Toddle Waddle – April 2010

Small steps lead to big changes!

Toddle Waddle is a fun way for under 5s to do their bit to promote awareness of meningitis with their very own sponsored walk, or waddle!

In April 2010 it will be the 11th UK Toddle Waddle and, to date, nearly £2.5 million has been raised to help the Meningitis Trust continue its vital work.

## Taking Part is easy

Once signed up we will send you an organiser's pack full of information, goodies and all you need to organise your Toddle Waddle and have a great time!

For further enquiries you can call or email us:  
0845 120 4530, [toddlewaddle@meningitis-trust.org](mailto:toddlewaddle@meningitis-trust.org)

Or sign up on line at  
[www.meningitis-trust.org/toddlewaddle/Toddle-waddle-UK.html](http://www.meningitis-trust.org/toddlewaddle/Toddle-waddle-UK.html)  
If you would like to organise your own toddle



Bringing families together...

31st May - 6th June 2010



National Family Week is a national celebration of family and family life, encouraging families to play, learn, eat, read, be active and - most importantly - to spend quality time together.

There will be thousands of events for you to join in with, as well as giveaways, competitions and loads of special savings to help make spending family time that little bit easier.

For more information visit the National Family Week website at  
[www.nationalfamilyweek.co.uk/](http://www.nationalfamilyweek.co.uk/)

### Contact details:

Tel: 020 7871 0189

Email: [jnethersole@nationalfamilyweek.co.uk](mailto:jnethersole@nationalfamilyweek.co.uk)

National Family Week  
Trans-World House  
100 City Road  
London, EC1Y 2BP



# Bring Your Bear for schools and nurseries



**June 2010**

Paddington bear is the star of one of Action Medical Research's most successful fundraisers. The idea is simple: around 100,000 children each year bring their teddy bear to school or nursery for the day in exchange for £1 and help fundraise for the Touching Tiny Lives Appeal for sick and vulnerable babies. All donations go to research to find answers to help reduce premature birth and pregnancy complications.

The event takes place throughout June to celebrate Paddington's birthday on 25th June. If it suits you better, you can choose another month.

To help your setting fundraise as much as possible and for all the children to have lots of fun, we will send you your free fundraising kit packed with stickers, posters, worksheets for kids, educational resources and fundraising ideas. So why not register today?

**Website:** [www.action.org.uk/get\\_involved/bring\\_your\\_bear/register](http://www.action.org.uk/get_involved/bring_your_bear/register)

**Telephone:** 01403 210406

**Post:** Vincent House, North Parade, Horsham, West Sussex, RH12 2DP



## National Childcare Week

**12th – 19th July 2010**

Be part of National Childcare Week by joining Daycare Trust in celebrating childcare.

**To get further details on events and activities sign up now online at [www.daycaretrust.org.uk](http://www.daycaretrust.org.uk), email [nationalchildcareweek@daycaretrust.org.uk](mailto:nationalchildcareweek@daycaretrust.org.uk) or phone 0845 872 6260**



# Childminding Conference

**Saturday 20th March 2010  
9.30am to 3.30pm**

The Honiley Court Hotel  
Honiley, near Warwick, CV8 1NP  
Phone: 01926 484234

This is your opportunity to:

- ◆ Hear the inspirational speaker, Alison John, promoting inclusion with a presentation entitled 'Labels are for jars, not for children'.

the **network**  
for Childminders working  
in Warwickshire

- ◆ Have a choice of three workshops to support your Early Years Practice.
- ◆ Find out how "The Network" has developed since its launch 12 months ago.

The conference is free and includes a 3 course buffet lunch.

**Book Now as places are limited. Call the Early Years Training Team on 01926 742215**

## Water Orton Childminders focus on Road Safety

Childminders from Water Orton utilised the resources supplied by Warwickshire County Council's Little Green Bear Road Safety Club to give their children a fun roadshow about the importance of staying safe when out and about.

The Little Green Bear Roadshow is a perfect way of introducing children to road safety via songs, stories and puppets and focuses on the five main principles of the safety club:

- ◆ **STOP, LOOK and LISTEN**
- ◆ **Following the good examples of adults**
- ◆ **Car danger**
- ◆ **Be bright be seen**
- ◆ **Buying a first bike**

The childminders and children were entertained by Polly and Bobby, the little green bear and Caroline Blackburn from the Pre School Music group, Munchkin Melodies.

The children thoroughly enjoyed the show and there was plenty of singing and dancing. The children were also given a CD to take home so their parents can continue to talk to them about road safety.

For more information about the Little Green Bear Road Safety Club, contact Alison Williams on 01926 418 062.

**Emma Kerr - Childminder**



## They are simply outstanding!

Congratulations to Marie and Paul Phillips who received their Outstanding Ofsted outcome in October 2009. The whole of their home is used for childminding, and they provide exceptionally high quality care ensuring strong progress in the learning and development within an inclusive environment.

Ofsted stated that both Childminders have high aspirations for quality, which is evident through their

ongoing improvement and continuous development.

**Amanda Durno  
Northern Area  
Childcare  
Support Officer**



# Outstanding Again!!

**Sam Sayer has been childminding since 2001 and achieved her first outstanding outcome in 2006, she was delighted to receive another Outstanding outcome in 2009.**

Sam said it was hard work coming to terms with the introduction of the EYFS in September 2008 and also the completing of the SEF, which she found daunting at first. However, she now finds it is proving to be a

valuable monitoring and reflective tool helping her to review and develop her practice.

Quotes from Sam's recent inspection report endorse Sam's commitment to implementing the EYFS at the highest level:

- ◆ "The childminder has a very secure knowledge and understanding of the Early Years Foundation stage and very good use is made of observations and developmental records to inform planning."
- ◆ "The childminder has excellent understanding of how to meet the welfare and education requirements of the EYFS"

Sam provides the children with a happy and stimulating play environment giving them lots of opportunities and experiences to learn and achieve many skills. Sam greatly appreciates and values the support and partnership working with parents which is a key factor in supporting each child.

**Liza Stickley**  
**Southern Area Childcare Support Centre**



## Partnership News

# Congratulations

**Congratulations to Alison Winfield, Cathy Bignold and Vicki Watson on achieving Early Years Professional status.**

Alison, Cathy and Vicki are members of the Early Years Advisory team who support a number of Children's Centres across the county.

They received their awards on 26th November 2009 at a special celebration evening at University College, Birmingham.

**Judy Watkins**  
**Senior Early Years Advisory Teacher - Nuneaton & Bedworth**



# Warwickshire Recruitment Service

Need to fill a post in your setting ?

We offer a

**FREE SERVICE**

**to advertise all Childcare Job  
Vacancies**

Your post will appear on the Up2Date website  
[www.cwjobsinchildcare.co.uk](http://www.cwjobsinchildcare.co.uk), sent to Jobcentre Plus  
and emailed out to candidates on our database.

Call our Recruitment Team today  
on 01926 742212



## REMINDER: CWDC Early Years Workforce Qualifications Audit Tool

The CWDC audit tool was launched recently and should now be used by all registered settings in Warwickshire to record the qualifications that staff hold or are working towards and their additional training achievements.

With the online tool, you are able to:

- ◆ Check your setting meets minimum staff ratio requirements
- ◆ Monitor training needs and development to meet government targets

- ◆ Respond to information requests from local authorities
- ◆ Produce a report for Ofsted inspections

**Funding for training is still available to support those working in Early Years. Contact the training team on 01926 742215**

## Early Support Training Days



Early Support is a national programme designed to improve the way services for children under five with disabilities work together with families.

Early Support promotes partnership working with parents and carers so that families are at the heart of discussion and decision making about their children.

Early Support training is relevant to all agencies that provide services for families.

South Area Dates & Venue	East Area Dates & Venue	North Area Dates & Venue
23.03.10 - CPAS (Warwick)	15.04.10 - Wolston	20.04.10 - Bulkington
28.04.10 - CPAS (Warwick)	06.05.10 - Wolston	11.05.10 - Bulkington
20.05.10 - CPAS (Warwick)	24.05.10 - Wolston	09.06.10 - Bulkington
17.06.10 - CPAS (Warwick)	22.06.10 - Wolston	30.06.10 - Bulkington

All courses run 9.30 – 5.00, lunch is included.

**BOOKING IS ESSENTIAL** To check availability, the venue location and to book a place please contact **Karen Knowles – 01926 413737** or email [karenknowles@warwickshire.gov.uk](mailto:karenknowles@warwickshire.gov.uk)

## Courses at Warwickshire College

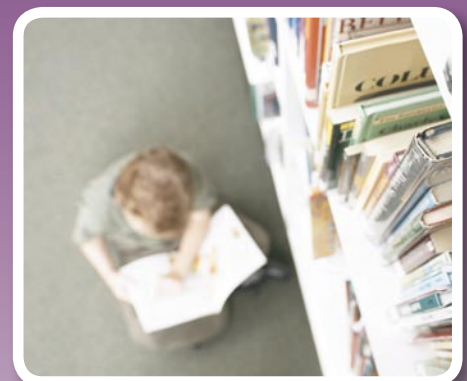
### CACHE Courses

#### CACHE NVQs in CCLD and Supporting Teaching and Learning in Schools at levels 2 and 3

**CACHE Certificate in Playwork** - To do this level 2 qualification you need to be employed or working as a volunteer in a play setting.

**CACHE Diploma in Playwork** - This qualification is for you if you have considerable experience and are working in Out of School Provision, or in a setting where play or sports activities are provided for children. For more information please contact Julie Dent, telephone 01926 319096 or email [jdent@warkscol.ac.uk](mailto:jdent@warkscol.ac.uk)

**CACHE Level 3 Certificate in Early Years Foundation Stage Practice.** The qualification is aimed at practitioners who already hold a Level 3 qualification and wish to update their skills to deliver the EYFS. Further details are available from Zoe Telford on 01926 318110 or email: [ztelford@warkscol.ac.uk](mailto:ztelford@warkscol.ac.uk) Funding may be available for these courses, contact Jess Fitzgerald 01926 742213



### Foundation Degree

#### Foundation Degree in Early Years at Warwickshire College, Leamington

Students will need to be working in an appropriate setting with children 0-5 or have access to this age range and will also need to have a Level 3 qualification in Early Years or Children's Care, Learning and Development (NVQ 3, NNEB, DCE, BTEC Nat Dip) and post qualifying work experience.

Funding is available through Warwickshire Local Authority and students will be eligible to apply for Local Authority grants, college bursaries and student loans. Further details are available from Zoe Telford on 01926 318110 or email: [ztelford@warkscol.ac.uk](mailto:ztelford@warkscol.ac.uk)

## Early Years Advisory Team

Contact any member of the Advisory Team via Camp Hill Early Years Centre.

Warwickshire Early Years Advisory Team  
Schools Performance Team  
Camp Hill Early Years Centre  
Hollystitches Road  
Nuneaton  
CV10 9QA

Tel: 024 7634 9694 Fax: 024 7634 9671

Early Years Advisory Team Manager: Joanne Vallis

### NORTHERN AREA

Senior Advisory Teacher - Joanne Vallis

Senior Advisory Teacher - Judy Watkins

Advisory Teacher - Solveig Smith

Children's Centre Teachers - Vicki Watson  
- Alison Winfield  
- Abi Dean

### SOUTHERN AREA

Senior Advisory Teacher - Sandie Sheppard

Senior Advisory Teacher - Carol Massey

Advisory Teachers - Sam Garrett  
- Cathy Bignold  
- Sharon Kindred  
- Solveig Smith

Children's Centre Teachers - Anne Smith

### EASTERN AREA

Senior Advisory Teacher - Shona Lewis

Advisory Teacher - Sorrel Foster

### ADVISORY SUPPORT

#### Early Years Advisory Workers

Rachel Pooler - North & Nun/Bed

Clare Smallwood - Warwick

Carole Ealing - Rugby

Linzi Sanders - Stratford

#### Administrative Support

Office Manager - Anne Woodley

Administrative Assistants - Rachel Matthews  
- Jeffrey Bowes

## Integrated Disability Service - Teaching and Learning

### Warwick and Stratford Providers

Orion House, Athena Drive, Tachbrook Park, Warwick  
CV34 6RQ Tel: 01926 413737

Zoe Harwood – Strategic Manager (0-5)

Keeva Austin – Teacher

Sandra Bowering – Lead Consultant Teacher,  
Warwick & Stratford

Collette Morris – Teacher

Anne Marie Jones – Teacher

Rachel Schofield-Newton – Teacher

Julia Stoneley – Teacher

Julie Morris – Teacher

Jeanette Smith – Co-ordinating Manager Birth -  
3 Portage Service

Gillian Henderson – Child Development Adviser

Harjinder Bahra – SEN Childcare Co-ordinator

Babs Stuart - Teacher

### Rugby Providers

Faraday Hall, Lower Hillmorton Road,  
Rugby, CV21 4AE Tel: 01926 476928

Santina Baddeley – Lead Consultant Teacher, Rugby

Donna Duffey – Child Development Adviser

Vicky Furminger – Teacher

Suzanne Hack – Teacher

Val Redhead – Child Development Adviser

North Warwickshire, Nuneaton & Bedworth Providers  
Easter Way, Ash Green, Coventry CV7 9HP  
Tel: 02476 368800

Collette Morris – Teacher

Clare Woodman – Lead Consultant Teacher

Anne Hallissey – Teacher

Gill Truman - Teacher

Linda Jones - Teacher

Sue Lowe – Lead Consultant Teacher, North/Nun & Bed

Anne Avery – Child Development Adviser

Gill Marshall – Child Development Adviser

Suzanne Everitt – SEN Childcare Co-ordinator

## Early Years & Childcare

### Head of Early Years and Childcare:

Norma Smeaton

### PA

Krishna Shindroja

☎ 01926 742232

## Family Information Service

**Helpline for all childcare related enquiries:**

**Monday to Thursday 9.00am to 5.30pm,**

**Fridays 9.00am to 5.00pm**

☎ 0845 090 8044

(local rate number with voicemail out of hours)

**Textphone: 01926 736327**

**Email: fis@warwickshire.gov.uk**

### F.I.S. Audit Manager:

Elaine Coates ☎ 01926 742208

### Information Analyst:

Elaine Coates ☎ 01926 742209

### Promotions Officer

Gavin Tristram ☎ 01926 742207

### Information Officer:

Holly McBride ☎ 01926 743250

### Senior Development Worker:

Jan Lacey ☎ 01926 743066

### Development Workers:

John Clarke ☎ 01926 742261

Sarah Powell ☎ 01926 742205

Steff Palmer ☎ 01926 742204

Carrie Pailthorpe ☎ 01926 742200

Sally Davies ☎ 01926 743065

### Database Administrators:

Nav Rai ☎ 01926 742202

Michelle Yates ☎ 01926 742200

Mark Chirnside ☎ 01926 742261

## Workforce Development

### Training and Recruitment Officer:

Alison Brolly ☎ 01926 742215

### Recruitment & Training Promotions Officer:

Ruth Holwell ☎ 01926 742220

### Training & Recruitment Clerical Officer:

Jessica Fitzgerald ☎ 01926 742213

### Recruitment & Training Administrative Officer:

Kerry Darlow ☎ 01926 742212

## Educational Psychology Service (EPS) Early Years and Parenting Team

**For advice on individual children, settings can contact EPS through their IDS teachers. The following members of EPS take an overview of Early Years work across the country:**

County wide/Leamington & Stratford

Dr Helen Kendall ☎ 01926 461900

### Rugby/ East

Kerry Stace ☎ 01788 338130

### N&B/ North

Sarah Bowe ☎ 02476 754226

## Warwickshire, Childminding Network Co-ordinators

Marion Childs ☎ 01926 810320

Louise Hardwick ☎ 01926 743057

## Childcare Support Centres/ Early Years Education & Childcare Centres, Incorporating Early Years Resource Library

### Southern Area

☎ 01926 410410

### Childcare Support Officers:

Carolyn Busk

Mandy Latham

Tony Ibbitson

### Administrators:

Lucy Crossley

Liza Stickley

### Northern Area

☎ 024 7635 0222

### Childcare Support Officers:

Amanda Durno

Carol Bedingham

Rachel Booth

### Administrators:

Kathy Hall

Mandy Kane

### Eastern District

☎ 01788 547400

### Childcare Support Officers:

Angela Moore

Gill Chilton

### Administrators:

Lorraine Ludlow

Elaine Whiteley

## Nursery Funding Provider Enquiries

Bahram Hashemi ☎ 01926 742235

## Other Support

### Senior Parenting Practitioner

Caroline Thompson ☎ 01926 742197

### Forest School Coordinator

Dawn Bagley ☎ 01926 742231

### School Transfer Coordinator

Jess Waterhouse ☎ 01926 742211

### Children's University Coordinator

Carolyn Lloyd ☎ 01926 742252

### 2 Year Old Funding Project Officer

Tracey Garratt ☎ 07500 606670

## Extended Services

### Extended Services

☎ 01926 742244

E: extendedservices@warwickshire.gov.uk

### Development Officers

Ally Lynch - Southern Area Stratford District

Karen Sheerin - Nuneaton & Bedworth, North Warwickshire

Phyllis Collins - Rugby, Central & Eastern Area & Warwick District

Linda Aston - Kenilworth Area

## Area Managers Early Years & Childcare

### Eastern Area

Julie Toal ☎ 01788 576097

### Northern Area

Barbara Wallace ☎ 02476 350222

### Southern Area

Vicky Kersey ☎ 01926 742221

### Central Area

Diana Spragg ☎ 01926 742216

## Business Support and Funding

### Business Support Officer

Andrea Clark ☎ 01926 742224

### Funding Administrator

Simon Dance ☎ 01926 742226

### Funding & Monitoring Officer

Mary Petitt ☎ 01926 742225

## Children's Assessment Teams

**In case of concern about child welfare/safety or suspected abuse, contact the relevant area office and ask for the Children's Duty Team.**

### North Warwickshire District

☎ 01827 711101

**Nuneaton District** ☎ 024 7635 1234

**Bedworth District** ☎ 024 7664 3838

**Rugby District** ☎ 01788 570011

**Warwick District** ☎ 01926 334111

### Stratford & Alcester District

☎ 01789 269391

### Southam & Shipston District

☎ 01926 813110

**In case of difficulty in reporting a concern, contact Family Information Service:**

☎ 0845 090 8044 (local rate)

## Ofsted (Office for Standards in Education)

**General helpline:** ☎ 0845 640 4040