

WARWICKSHIRE WASTE CORE STRATEGY: EMERGING SPATIAL OPTIONS

CONSULTATION – March 21st –
May 20th 2011

BACKGROUND

- Previous Consultations in 2006 and 2007
- Comments considered and guided the development of a 2008 'Revised Spatial Options' consultation document
- 2008 consultation delayed due to spatial implications of Project Transform
- Taken the 2008 Document and refined and re-assessed options
- Regional Spatial Strategy – provides the most up to date evidence base
- EU Waste Framework Directive

Waste Core Strategy –Emerging Spatial Options Document structure

- Background
- Issues / Policy Principles
- Spatial Options (5)

Background

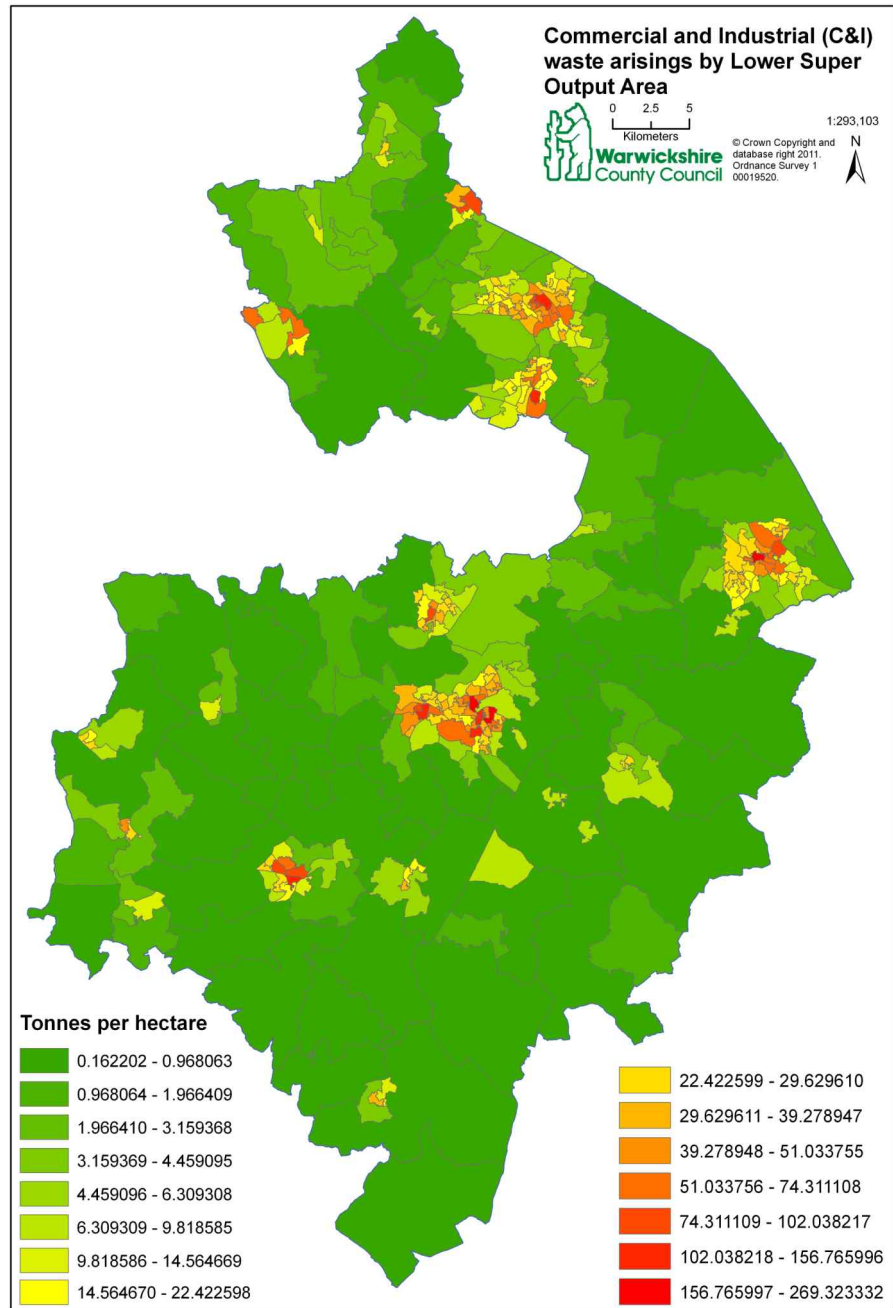
- Spatial Portrait
- Vision
- Policy Context
- Objectives

Key Issues → Policy Principles

- Principles of waste management
- Locational Strategy
- Strategic sites
- Treatment Gap
- Municipal Waste
- Commercial and Industrial Waste
- Construction and Demolition Waste
- Hazardous Waste
- Other Wastes
- Safeguarding
- Landfilling
- Impact on the Environment
- Implementation and Monitoring

Waste Management Principles

- Waste Hierarchy
 - Principle of Proximity
 - Self Sufficiency
 - Treat waste as a resource
-
- Waste should be treated as close as possible to where it is produced.
 - Most waste is produced in urban areas.
 - Reduce waste to landfill
 - Encourage Reduction, Re-use and Recycling

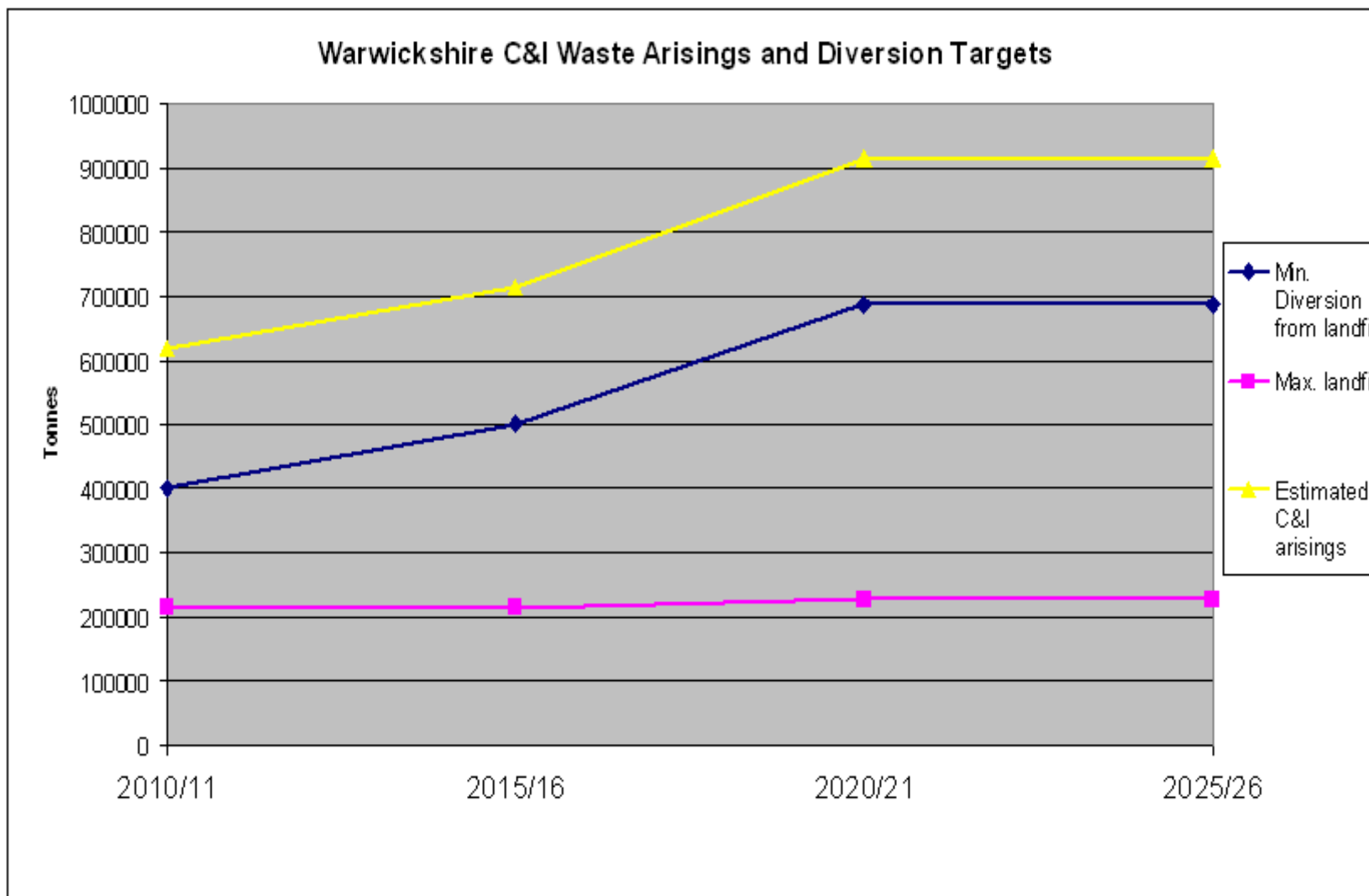


Treatment Gap

- Treatment Gap – Warwickshire = 0.6 mt (defined in the RSS) in 2008.
(Only for Municipal and Commercial and Industrial Waste streams)
- Permissions granted in the last 3 years cover the Gap.



Source: derived from West Midlands Regional Spatial Strategy – Phase 2 Revision Preferred Option



Source: derived from West Midlands Regional Spatial Strategy – Phase 2 Revision Preferred Option

5 Spatial Options

Now only 5 options – refined from the previous 7 (discussed at the last Waste Forum)

The Locational Strategy will be developed through consultation responses on the 5 Spatial Options

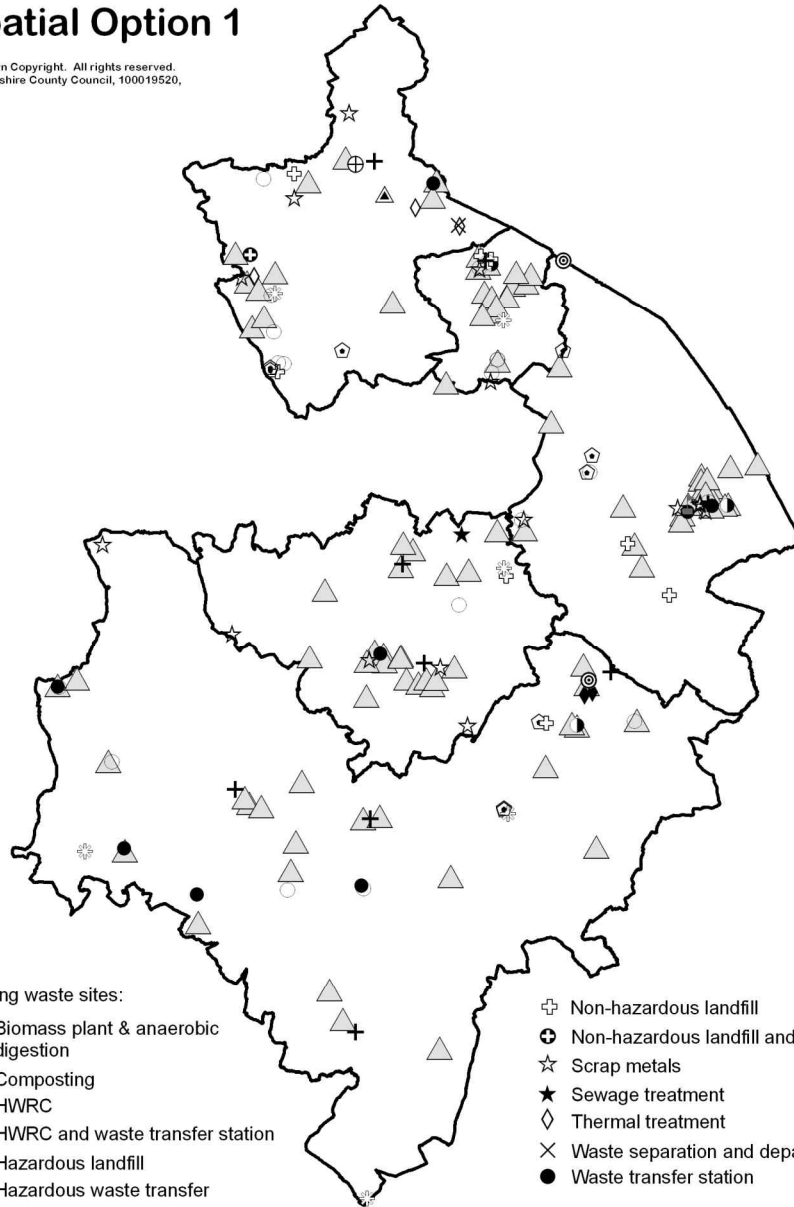
- 1. Development on industrial estates/ Brownfield land and Existing waste sites county wide**
- 2. Development on Existing waste facilities only – countywide**
- 3. Development on Industrial Estates/ Brownfield land and Existing waste sites in towns over 6000 population**
- 4. Development on Industrial Estates/ Brownfield land and Existing waste sites in and around towns over 6000 population**
- 5. Development of larger facilities in and around towns over 20000 population and smaller ones in towns of 6000 population.**

Group Discussion

5 Spatial Options

Spatial Option 1

(C) Crown Copyright. All rights reserved.
Warwickshire County Council, 100019520,
2010.



Key

Existing waste sites:

- | | |
|---|--|
| ▲ Biomass plant & anaerobic digestion | ⊕ Non-hazardous landfill |
| ⊕ Composting | ⊕ Non-hazardous landfill and MRF |
| + HWRC | ☆ Scrap metals |
| ⊕ HWRC and waste transfer station | ★ Sewage treatment |
| ◆ Hazardous landfill | ◇ Thermal treatment |
| ⊙ Hazardous waste transfer | × Waste separation and depacking |
| ⊙ Inert landfill | ● Waste transfer station |
| ⚙ Mechanical Biological Treatment (MBT) plant | △ Industrial areas (predominantly B1/B2/B8 uses) |
| ○ Materials Recovery Facility (MRF) | □ Warwickshire district boundaries |
| ● MRF and waste transfer station | |

Option 1

Develop new facilities County wide on industrial estates, brownfield industrial land and existing waste management facilities.

Spatial Option 2

(C) Crown Copyright. All rights reserved.
Warwickshire County Council, 100019520,
2010.



Key

Existing waste sites:

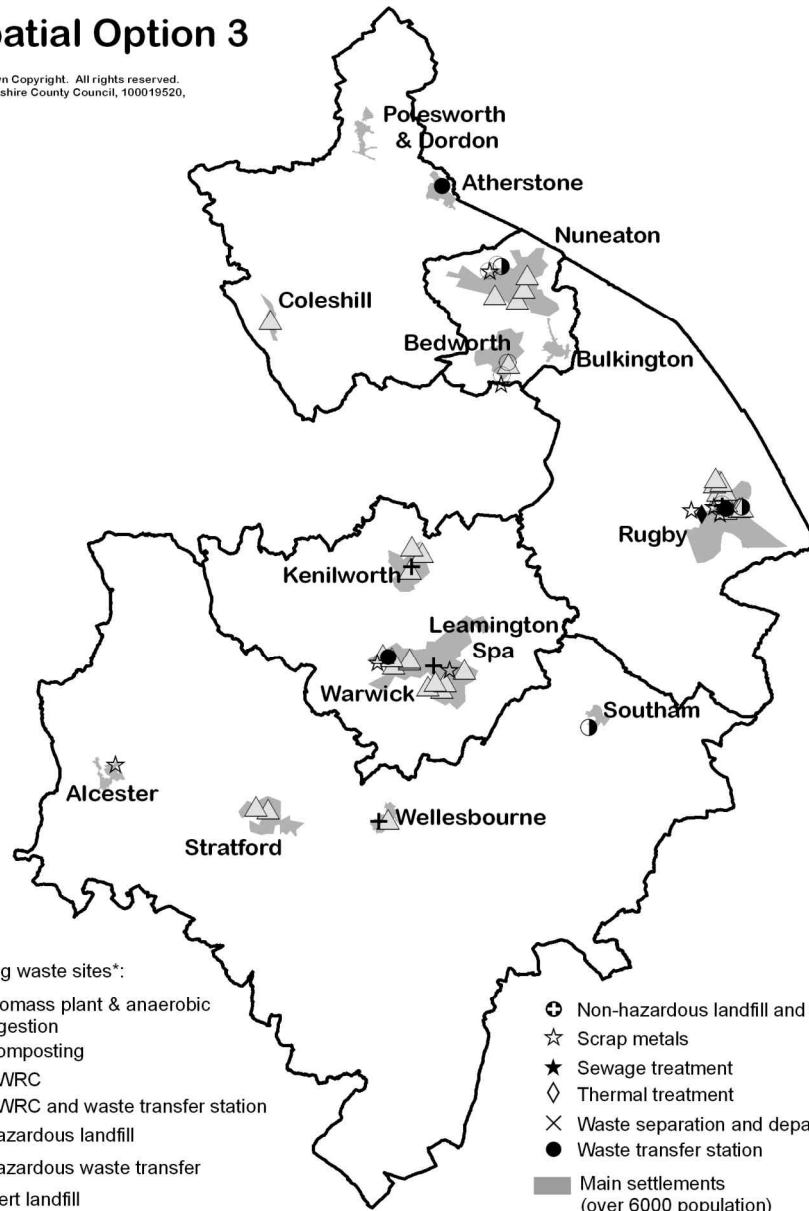
- | | |
|--|-------------------------------------|
| ▲ Biomass plant & anaerobic digestion | ⊕ Non-hazardous landfill and MRF |
| ⊕ Composting | ☆ Scrap metals |
| + HWRC | ★ Sewage treatment |
| ⊕ HWRC and waste transfer station | ◇ Thermal treatment |
| ◆ Hazardous landfill | × Waste separation and depacking |
| ⊙ Hazardous waste transfer | ● Waste transfer station |
| ⊛ Inert landfill | ○ Materials Recovery Facility (MRF) |
| ♻️ Mechanical Biological Treatment (MBT) plant | ◐ MRF and waste transfer station |
| ○ Materials Recovery Facility (MRF) | □ Warwickshire district boundaries |
| ◐ MRF and waste transfer station | |

Option 2

Develop new facilities County wide on existing waste management facilities only.

Spatial Option 3

(C) Crown Copyright. All rights reserved.
Warwickshire County Council, 100019520,
2010.



Key

Existing waste sites*:

- | | |
|---|---|
| ▲ Biomass plant & anaerobic digestion | ⊕ Non-hazardous landfill and MRF |
| ⊕ Composting | ☆ Scrap metals |
| + HWRC | ★ Sewage treatment |
| ⊕ HWRC and waste transfer station | ◇ Thermal treatment |
| ◆ Hazardous landfill | × Waste separation and depacking |
| ⊙ Hazardous waste transfer | ● Waste transfer station |
| ⊕ Inert landfill | ■ Main settlements (over 6000 population) |
| ⊕ Mechanical Biological Treatment (MBT) plant | □ Warwickshire district boundaries |
| ○ Materials Recovery Facility (MRF) | ▲ Industrial areas (predominantly B1/B2/B8 uses)* |
| ● MRF and waste transfer station | |
| ⊕ Non-hazardous landfill | |

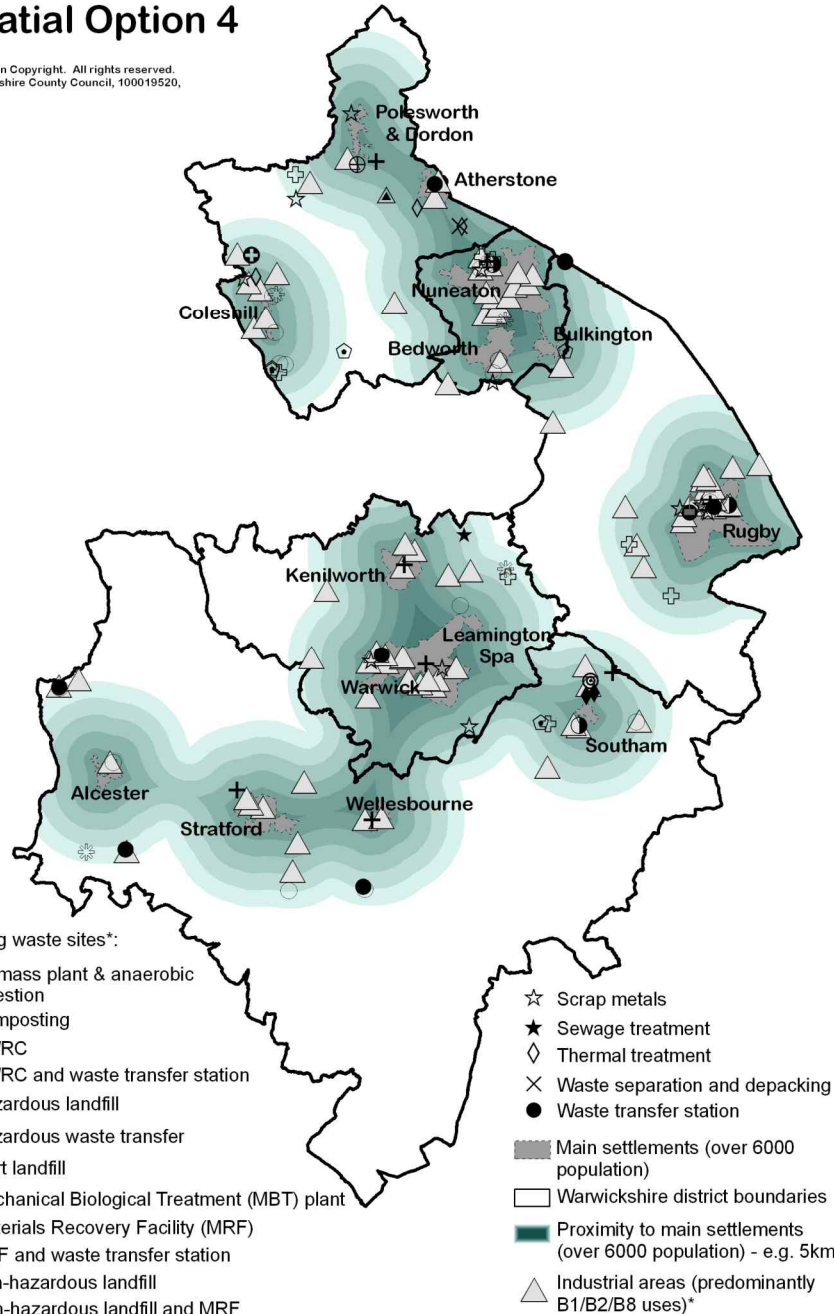
Option 3

Develop new facilities on industrial estates, brownfield industrial land and existing waste management facilities within the main settlements of over 6000 population within Warwickshire:

i.e. Alcester, Atherstone, Bedworth, Bulkington, Coleshill, Kenilworth, Leamington Spa, Nuneaton, Polesworth and Dordon, Rugby, Southam, Stratford, Warwick and Wellesbourne.

Spatial Option 4

(C) Crown Copyright. All rights reserved.
Warwickshire County Council, 100019520,
2010.



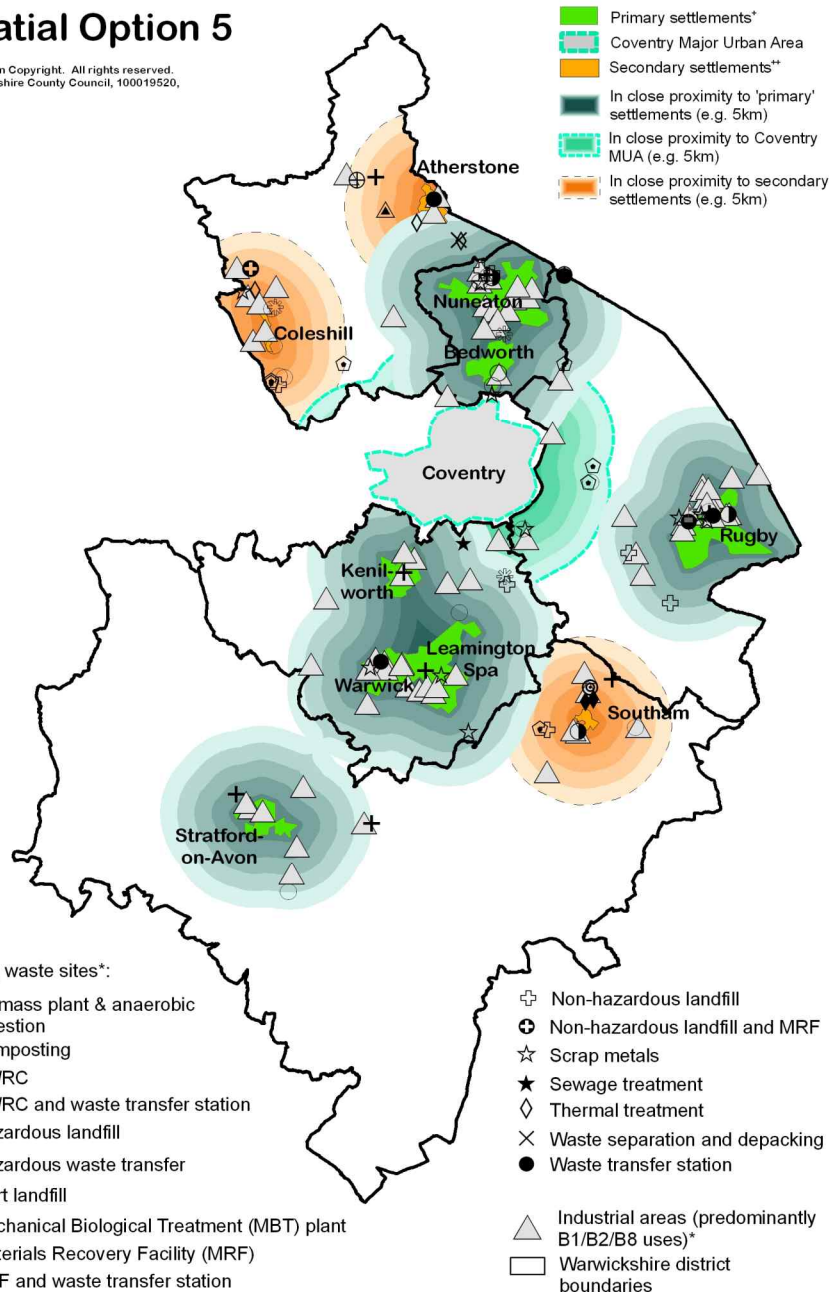
Option 4

Develop new facilities on industrial estates, brownfield industrial land and existing waste management facilities within, or in close proximity to the main settlements of over 6,000 population

i.e. Alcester, Atherstone, Bedworth, Bulkington, Coleshill, Kenilworth, Leamington Spa, Nuneaton, Polesworth and Dordon, Rugby, Southam, Stratford-upon-Avon, Warwick and Wellesbourne.

Spatial Option 5

(C) Crown Copyright. All rights reserved.
Warwickshire County Council, 100019520,
2010.



Option 5

A 'settlement hierarchy' option based on areas of higher population and/or existing waste management capacity

i.e. Develop facilities on industrial estates, brownfield industrial land and existing waste management facilities within the following locations:

i. priority given to within and/or in close proximity to the 'primary' settlements of Nuneaton, Rugby, Leamington Spa, Bedworth, Warwick, Stratford-upon-Avon and Kenilworth; or within 5km of the Coventry Major Urban Area (MUA); or

ii. within and/or in close proximity to the 'secondary' settlements of Atherstone, Coleshill and Southam where it is demonstrated that the development provides significant transport, operational and environmental benefits; or

iii) sites outside primary and secondary settlements where specific types of waste development might be acceptable where there are no unacceptable adverse environmental effects.

Treatment Gap



Treatment Gap

- Since 2007, there have been numerous planning permissions granted for treating municipal and C&I waste
- Evidence suggests that there is sufficient deliverable capacity to meet the 600,000tpa treatment gap identified in RSS

Treatment Gap

(tonnes)

- Anaerobic Digestion – 45,000
- Materials recovery – 99,000 (60,000)
- Mechanical Biological treatment – 300,000
- In Vessel Composting – 90,000
- Windrow Composting - 1,500
- Combined Heat and Power - 40,000
- Other – 85,000

‘Strategic’ sites

- PPS12 outlines that Core Strategies may allocate ‘strategic’ sites for development
- *“These should be those sites that are considered central to the achievement of the strategy”* (PPS12, p. 8)
- If sites are not identified in the Core Strategy, there may still be a need to set out what a ‘strategic’ waste management facility is so that there is an appropriate framework for assessing such proposals

Group discussion

Definition of a 'strategic' site in consultation document:

Strategic sites will be those that:

- *contribute significantly to meeting the treatment gap for Commercial and Industrial and Municipal waste streams to reduce the amount of residual waste disposed to landfill; and*
- *have the capacity to provide more than a local function i.e. Countywide/sub-regional/regional; and*
- *are close to major population centres with good transport links*

Do you agree?

Group discussion

Will broad locations and final policies in the Core Strategy be sufficient?

Is a Site Allocations document required?

Consultation

- 8 Week timescale – accommodate local elections / Census
- Districts / Boroughs / Parishes Statutory Consultees / Other adjoining Authorities/ Local Groups/ Previous Consultees/ Industry/ Quangos
- Waste Forum with industry / Library Drop-Ins / Locality and Area Forums when requested where resources available.
- Different formats: Hard copies / CD's / Online
- Respond through the Consultation Database on web site, email, letter, questionnaire.

Next Stages

- March 2011 – Emerging Spatial Options Consultation.
- August 2011 – Preferred Spatial Option with Policies Consultation.
- December 2011 - Publication Consultation.
- March 2012 – Submission
- 14 Weeks after submission – Examination in Public
- November 2012 - Adoption

Thank you for your attendance.