

# Warwickshire Waste Partnership Conference

Shire Hall, Wednesday 11th November, 2009

## Waste - what have we achieved and where we are going?

Martin Stott, Head of Environment and Resources,  
Warwickshire County Council



 recycle for Warwickshire

# Progress So Far

## Home composting

- Over 20,000 compost bins sold since 2005
- 17% households composting
- Estimated saving 3,950 tonnes of waste
- 19 Master Composters trained and active
- Over 100 community events attended



# Schools Recycling

- 87.5% of schools participated in a recycling service in the past year
- 190 out of 248 Warwickshire Schools have compost bins
- Green Cone trial implemented in 9 primary schools
- 5 secondary schools on board with the in-vessel composting project, enabling food waste to be dealt with on site



# Love Food Hate Waste

- £75,000 funding secured from WRAP to run an awareness campaign
- Aim to increase the percentage of committed food waste reducers by 10% (from a base of 19%), by March 2010



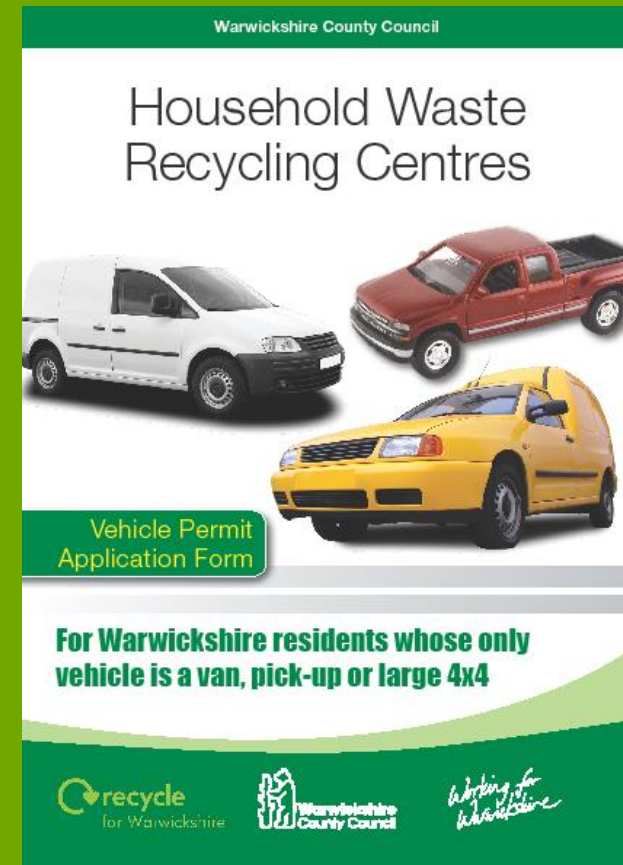
# Recycling and Reuse

- Hunters Lane HWRC in Rugby short-listed as HWRC of the Year in the LetsRecycle.com Awards, for Excellence in Recycling
- Average recycling and composting rate of 71.8% has been achieved at Hunters Lane to date



# Revised Vehicle Restriction Policy

- Fewer complaints and challenges to policy
- Improved public perception and buy-in for reduce, reuse, recycle initiatives
- Maintain control of unlawful trade waste input and associated costs, taxes etc
- Streamlined application process results in improved customer service



# Improvements to Kerbside Schemes

- Stratford District Council introduced alternate weekly collections in April 2009
- Rugby Borough Council introduced alternate weekly collections in April 2009
- Warwick District Council, Stratford District Council and Rugby Borough Council now collect food waste at the kerbside



# Partnership Achievements in 2008/09

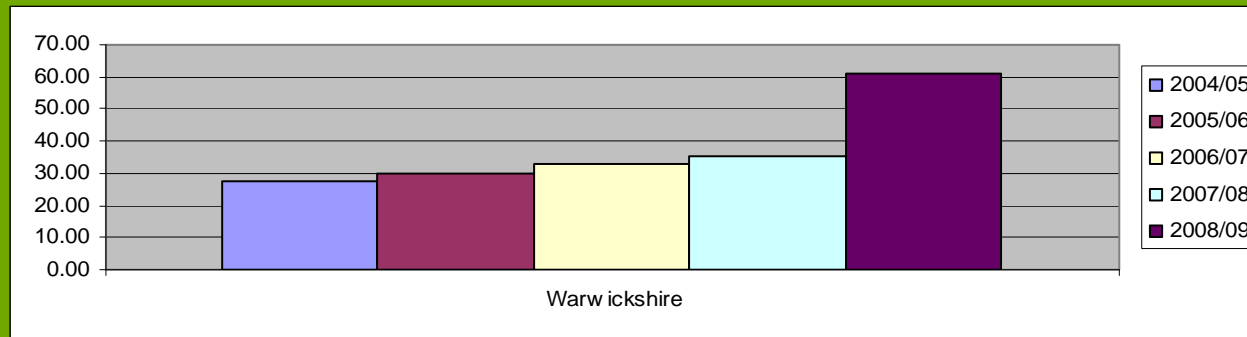
- Overall recycling and composting rate of over 43%
- Reduction in total household waste of 2.23% compared to 2007/08
- Warwick District had the lowest kilograms per head at 372 with North Warwickshire having the highest at 483
- Warwick achieved the highest composting and recycling rate of 52% (up from 30%) followed by Stratford at 47%
- Total recycling, composting and reuse increased by over 19,000 tonnes to 118,838

# Warwickshire's Waste Success

- Ufton IVC now operational – capacity for 40,000 tonnes per annum
- Warwickshire has shown more improvement in the last year than any other local authority area in Britain, when it comes to recycling and composting
- In some areas Warwickshire is hitting targets now that the Government had set for 2020 – a decade early
- Local Area Agreement (LAA) targets have been exceeded – revised targets to be set

# Recycling and composting progress so far

We have been steadily increasing the amount of waste recycled and composted, having almost met the countywide target of recycling 40-45% of our waste by 2010



# How do we plan to improve performance?

- Encourage increased public participation in existing schemes
  - *Targetted campaigns WRAP support*
  - *Love Food Hate Waste*
- Development of a Countywide, generic education campaign
- Increasing the types of materials that can be collected from the kerbside
  - *Food waste*
  - *Cardboard and plastic*
- Investigating methods for improving recycling that are not just reliant on changing collection frequency

# How do we plan to improve performance?

- Improve Recycling in Flats
- Green Bin Amnesty - *Nuneaton & Bedworth Borough Council*
- Plastic Bottle Bring Banks – *North Warwickshire Borough Council*
- Making improvements to household waste recycling centres
  - *Lower House Farm New Development 2011*
  - *Judkins HWRC 2010 – upgrading of site*
  - *Vehicle Counting at HWRCs*
    - *Ability to adjust opening hours in line with measured demand*
    - *Compliments and reinforces consultation exercises*
    - *Cost-effective – automatic counting of users*

# Residual Waste Treatment - Progress

- We are continuing to work in partnership with neighbouring authorities to develop sub-regional residual waste treatment facilities.
- We are focussing on two key projects:
  - *Project Transform*
  - *Project W2R*



# Waste 2 Resource

- Staffordshire County Council leading the project
- Warwickshire County Council, Sandwell MBC and Walsall MBC will be sending residual waste to the facility
- Project has been awarded £122.4 million PFI Credits
- Development of a 300,000 tonne Energy from Waste facility located in Staffordshire
- Planning application for proposed site obtained in April 2009 for the Four Ashes site
- Joint HWRC for North Warwickshire BC and Tamworth BC at Lower House Farm
- Joint transfer station for Nuneaton and Bedworth BC, North Warwickshire BC and Tamworth BC to support the W2R energy from waste at Lower House Farm
- Facility operational in 2013



# Project Transform

- Memorandum of Understanding has been agreed between the WDA and WCA's outlining
  - Aspiration to increase levels of recycling
  - Operational aspects of delivering waste to the new treatment facility
- Ongoing commitment of all Partners to increase levels of recycling and participation in scheme
- Warwickshire relies heavily on landfill – the project will
  - reduce reliance on landfill
  - meet landfill diversion targets



# In summary.....

- We are committed to minimising the amount of waste produced in Warwickshire
- We will support the residents of Warwickshire providing services and tools to enable them to make a difference and reduce the amount of waste they produce
- We are steadily increasing recycling and composting but there is room for improvement
- We have identified areas for improvement and are committed to enhancing our performance
- We have an agreed long-term approach for diverting waste away from landfill and investment in alternatives

# Thank you

Martin Stott,  
Warwickshire County Council

[martinstott@warwickshire.gov.uk](mailto:martinstott@warwickshire.gov.uk)

[www.warwickshire.gov.uk/recycleworks](http://www.warwickshire.gov.uk/recycleworks)

 recycle for Warwickshire